


WAAS CH <b>97512</b> <b>W32A</b>	APP CRS <b>324°</b>	Rwy Idg TDZE Apt Elev	<b>5498</b> <b>715</b> <b>726</b>
--	------------------------	-----------------------------	---

# RNAV (GPS) RWY 32

WINCHESTER RGNL (OKV)

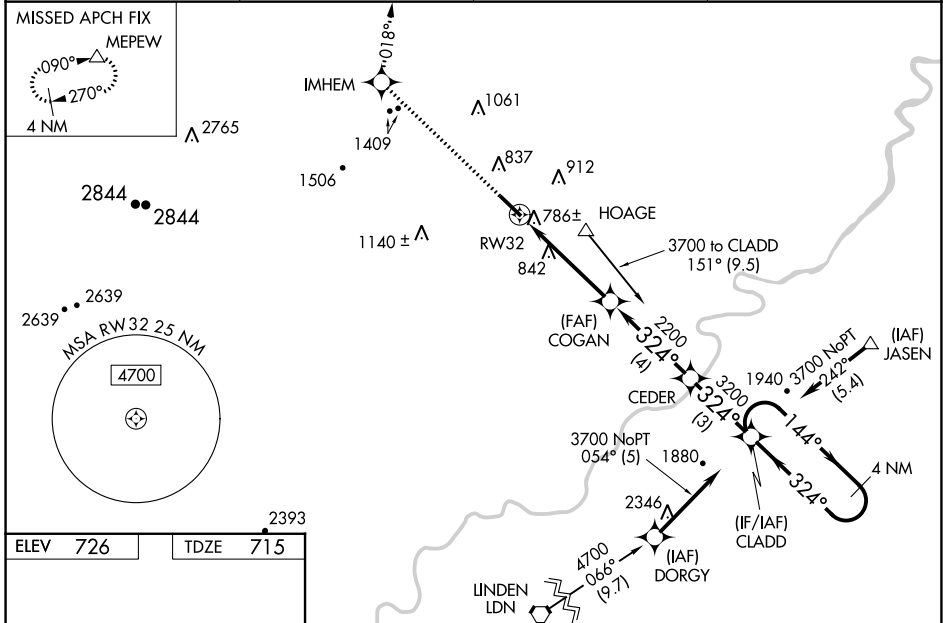
**RNP APCH.**

**▼** Baro-VNAV NA when using Martinsburg altimeter setting. For uncompensated Baro-VNAV systems, LNAV/VNAV NA below -16°C or above 47°C.  
**▲** Rwy 32 helicopter visibility reduction below 3/4 SM NA. When local altimeter setting not received, use Martinsburg altimeter setting and increase all DA 63 feet and all MDA 80 feet, and LNAV/VNAV all Cats and Circling Cat C visibility 1/4 mile. For inoperative MALSR, increase LNAV Cats A, B and C visibility to 1 mile and LNAV Cat D visibility to 1 1/4 mile. Inoperative table does not apply to LPV. For inoperative MALSR when using Martinsburg altimeter setting, increase LPV all Cats and LNAV Cats A and B visibility to 1 mile. VDP NA when using Martinsburg altimeter setting.

**MALSR**  


**MISSED APPROACH:**  
 Climb to 5000 direct IMHEM and via track 018° to MEPEW and hold, continue climb-in-hold to 5000.

<b>AWOS-3</b> <b>124.85</b>	<b>POTOMAC APP CON</b> <b>120.45 306.925</b>	<b>CLNC DEL</b> <b>126.15</b>	<b>UNICOM</b> <b>122.975 (CTAF) ①</b>
--------------------------------	---	----------------------------------	--



5000	IMHEM	tr 018°	MEPEW	4 NM Holding Pattern
*LNAV only		*1.1 NM to RW32	COGAN	CEDER
RW32		1.1	3.4 NM	4 NM
324°		3200	324°	3700
1.1		3.4 NM	4 NM	3 NM
CATEGORY	A	B	C	D
LPV DA	915-3/4 200 (200-3/4)			
LNAV/VNAV DA	1056-3/4 341 (400-3/4)			
LNAV MDA	1100-3/4 385 (400-3/4)		1100-1 385 (400-1)	
<b>CIRCLING</b>	1180-1 454 (500-1)	1220-1 494 (500-1)	1380-1 3/4 654 (700-1 3/4)	1480-2 1/2 754 (800-2 1/2)

GP 3.00° TCH 44

NE-3, 26 JAN 2023 to 23 FEB 2023

NE-3, 26 JAN 2023 to 23 FEB 2023