

LOC/DME I-TZX 109.55 Chan 32 (Y)	APP CRS 324°	Rwy Idg TDZE Apt Elev	5498 715 726
--	------------------------	-----------------------------	---

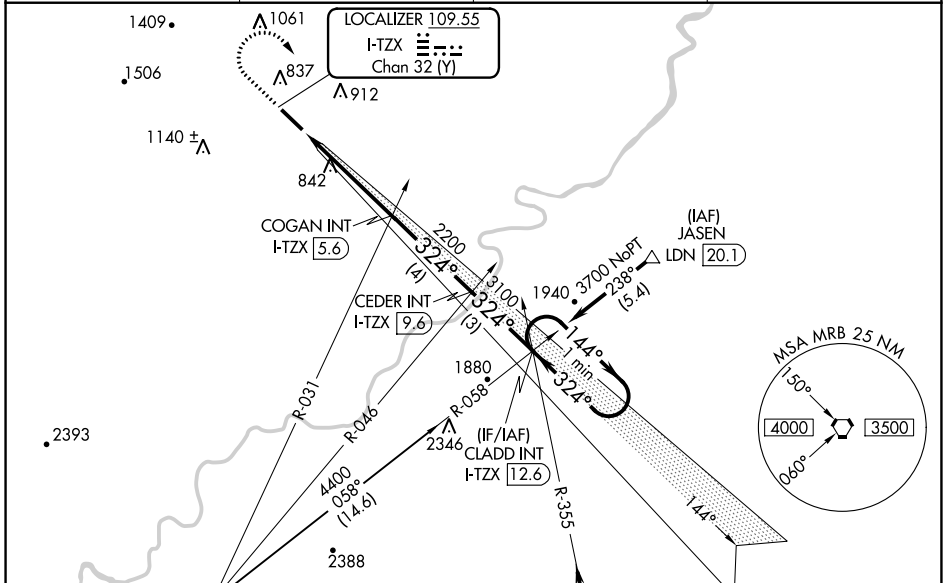
ILS or LOC RWY 32

WINCHESTER RGNL (OKV)

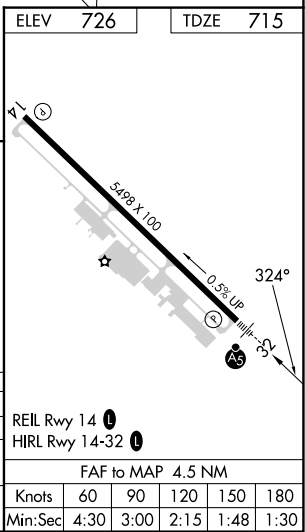
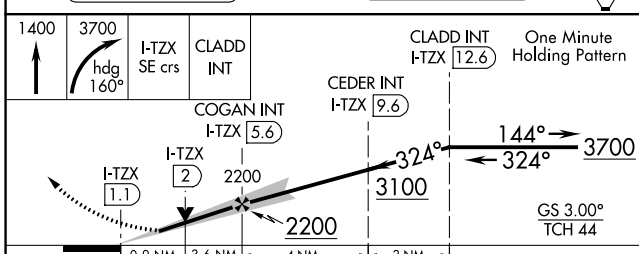
NA Rwy 32 helicopter visibility reduction below 3/4 SM NA. When local altimeter setting not received, use Martinsburg altimeter setting and increase all DA 63 feet and all MDA 80 feet and Circling Cat C visibility 1/4 mile. For inoperative MALSRS, increase S-LOC 32 Cat C visibility to 1 mile. For inoperative MALSRS when using Martinsburg altimeter setting, increase S-ILS 32 All Cats visibility 1/2 mile. VDP NA when using Martinsburg altimeter setting.

MALSRS MISSED APPROACH: Climb to 1400 then climbing right turn to 3700 via heading 160° and I-TZX SE course to CLADD INT/I-TZX 12.6 DME and hold.

AWOS-3 124.85	POTOMAC APP CON 120.45 306.925	CLNC DEL 126.15	UNICOM 122.975 (CTAF)
-------------------------	--	---------------------------	---------------------------------



ELEV 726	TDZE 715
----------	----------



CATEGORY	A	B	C	D
S-ILS 32		915-1/2	200 (200-1/2)	
S-LOC 32	1040-1/2	325 (400-1/2)		1040-3/4 325 (400-3/4)
CIRCLING	1180-1 454 (500-1)	1220-1 494 (500-1)	1380-1 3/4 654 (700-1 3/4)	1480-2 1/2 754 (800-2 1/2)

Knots	60	90	120	150	180
Min:Sec	4:30	3:00	2:15	1:48	1:30

NE-3, 31 OCT 2024 to 28 NOV 2024

NE-3, 31 OCT 2024 to 28 NOV 2024