

|  |                        |   |
|--|------------------------|---|
| WAAS<br>CH <b>69623</b><br><b>W27A</b> | APP CRS<br><b>270°</b> | Rwy Idg <b>4271</b><br>TDZE <b>239</b><br>Apt Elev <b>246</b> |
|--|------------------------|---|

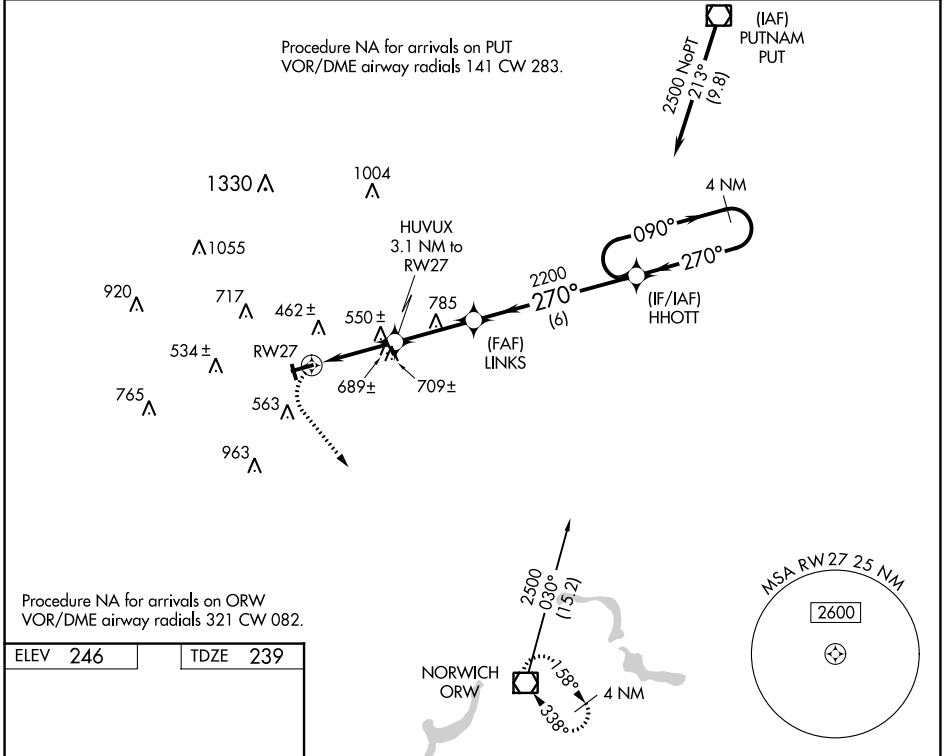
# RNAV (GPS) RWY 27

WINDHAM (IJD)

**▼** Procedure NA at night. DME/DME RNP-0.3 NA. Rwy 27 helicopter visibility reduction below 1 SM NA. When local altimeter setting not received, use Windsor Locks altimeter setting and increase all MDA 80 feet, increase LP and LNAV Cat B and Circling Cats A/B visibility 1/4 SM, increase LP, LNAV and Circling Cat C visibility 1/2 SM.

**▲** MISSED APPROACH: Climbing left turn to 2600 direct ORW VOR/DME and hold.

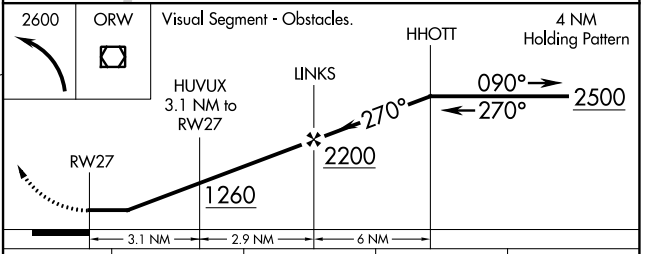
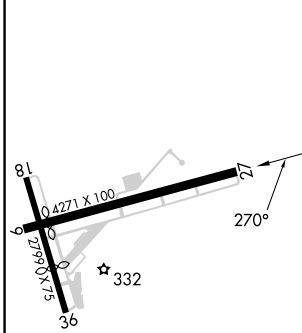
|                        |   |                          |  |
|------------------------|---|--------------------------|--|
| ASOS<br><b>133.675</b> | BRADLEY APP CON<br><b>127.8 269.325</b> | CLNC DEL<br><b>128.6</b> | UNICOM<br><b>122.975</b> (CTAF) <b>0</b> |
|------------------------|---|--------------------------|--|



NE-1, 31 OCT 2024 to 28 NOV 2024

NE-1, 31 OCT 2024 to 28 NOV 2024

|                 |                 |
|-----------------|-----------------|
| ELEV <b>246</b> | TDZE <b>239</b> |
|-----------------|-----------------|



| CATEGORY | A     | B           | C                             | D  |
|----------|-------|-------------|-------------------------------|----|
| LP MDA   | 940-1 | 701 (700-1) | 940-2<br>701 (700-2)          | NA |
| LNAV MDA | 960-1 | 721 (800-1) | 960-2<br>721 (800-2)          | NA |
| CIRCLING | 980-1 | 734 (800-1) | 1120-2 1/2<br>874 (900-2 1/2) | NA |