

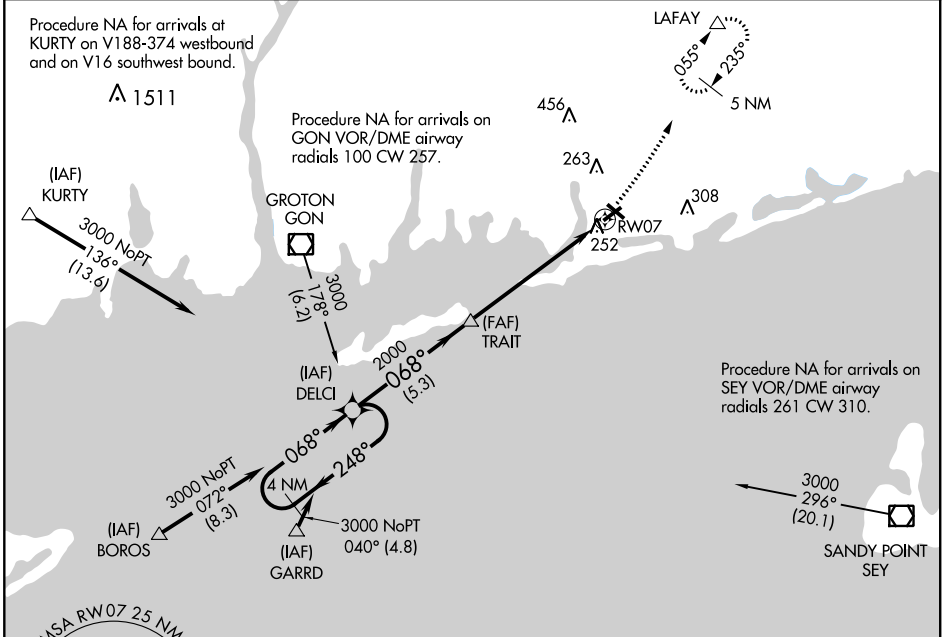
APP CRS 068°	Rwy Idg TDZE Apt Elev	4010 76 81
------------------------	-----------------------------	---------------------------------------

RNAV (GPS) RWY 7

WESTERLY STATE (WST)

▼ Inoperative table does not apply. DME/DME RNP-0.3 NA. ▲ NA	MALSF	MISSED APPROACH: Climbing left turn to 2100 direct LAFAY and hold.
---	-------	--

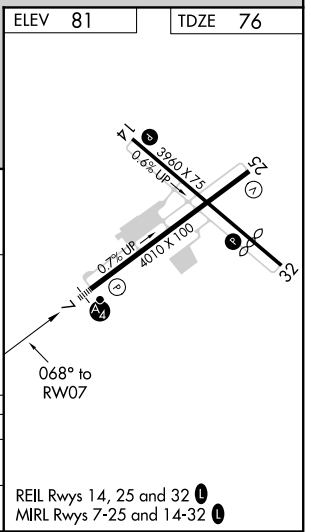
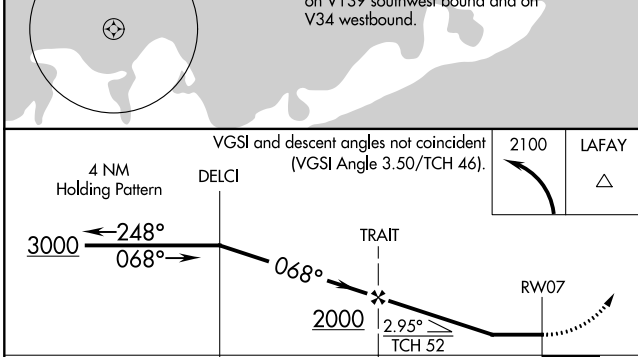
ASOS 132.375	PROVIDENCE APP CON ★ 119.45 319.2	UNICOM 123.0 (CTAF) 0
------------------------	---	---------------------------------



NE-1, 02 DEC 2021 to 30 DEC 2021

NE-1, 02 DEC 2021 to 30 DEC 2021

ELEV 81	TDZE 76
---------	---------



CATEGORY	A	B	C	D
LNVA MDA	520-1 444 (500-1)		520-1¼ 444 (500-1¼)	520-1½ 444 (500-1½)
CIRCLING	580-1 499 (500-1)		720-1¾ 639 (700-1¾)	760-2¼ 679 (700-2¼)