

WAAS CH <b>53713</b> <b>W25A</b>	APP CRS <b>247°</b>	Rwy Idg TDZE Apt Elev	<b>5600</b> <b>3773</b> <b>3793</b>
--	------------------------	-----------------------------	---

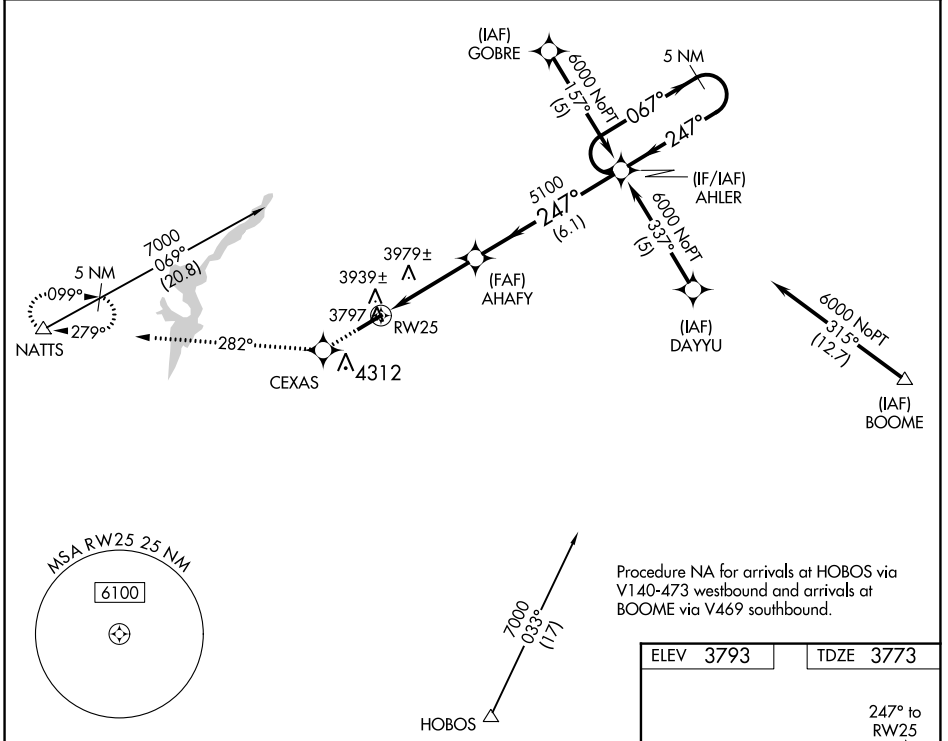
# RNAV (GPS) RWY 25

INGALLS FLD (HSP)

**▼** Circling NA SE of Rwy 7-25. Baro-VNAV NA.  
**▲** DME/DME RNP-0.3 NA.  
 When local altimeter setting not received, procedure NA.

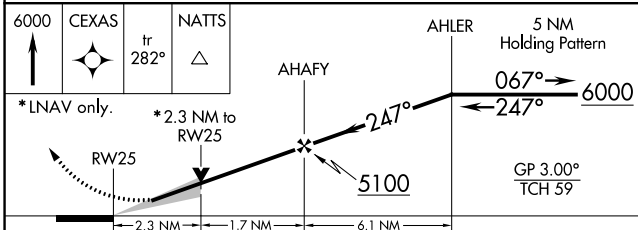
MISSED APPROACH: Climb to 6000 direct CEXAS and via track 282° to NATTS and hold.

AWOS-3 <b>118.8</b>	WASHINGTON CENTER <b>134.4 353.9</b>	UNICOM <b>123.0 (CTAF) 0</b>
------------------------	---	---------------------------------



NE-3, 03 OCT 2024 to 31 OCT 2024

NE-3, 03 OCT 2024 to 31 OCT 2024



6000	CEXAS	NATTS		
↑	fr 282°	△		
* LNAV only.				
RW25		* 2.3 NM to RW25		
2.3 NM		1.7 NM		6.1 NM
CATEGORY	A	B	C	D
LPV DA	4164-1¼		391 (400-1¼)	
LNAV/VNAV DA	4309-2		536 (600-2)	
LNAV MDA	4560-1 787 (800-1)	4560-1¼ 787 (800-1¼)	4560-2¼ 787 (800-2¼)	4560-2½ 787 (800-2½)
<b>C</b> CIRCLING	4560-1 767 (800-1)	4560-1¼ 767 (800-1¼)	4560-2¼ 767 (800-2¼)	4560-2½ 767 (800-2½)

ELEV 3793	TDZE 3773
-----------	-----------

REIL Rwy 25 **0**  
 HIRL Rwy 7-25 **0**