

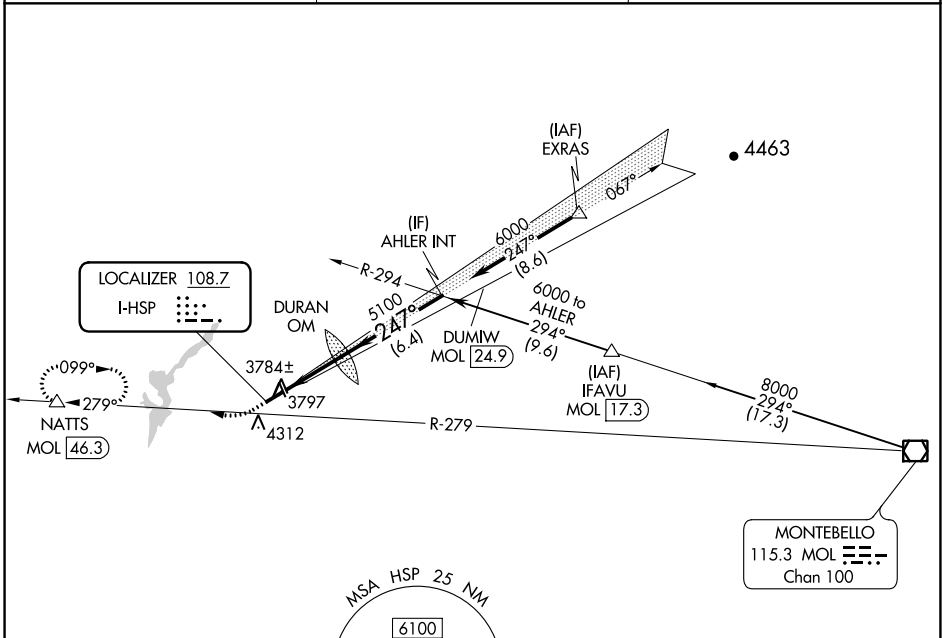
LOC I-HSP <b>108.7</b>	APP CRS <b>247°</b>	Rwy Idg <b>5600</b> TDZE <b>3773</b> Apt Elev <b>3793</b>
---------------------------	------------------------	---

# ILS or LOC RWY 25

INGALLS FLD (HSP)

DME required.	MISSED APPROACH: Climb to 4360, then climbing right turn to 6200 on heading 270° and MOL R-279 to NATTS/MOL 46.3 DME and hold. (DME required).
<p>▼ Circling to Rwy 7 NA at night.</p> <p>▲ NA Circling NA southeast of Rwy 7-25.</p>	

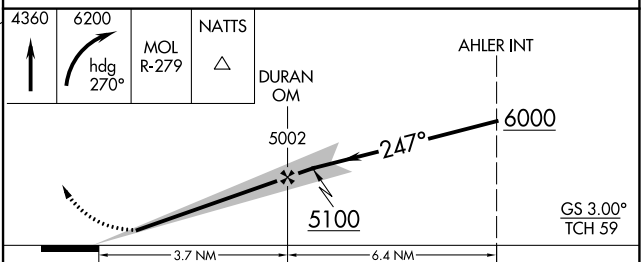
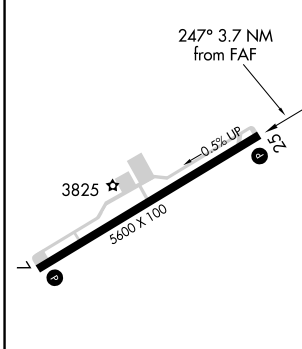
AWOS-3 <b>118.8</b>	WASHINGTON CENTER <b>134.4 353.9</b>	UNICOM <b>123.0 (CTAF) 0</b>
------------------------	---	---------------------------------



NE-3, 26 JAN 2023 to 23 FEB 2023

NE-3, 26 JAN 2023 to 23 FEB 2023

ELEV 3793	TDZE 3773
-----------	-----------



CATEGORY	A	B	C	D
S-ILS 25	4073-7/8		300 (300-7/8)	
S-LOC 25	4240-1 467 (500-1)		4240-1 3/8 467 (500-1 3/8)	
<input checked="" type="checkbox"/> CIRCLING	4440-1 647 (700-1)	4480-1 687 (700-1)	4480-1 1/2 687 (700-1 1/2)	4480-2 1/4 687 (700-2 1/4)

FAF to MAP 3.7 NM					
Knots	60	90	120	150	180
Min:Sec	3:42	2:28	1:51	1:29	1:14

HOT SPRINGS, VIRGINIA  
Amdt 5 15AUG19

37°57'N-79°50'W

# ILS or LOC RWY 25

INGALLS FLD (HSP)