

WAAS CH <b>42616</b> <b>W02A</b>	APP CRS <b>022°</b>	Rwy Idg TDZE <b>696</b> Apt Elev <b>699</b>	<b>3501</b>
--	------------------------	---	-------------

# RNAV (GPS) RWY 2

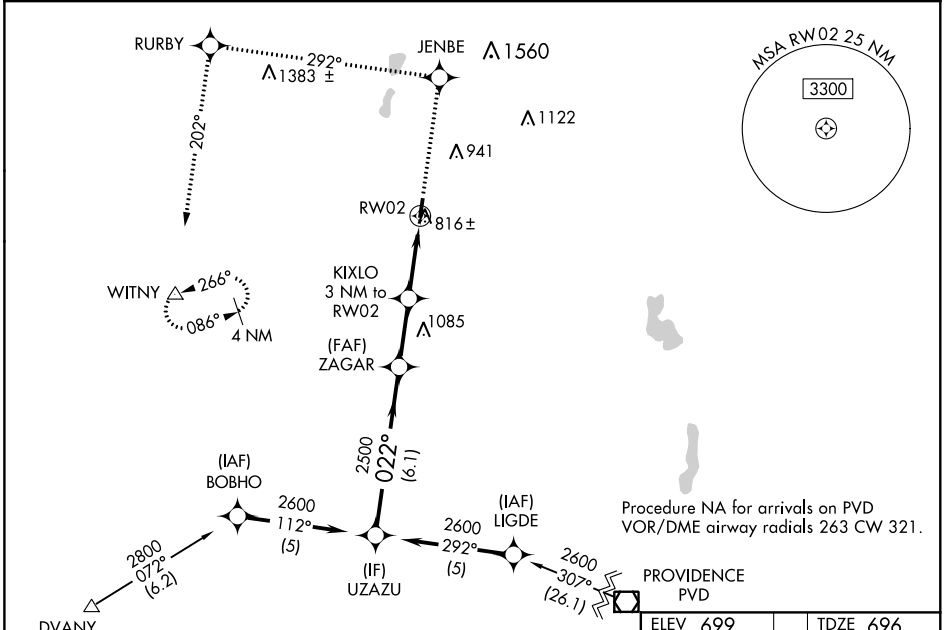
SOUTHBRIDGE MUNI (3B0)

**NA** DME/DME RNP-0.3 NA. Circling Rwy 20 NA at night.  
Use Worcester altimeter setting, when not received use Bradley Intl altimeter setting and increase all DA 72 feet and all MDAs 80 feet, increase LPV all Cats and LNAV Cat C visibility 1/2 SM, and Circling Cat C visibility 1/2 SM.

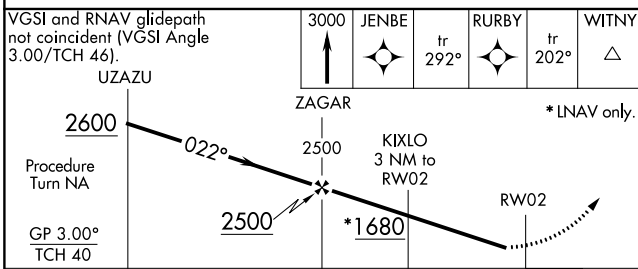
**MISSED APPROACH:** Climb to 3000 direct JENBE and via track 292° to RURBY and via track 202° to WITNY and hold.

YANKEE APP CON  
**119.0 327.1**

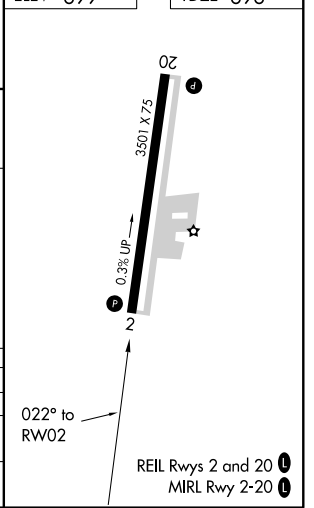
UNICOM  
**122.8 (CTAF)**



ELEV 699	TDZE 696
----------	----------



CATEGORY	A	B	C	D
LPV DA	1018-1 1/4	322 (400-1 1/4)		NA
LNAV MDA	1300-1 604 (700-1)		1300-1 1/4 604 (700-1 1/4)	NA
<b>C</b> CIRCLING	1360-1 661 (700-1)		1360-1 1/4 661 (700-1 1/4)	NA



NE-1, 09 SEP 2021 to 07 OCT 2021

NE-1, 09 SEP 2021 to 07 OCT 2021