

WAAS CH 70526 W05A	APP CRS 054°	Rwy Idg 5502 TDZE 455 Apt Elev 459
--	------------------------	---

RNAV (GPS) RWY 5

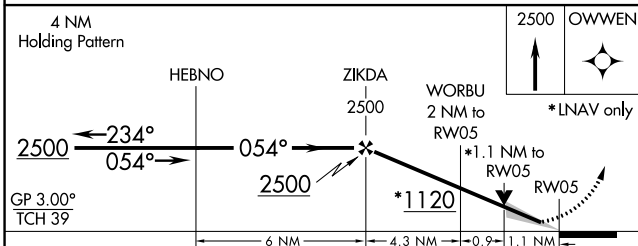
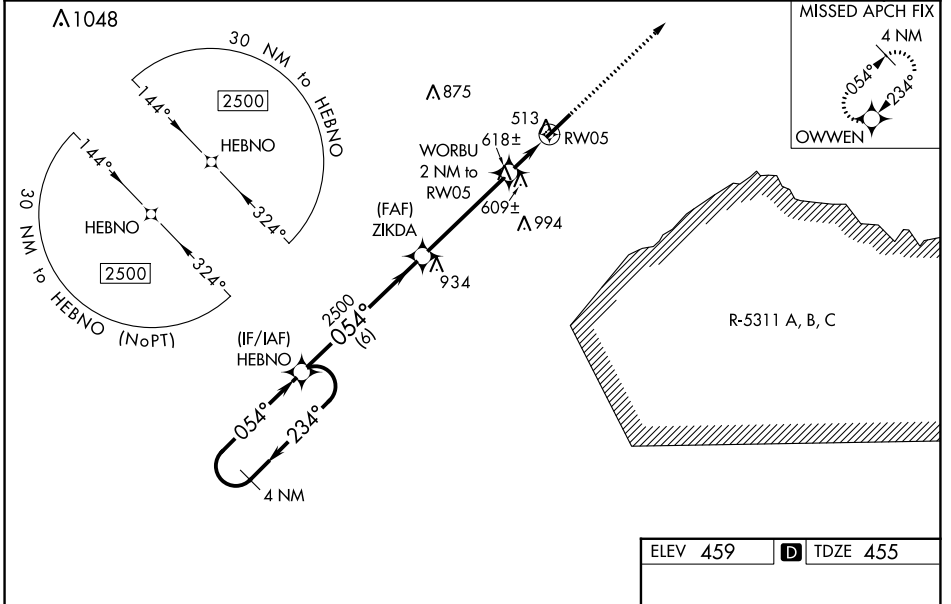
MOORE COUNTY (SOP)

⚠ For uncompensated Baro-VNAV systems, LNAV/VNAV NA below -15°C (5°F) or above 54°C (130°F). DME/DME RNP-0.3 NA. For inop MALSR, increase LNAV/VNAV all Cats visibility to 7/8 mile, LNAV Cats A/B visibility to 1 mile and LNAV Cats C/D visibility to 1 1/8 mile. When local altimeter setting not received, use Sanford altimeter setting and increase all DA 88 feet and all MDA 100 feet, increase LNAV/VNAV all Cats visibility 1/8 mile, LNAV Cats C/D visibility 1/4 mile, and Circling Cat C 1/2 mile. When using Sanford altimeter setting, for inop MALSR increase LNAV/VNAV all Cats visibility to 1 1/8 mile, LNAV Cats A/B visibility to 1 mile, and LNAV Cat C/D visibility to 1 3/8 mile. Baro-VNAV and VDP NA when using Sanford altimeter setting.

MALSR

MISSED APPROACH:
Climb to 2500 direct OWWEN and hold.

AWOS-3PT 127.575	FAYETTEVILLE APP CON 127.8 343.725	CLNC DEL 127.0	UNICOM 123.05 (CTAF) 0
----------------------------	--	--------------------------	----------------------------------



ELEV 459 **D** TDZE 455

514

6503 X 150

0.4% UP TO 0.2% DOWN

054° to RWY 5

REIL Rwy 23 **0**

HIRL Rwy 5-23 **0**

CATEGORY	A	B	C	D
LPV DA	655-1/2		200 (200-1/2)	
LNAV/VNAV DA	750-1/2		295 (300-1/2)	
LNAV MDA	860-1/2		860-3/4	
	405 (500-1/2)		405 (500-3/4)	
C CIRCLING	880-1	920-1	1100-1 1/4	1360-3
	421 (500-1)	461 (500-1)	641 (700-1 3/4)	901 (1000-3)

SE-2, 03 OCT 2024 to 31 OCT 2024

SE-2, 03 OCT 2024 to 31 OCT 2024