

LOC I-LPA 109.7	APP CRS 310°	Rwy Idg TDZE Apt Elev	6701 1304 1304
---------------------------	------------------------	-----------------------------	---

ILS or LOC RWY 31

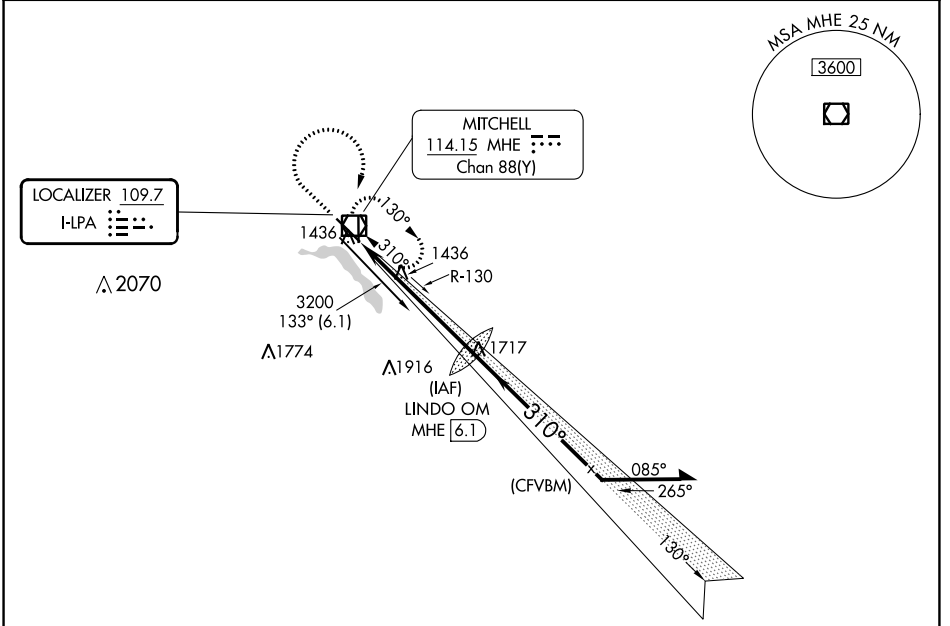
MITCHELL MUNI (MHE)

DME required.

NA Autopilot coupled approach NA below 2174 MSL.
For inop ALS, increase S-LOC 31 Cats C and D visibility to 1 1/8 SM.

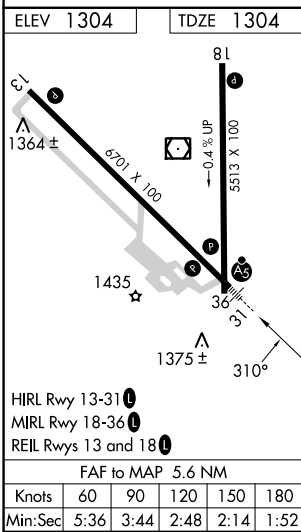
MALSR
MISSED APPROACH: Climb to 3200 then right turn direct MHE VOR/DME and hold.

ASOS 124.175	MINNEAPOLIS CENTER 126.25 339.8	UNICOM 122.8 (CTAF) 0
------------------------	---	---------------------------------



NC-1, 31 OCT 2024 to 28 NOV 2024

NC-1, 31 OCT 2024 to 28 NOV 2024



3200	MHE	LINDO OM MHE 6.1	VGSI and ILS glidepath not coincident (VGSI Angle 3.00/TCH 61)	
*LOC only.			3182	130°
	*MHE 1.6		310°	3200
			3200	GS 3.00° TCH 57
	-1.1 NM	4.5 NM		
CATEGORY	A	B	C	D
S-ILS 31	1554-1/2		250 (300-1/2)	
S-LOC 31	1700-1/2	396 (400-1/2)	1700-3/4	396 (400-3/4)
<input checked="" type="checkbox"/> CIRCLING	1740-1 436 (500-1)	1760-1 456 (500-1)	1820-1 1/2 516 (600-1 1/2)	1860-2 556 (600-2)