

WAAS CH 99638 W18A	APP CRS 184°	Rwy ldg TDZE Apt Elev	5941 791 808
--	------------------------	-----------------------------	---

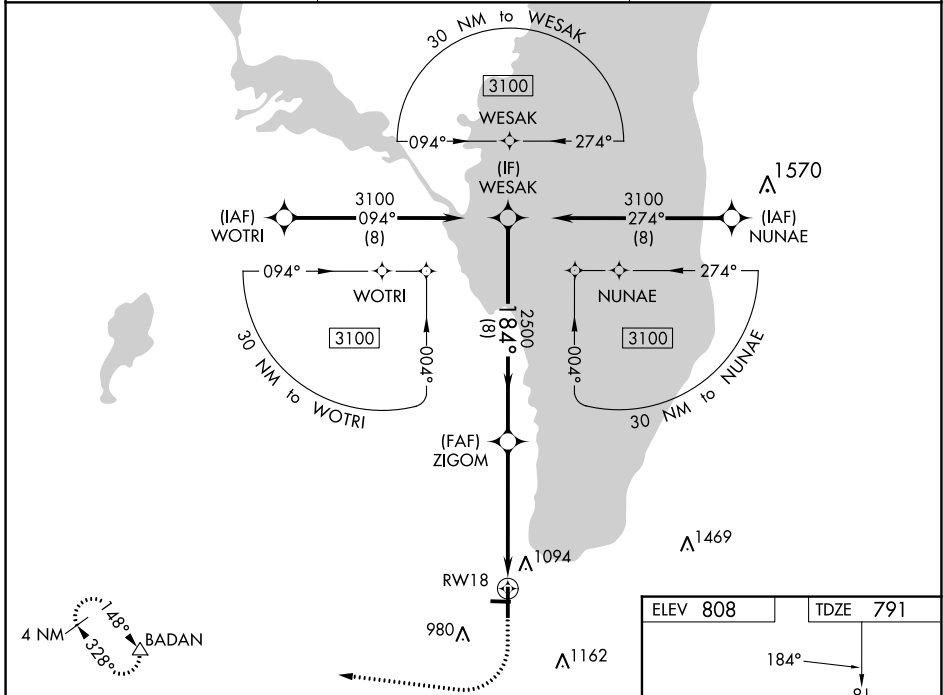
RNAV (GPS) RWY 18

FOND DU LAC COUNTY (F.L.D.)

⚠ Night landing: Rwy 9, 27 NA. Baro-VNAV NA when using Oshkosh altimeter setting. For uncompensated Baro-VNAV systems, LNAV/VNAV NA below -21°C (-5°F) or above 54°C (130°F). DME/DME RNP-0.3 NA. When local altimeter setting not received, use Oshkosh altimeter setting; increase LPV DA to 1072 feet and LNAV/VNAV DA to 1314 feet and all MDA 60 feet; increase LPV visibility all Cats, LNAV/VNAV visibility all Cats and LNAV Cat C/D visibility 1/8 mile; increase Circling Cat D visibility 1/4 mile.

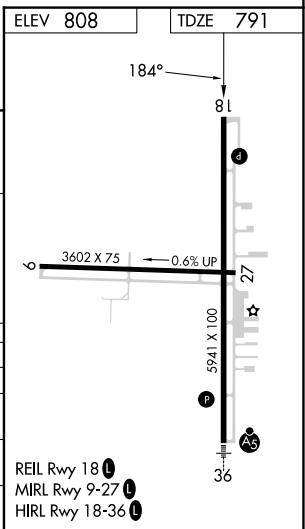
⚠ MISSED APPROACH: Climb to 1300 then climbing right turn 3000 direct BADAN and hold.

ASOS 134.0	MILWAUKEE APP CON 127.0 263.075	UNICOM 123.05 (CTAF) 0
----------------------	---	----------------------------------



VGSI and RNAV glidepath not coincident (VGSI Angle 3.00/TCH 35).

WESAK	ZIGOM	BADAN		
3100	2500	3000		
GP 3.00° TCH 45	*1.6 NM to RWY 18	*LNAV only		
8 NM	3.7 NM	1.6 NM		
CATEGORY	A	B	C	D
LPV DA	1041-7/8		250 (300-7/8)	
LNAV/VNAV DA	1283-13/4		492 (500-13/4)	
LNAV MDA	1320-1	529 (600-1)	1320-1 1/2	529 (600-1 1/2)
C CIRCLING	1400-1	592 (600-1)	1520-2	712 (800-2)
			1520-2 1/4	712 (800-2 1/4)



REIL Rwy 18 **0**
MIRL Rwy 9-27 **0**
HIRL Rwy 18-36 **0**

EC-3, 31 OCT 2024 to 28 NOV 2024

EC-3, 31 OCT 2024 to 28 NOV 2024