

LOC/DME I-MTN	APP CRS	Rwy Idg	6997
110.7	326°	TDZE	14
Chan 44		Apt Elev	22

ILS or LOC RWY 33

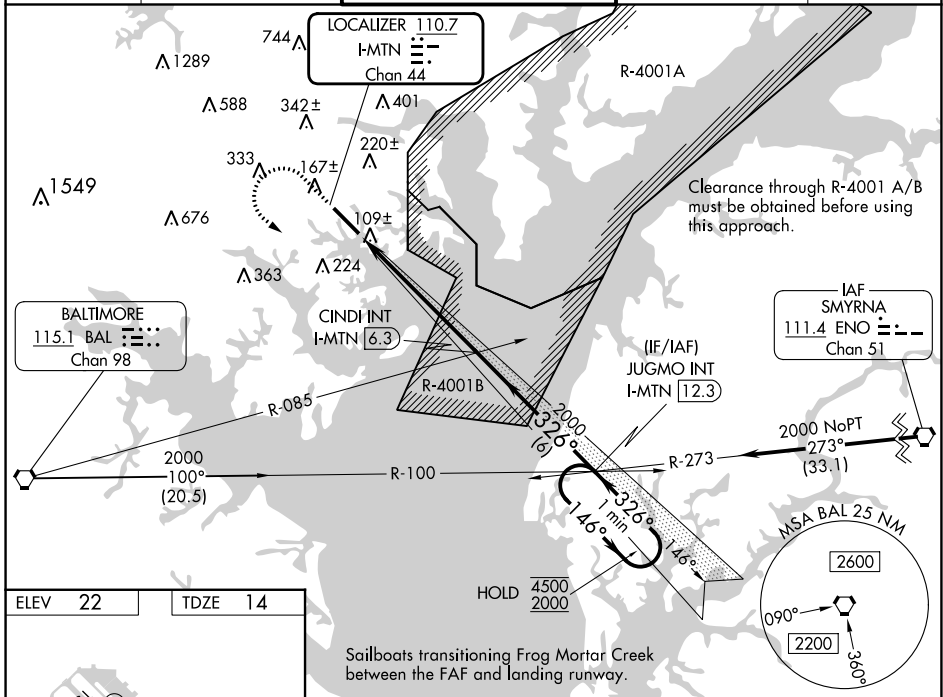
MARTIN STATE (MTN)

RADAR required.

⚠ Circling NA for Cat D northeast of Rwy 15-33. Rwy 33 helicopter visibility reduction below 3/4 SM NA. VDP NA when using Baltimore/Washington Intl Thurgood Marshall altimeter setting. When local altimeter setting not received, use Baltimore/Washington Intl Thurgood Marshall altimeter setting; increase S-ILS 33 DA to 266 feet; increase all MDAs 60 feet and S-LOC 33 visibility Cat C/D 1/4 SM, and Circling visibility Cat C/D 1/4 SM.

MISSED APPROACH: Climb to 800 then climbing left turn to 2000 on heading 146° and on BAL VORTAC R-100 to JUGMO INT/I-MTN 12.3 DME and hold.

ATIS 124.925	POTOMAC APP CON 119.0 282.275	MARTIN TOWER ★ 121.3(CTAF) 254.425	GND CON 121.8 253.4	UNICOM 122.95
------------------------	---	--	-------------------------------	-------------------------

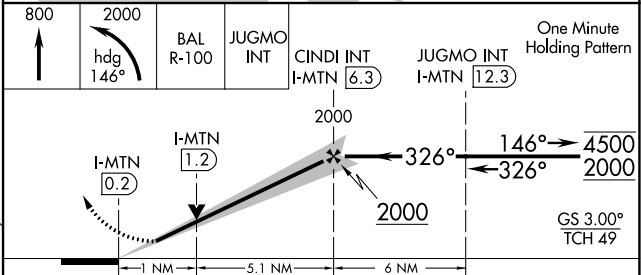


ELEV	22	TDZE	14
------	----	------	----

HIRL Rwy 15-33
REIL Rws 15 and 33
 Rwy 33 Idg 8100'
 (Military Operations Only)
 Rwy 15 take-off 8100'
 (Military Operations Only)

FAF to MAP 6.1 NM

Knots	60	90	120	150	180
Min:Sec	6:06	4:04	3:03	2:26	2:02



CATEGORY	A	B	C	D
S-ILS 33		214-1	200 (200-1)	
S-LOC 33		380-1	366 (400-1)	
C CIRCLING	540-1	518 (600-1)	580-1½ 558 (600-1½)	740-2¼ 718 (800-2¼)

NE-3, 05 SEP 2024 to 03 OCT 2024

NE-3, 05 SEP 2024 to 03 OCT 2024