

VORTAC POM <b>110.4</b> Chan 41	APP CRS <b>344°</b>	Rwy Idg TDZE Apt Elev	<b>N/A</b> <b>N/A</b> <b>1014</b>
---------------------------------------	------------------------	-----------------------------	---

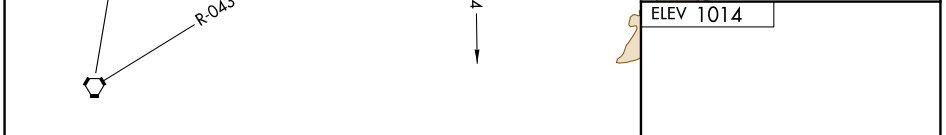
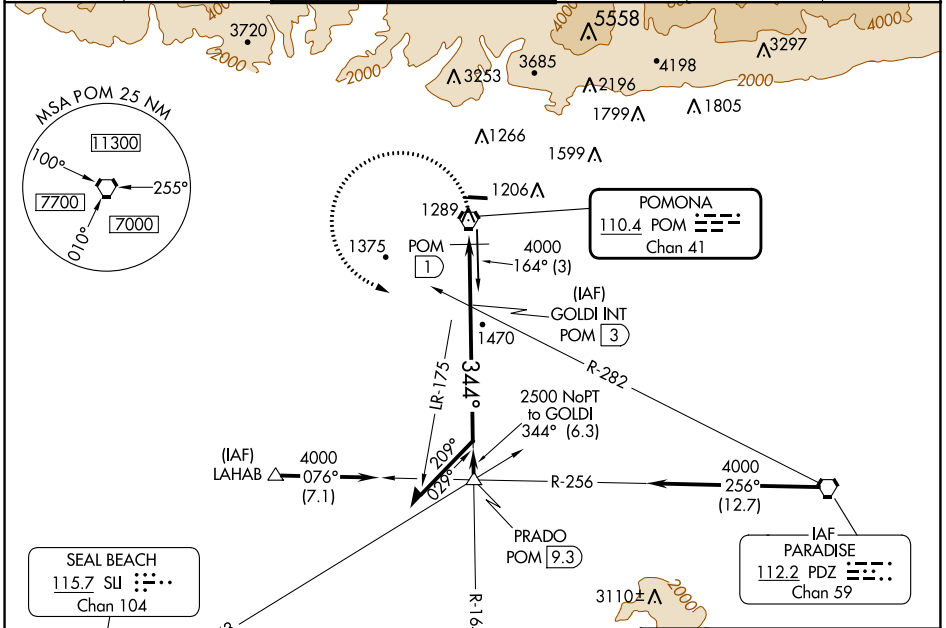
# VOR or GPS-A

BRACKETT FLD (POC)

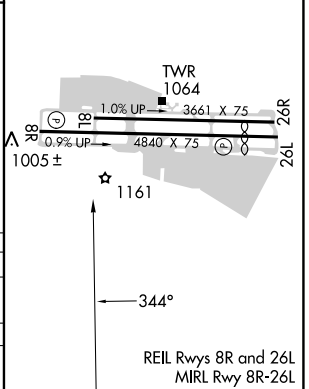
**⚠** When local altimeter setting not received, use Ontario Intl altimeter setting and increase all MDA 40 feet and visibility Cat C ¼ mile. Night landing: Rwy 8L NA, Rwy 8R operational VGSi required, remain on or above VGSi glidepath until threshold. Helicopter visibility reduction below 1 SM not authorized. Circling NA for Cat C north of Rwy 8L-26R

MISSED APPROACH: Climbing left turn to 4000 via POM R-164 to PRADO INT.

ATIS <b>124.4</b>	SOCAL APP CON <b>125.5 349.0</b>	BRACKETT TOWER* RWY 8R/26L <b>118.2</b> (CTAF)	RWY 8L/26R <b>133.3</b>	GND CON <b>125.0</b>	CLNC DEL <b>121.875</b>	UNICOM <b>122.95</b>
----------------------	-------------------------------------	--	----------------------------	-------------------------	----------------------------	-------------------------



4000	PRADO	GOLDI INT POM (3)			Remain within 10 NM
POM R-164	△				
POM VORTAC	POM (1)				
1800		2500		4000	
← 1 NM		← 2 NM			
CATEGORY	A	B	C	D	
<b>C</b> CIRCLING	1800-1 786 (800-1)	1800-1¼ 786 (800-1¼)	1800-2¼ 786 (800-2¼)	NA	
DME MINIMUMS					
<b>C</b> CIRCLING	1680-1 666 (700-1)		1760-2¼ 746 (800-2¼)	NA	



SW-3, 03 OCT 2024 to 31 OCT 2024

SW-3, 03 OCT 2024 to 31 OCT 2024