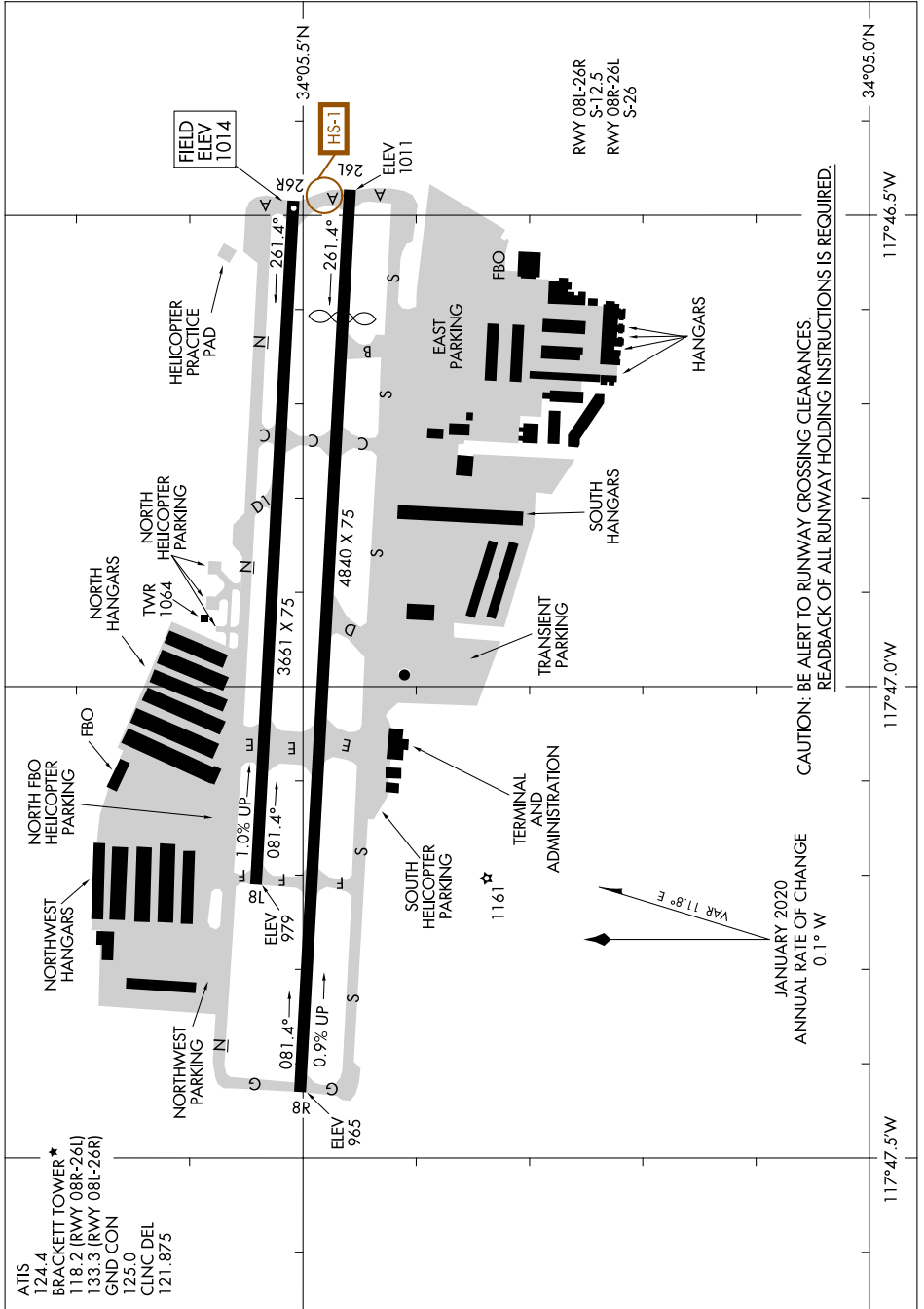


# AIRPORT DIAGRAM

AL-5218 (FAA)

BRACKETT FLD (POC)  
LA VERNE, CALIFORNIA

SW-3, 31 OCT 2024 to 28 NOV 2024



CAUTION: BE ALERT TO RUNWAY CROSSING CLEARANCES  
READBACK OF ALL RUNWAY HOLDING INSTRUCTIONS IS REQUIRED.

JANUARY 2020  
ANNUAL RATE OF CHANGE  
0.1° W

# AIRPORT DIAGRAM

LA VERNE, CALIFORNIA  
BRACKETT FLD (POC)

SW-3, 31 OCT 2024 to 28 NOV 2024