

WAAS CH <b>65612</b> <b>W14A</b>	APP CRS <b>143°</b>	Rwy Idg TDZE <b>1961</b> Apt Elev <b>1961</b>
--	------------------------	---

# RNAV (GPS) RWY 14

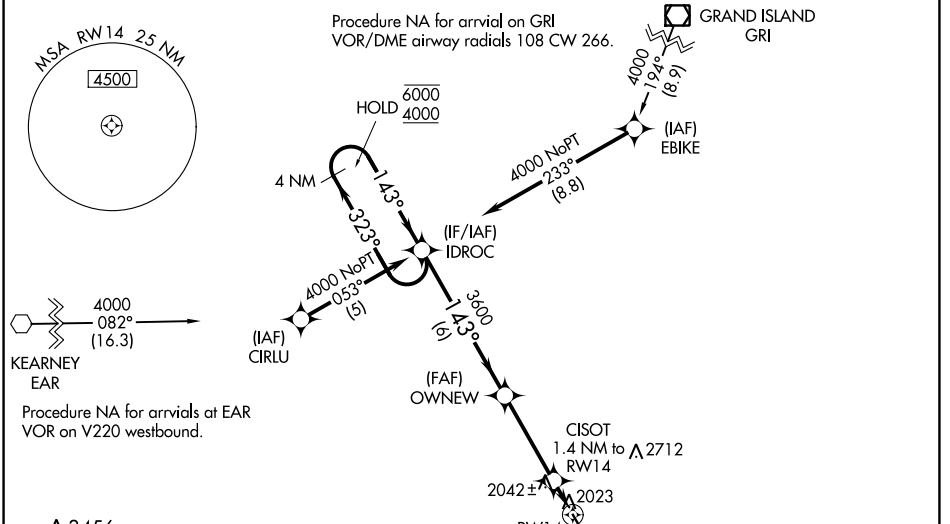
HASTINGS MUNI (HSI)

RNP APCH.

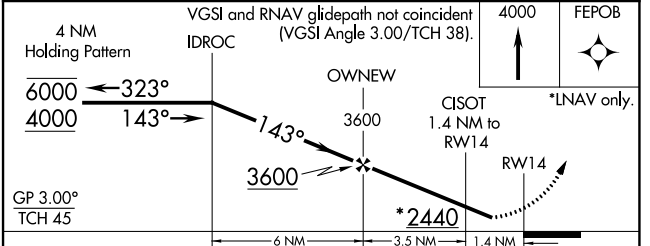
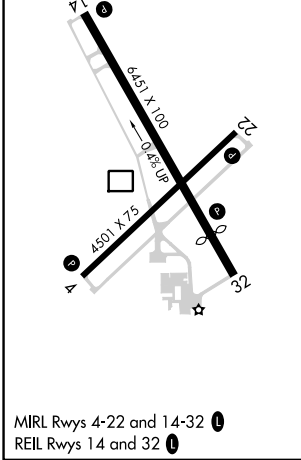
**⚠** Rwy 14 helicopter visibility reduction below 3/4 SM NA. For uncompensated Baro-VNAV systems, procedure NA below -18°C or above 54°C. Circling NA for Cat D east of Rwy 14-32.

MISSED APPROACH: Climb to 4000 direct FEPOB and hold.

ASOS <b>120.525</b>	MINNEAPOLIS CENTER <b>119.4 278.8</b>	UNICOM <b>122.8 (CTAF) 0</b>
------------------------	--	---------------------------------



ELEV <b>1961</b>	<b>D</b>	TDZE <b>1961</b>
------------------	----------	------------------



CATEGORY	A	B	C	D
LPV DA		2220-1	259 (300-1)	
LNAV/VNAV DA		2280-1	319 (400-1)	
LNAV MDA		2300-1	339 (400-1)	
<b>C</b> CIRCLING	2380-1 419 (500-1)	2540-1 579 (600-1)	2540-1½ 579 (600-1½)	2540-2 579 (600-2)

NC-2, 03 OCT 2024 to 31 OCT 2024

NC-2, 03 OCT 2024 to 31 OCT 2024