

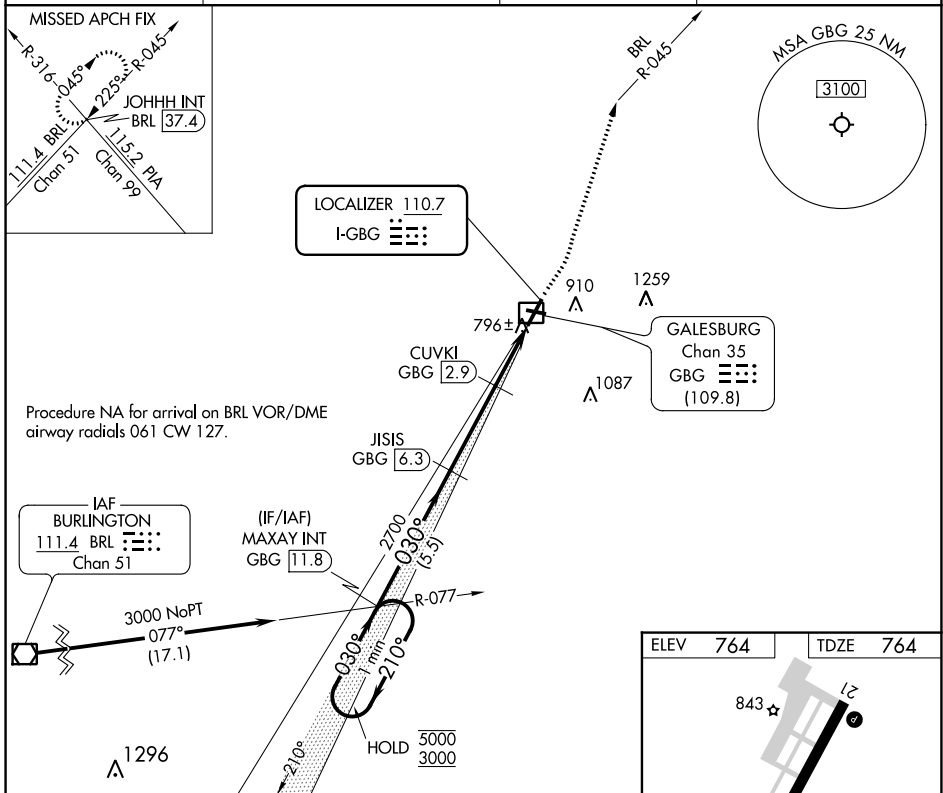
LOC I-GBG 110.7	APP CRS 030°	Rwy Idg TDZE Apt Elev	5792 764 764
---------------------------	------------------------	-----------------------------	---

ILS or LOC RWY 3

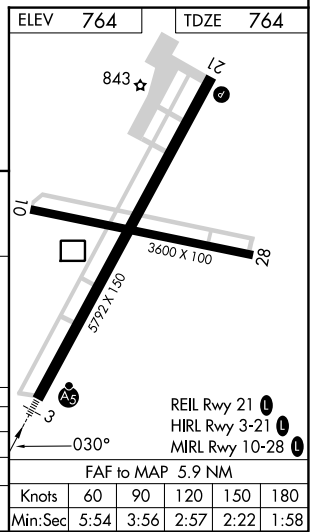
GALESBURG MUNI (GBG)

DME required.		MALS R	MISSED APPROACH: Climb to 1200 then climbing left turn to 3000 on heading 020° and BRL VOR/DME R-045 to JOHHH INT/ BRL 37.4 DME and hold.
▼ For inop ALS, increase S-LOC 3 Cat C/D visibility to ½ SM. ▲ NA DME from GBG DME. DME use requires simultaneous reception of I-GBG and GBG DME.			

AWOS-3 118.975	QUAD CITY APP CON ★ 133.275 257.8	CLNC DEL 120.7	UNICOM 123.0 (CTAF)
--------------------------	---	--------------------------	-------------------------------



One Minute Holding Pattern	MAXAY INT GBG 11.8	1200	3000	BRL R-045	JOHHH INT
5000 ← 210°	3000 → 030°	2700	1600	CUVKI GBG 2.9	JISIS GBG 6.3
GS 3.00° TCH 55		2700	1600	GBG 1.2	
	5.5 NM	3.4 NM	1.7 NM	0.8 NM	
CATEGORY	A	B	C	D	
S-ILS 3		964-½	200 (200-½)		
S-LOC 3		1060-½	296 (300-½)		
CIRCLING	1220-1	456 (500-1)	1380-1¾ 616 (700-1¾)	1620-2¾ 856 (900-2¾)	



EC-3, 31 OCT 2024 to 28 NOV 2024

EC-3, 31 OCT 2024 to 28 NOV 2024

FAF to MAP 5.9 NM					
Knots	60	90	120	150	180
Min:Sec	5:54	3:56	2:57	2:22	1:58