

IRONWOOD, MICHIGAN

AL-5213 (FAA)

24025

VOR/DME IWD <b>108.8</b> Chan 25	APP CRS <b>079°</b>	Rwy ldg TDZE <b>1230</b> Apt Elev <b>1230</b>
--	------------------------	---

# VOR RWY 9

GOGEBIC/IRON COUNTY (IWD)

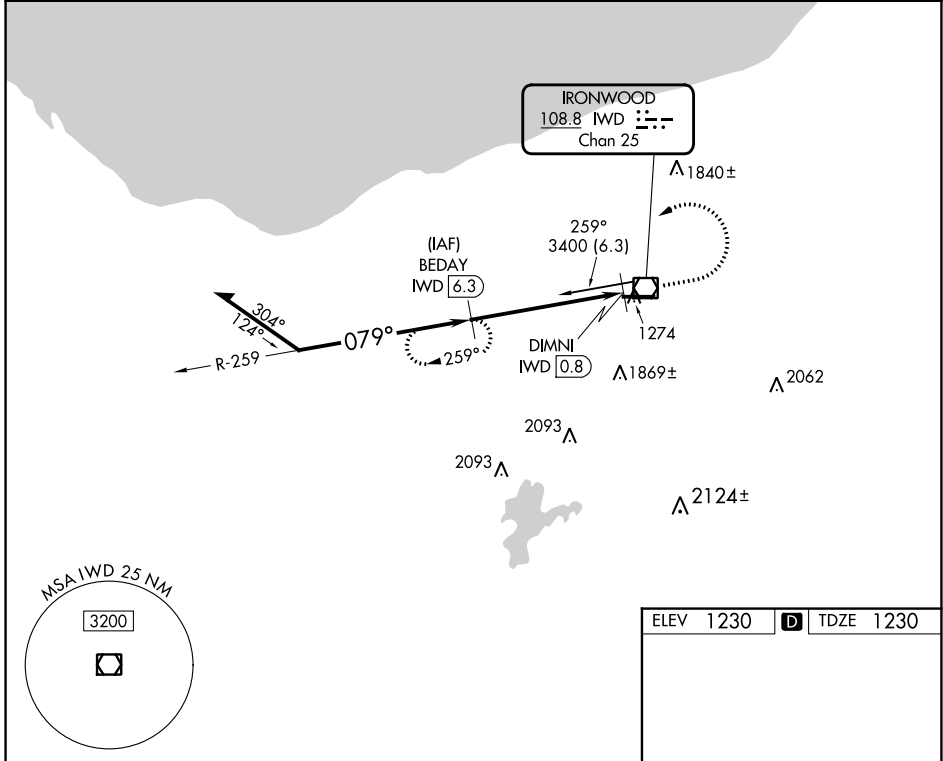
DME required.

**⚠** Rwy 9 helicopter visibility reduction below 1 SM NA. When local altimeter setting not received, use Ashland altimeter setting: increase all MDA 140 feet and S-9 Cat C visibility ¼ SM, Cat D visibility ½ SM and Circling Cat B visibility ¼ SM.

**⚠** -27°C

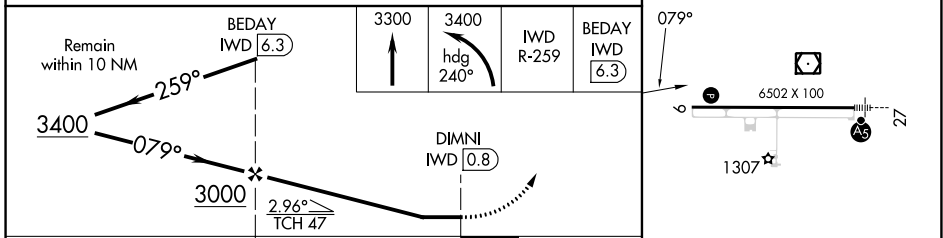
MISSED APPROACH: Climb to 3300 then climbing left turn to 3400 on heading 240° and IWD R-259 to BEDAY/6.3 DME and hold.

AWOS-3PT <b>125.175</b>	MINNEAPOLIS CENTER <b>133.55</b>	UNICOM <b>122.8 (CTAF)</b>
----------------------------	-------------------------------------	-------------------------------

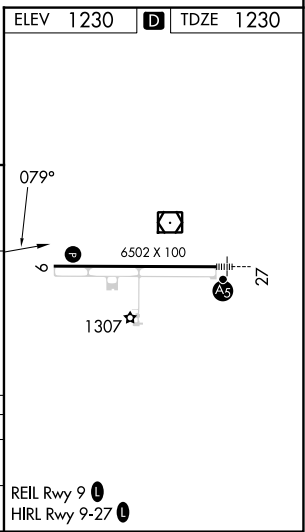


EC-1, 03 OCT 2024 to 31 OCT 2024

EC-1, 03 OCT 2024 to 31 OCT 2024



CATEGORY	A	B	C	D
S-9	1740-1	510 (600-1)	1740-1½	510 (600-1½)
CIRCLING	2100-1¼	870 (900-1¼)	2200-3 970 (1000-3)	2220-3 990 (1000-3)



IRONWOOD, MICHIGAN  
Amdt 13B 15JUL21

46°32'N-90°08'W

# VOR RWY 9

GOGEBIC/IRON COUNTY (IWD)