

WAAS CH 58230 W11A	APP CRS 113°	Rwy Idg TDZE Apt Elev	5500 1574 1574
--	------------------------	-----------------------------	---

RNAV (GPS) RWY 11

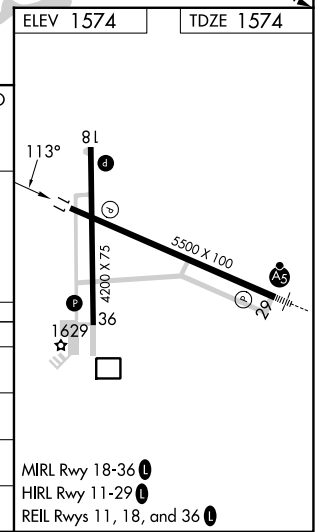
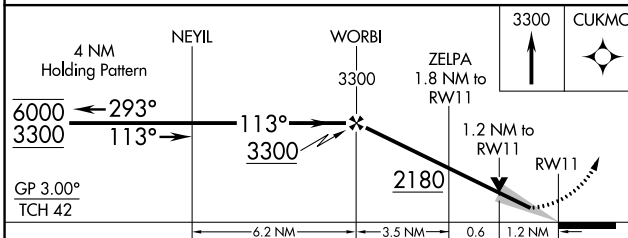
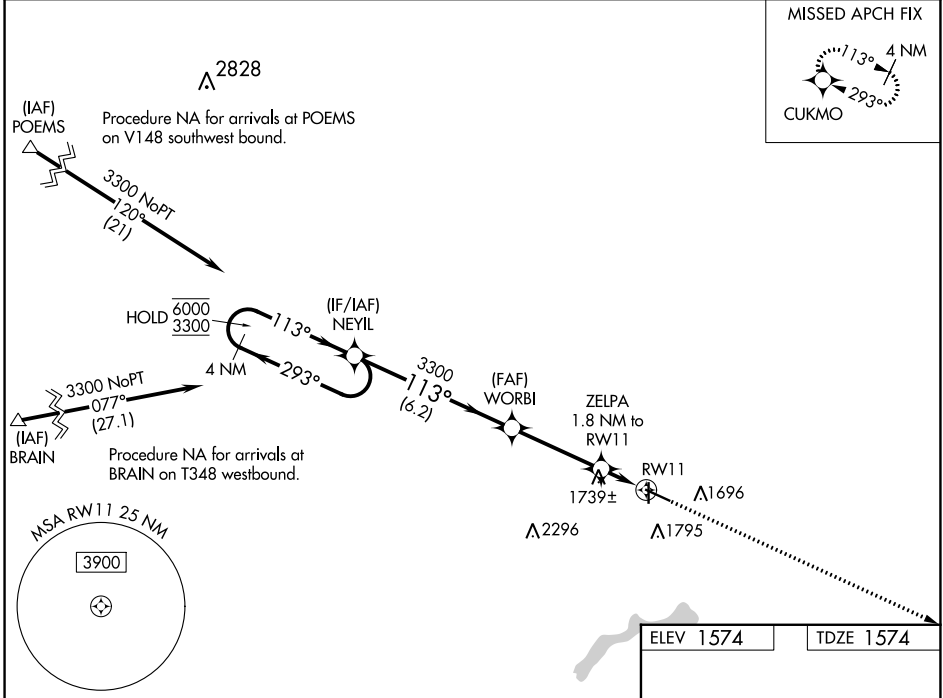
WORTHINGTON MUNI (OTG)

RNP APCH - GPS.

For uncompensated Baro-VNAV systems, LNAV/VNAV NA below -23°C or above 54°C.

MISSED APPROACH: Climb to 3300 direct CUKMO and hold.

AWOS-3PT 121.075	MINNEAPOLIS CENTER 132.05 317.4	UNICOM 122.8 (CTAF)
----------------------------	---	-------------------------------



CATEGORY	A	B	C	D
LPV DA		1824-1	250 (300-1)	
LNAV/VNAV DA		1826-1	252 (300-1)	
LNAV MDA	2000-1	426 (500-1)	2000-1¼	426 (500-1¼)
CIRCLING	2100-1	526 (600-1)	2100-1½	2320-2½
			526 (600-1½)	746 (800-2½)

NC-1, 31 OCT 2024 to 28 NOV 2024

NC-1, 31 OCT 2024 to 28 NOV 2024