

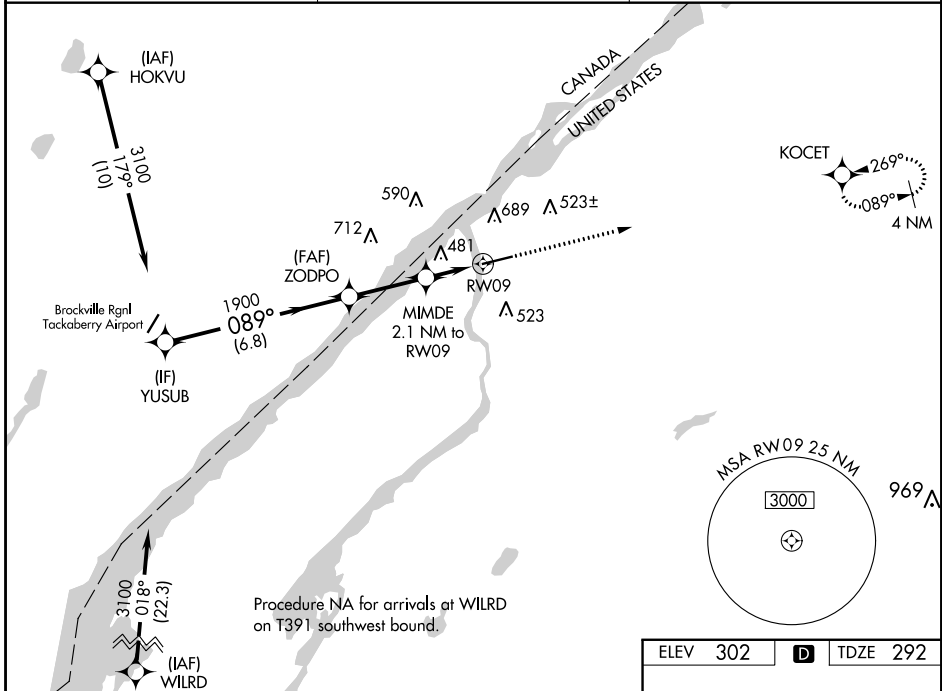
WAAS CH 69528 W09A	APP CRS 089°	Rwy Idg TDZE 292 Apt Elev 302	6006
--	------------------------	---	-------------

RNAV (GPS) RWY 9

OGDENSBURG INTL (OGS)

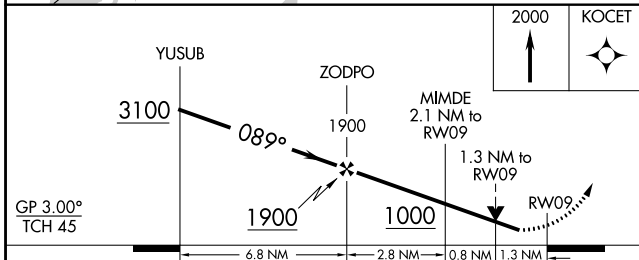
RNP APCH - GPS.	MISSED APPROACH: Climb to 2000 direct KOCET and hold.
<p>▽ Rwy 9 helicopter visibility reduction below 3/4 SM NA. For uncompensated Baro-VNAV systems, LNAV/VNAV NA below -15°C or above 54°C.</p>	

AWOS-3 118,525	BOSTON CENTER 135.25 377.1	UNICOM 122.8 (CTAF) 0
--------------------------	--------------------------------------	---------------------------------



NE-2, 31 OCT 2024 to 28 NOV 2024

NE-2, 31 OCT 2024 to 28 NOV 2024



ELEV 302	D TDZE 292
----------	-------------------

CATEGORY	A	B	C	D
LPV DA		543-3/4	251 (300-3/4)	
LNAV/VNAV DA		781-13/8	489 (500-13/8)	
LNAV MDA	740-1	448 (500-1)	740-13/8	448 (500-13/8)
C CIRCLING	760-1 458 (500-1)	1000-1 698 (700-1)	1000-2 698 (700-2)	1000-21/4 698 (700-21/4)

