

|  |                        |                             |   |
|--|------------------------|-----------------------------|---|
| WAAS<br>CH <b>77836</b><br><b>W22A</b> | APP CRS<br><b>217°</b> | Rwy Idg<br>TDZE<br>Apt Elev | <b>4997</b><br><b>1119</b><br><b>1119</b> |
|--|------------------------|-----------------------------|---|

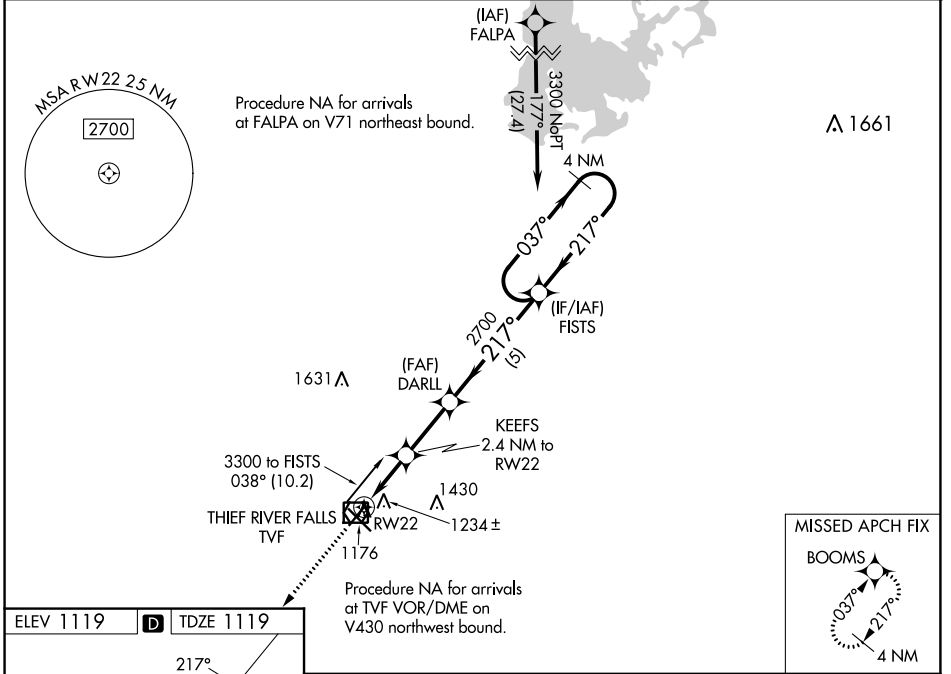
# RNAV (GPS) RWY 22

THIEF RIVER FALLS RGNL (TVF)

**⚠** Baro-VNAV and VDP NA when using Crookston altimeter setting. For uncompensated Baro-VNAV systems, LNAV/VNAV NA below -17°C (2°F) or above 54°C (130°F). DME/DME RNP-0.3 NA. When local altimeter setting not received, use Crookston altimeter setting and increase all DA 82 feet and all MDA 100 feet. Increase LPV all Cats visibility to 1 1/8 mile and LNAV/VNAV all Cats visibility to 1 1/4 mile.

**MISSED APPROACH:**  
Climb 3300 direct  
BOOMS and hold.

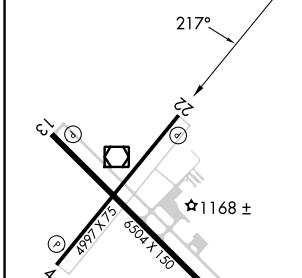
|                            |   |  |
|----------------------------|---|--|
| AWOS-3PT<br><b>119.025</b> | MINNEAPOLIS CENTER<br><b>132.15 269.6</b> | UNICOM<br><b>122.8 (CTAF)</b> <b>📻</b> |
|----------------------------|---|--|



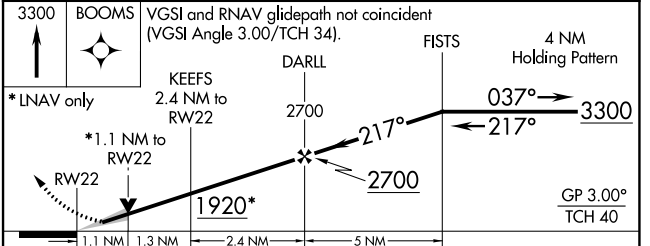
NC-1, 03 OCT 2024 to 31 OCT 2024

NC-1, 03 OCT 2024 to 31 OCT 2024

|           |          |           |
|-----------|----------|-----------|
| ELEV 1119 | <b>D</b> | TDZE 1119 |
|-----------|----------|-----------|



HIRL Rwy 13-31 **📻**  
MIRL Rwy 4-22 **📻**  
REIL Rwy 4, 13 and 22 **📻**



| CATEGORY          | A                     | B                     | C | D  |
|-------------------|-----------------------|-----------------------|---|----|
| LPV DA            | 1369-1                | 250 (300-1)           |   | NA |
| LNAV/VNAV DA      | 1396-1                | 277 (300-1)           |   | NA |
| LNAV MDA          | 1500-1                | 381 (400-1)           |   | NA |
| <b>C</b> CIRCLING | 1540-1<br>421 (500-1) | 1580-1<br>461 (500-1) |   | NA |