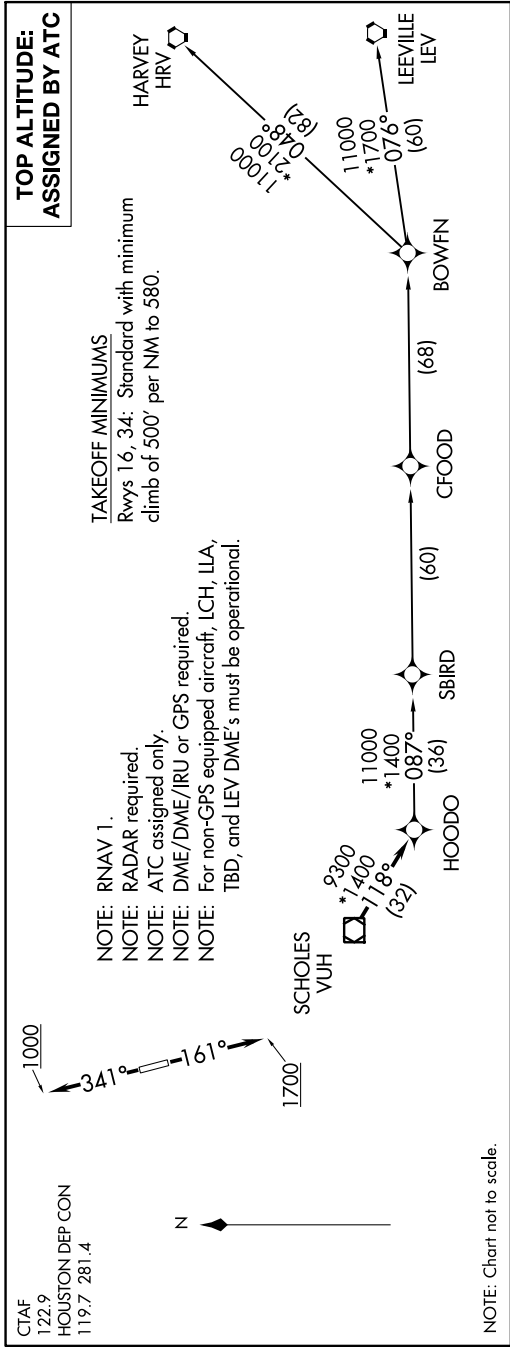


SC-5, 31 OCT 2024 to 28 NOV 2024



**DEPARTURE ROUTE DESCRIPTION**

TAKEOFF RUNWAY 16: Climb on heading 161° to 1700, for RADAR vectors to VUH VOR/DME, thence . . . .

TAKEOFF RUNWAY 34: Climb on heading 341° to 1000, for RADAR vectors to VUH VOR/DME, thence . . . .

. . . . on track 118° to HOODO, then on (transition). Maintain ATC assigned altitude.  
 Expect filed altitude 10 minutes after departure.

BOWFN TRANSITION (HOODO7.BOWFN)  
CFOOD TRANSITION (HOODO7.CFOOD)  
HARVEY TRANSITION (HOODO7.HRV)  
LEEVILLE TRANSITION (HOODO7.LEV)  
SBIRD TRANSITION (HOODO7.SBIRD)

SC-5, 31 OCT 2024 to 28 NOV 2024