

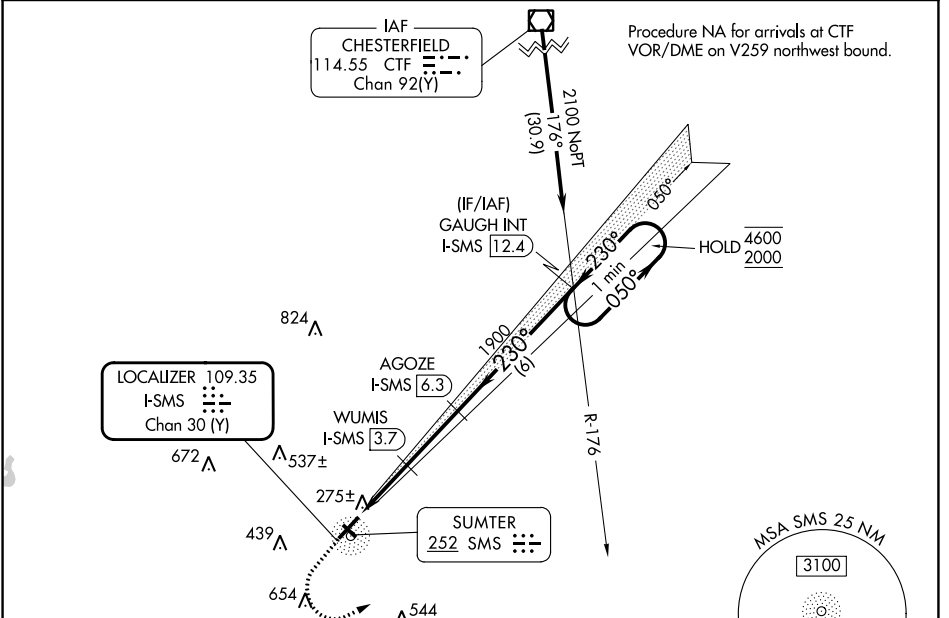
LOC/DME I-SMS <b>109.35</b> Chan <b>30</b> (Y)	APP CRS <b>230°</b>	Rwy Idg <b>5501</b> TDZE <b>182</b> Apt Elev <b>182</b>
--	------------------------	---

# ILS or LOC RWY 23

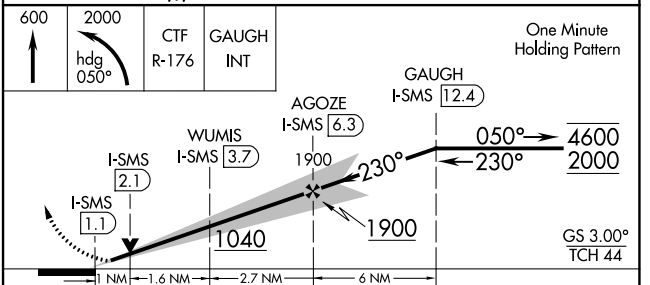
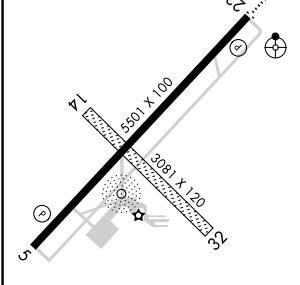
SUMTER (SMS)

DME required.	ODALS	MISSED APPROACH: Climb to 600 then climbing left turn to 2000 on heading 050° and CTF VOR/DME R-176 to GAUGH INT/I-SMS 12.4 DME and hold.
<b>⚠</b> Circling NA to Rwy 14 and 32. Inop table does not apply to S-ILS 23 all Cats.		

AWOS-3 <b>118.075</b>	SHAW APP CON ★ <b>125.4</b>	UNICOM <b>122.7</b> (CTAF) <b>Ⓛ</b>
--------------------------	--------------------------------	--



ELEV 182	TDZE 182
----------	----------



CATEGORY	A	B	C	D
S-ILS 23		382- <sup>3</sup> / <sub>4</sub>	200 (200- <sup>3</sup> / <sub>4</sub> )	
S-LOC 23	540- <sup>3</sup> / <sub>4</sub>	358 (400- <sup>3</sup> / <sub>4</sub> )	540- <sup>7</sup> / <sub>8</sub>	358 (400- <sup>7</sup> / <sub>8</sub> )
<b>C</b> CIRCLING	600-1 418 (500-1)	680-1 498 (500-1)	960-2 <sup>1</sup> / <sub>4</sub> 778 (800-2 <sup>1</sup> / <sub>4</sub> )	960-2 <sup>1</sup> / <sub>2</sub> 778 (800-2 <sup>1</sup> / <sub>2</sub> )

SE-2, 31 OCT 2024 to 28 NOV 2024

SE-2, 31 OCT 2024 to 28 NOV 2024