

VOR/DME GFK 114.3 Chan 90	APP CRS 183°	Rwy Idg TDZE 843 Apt Elev 845	7351
---	------------------------	---	-------------

VOR RWY 17R

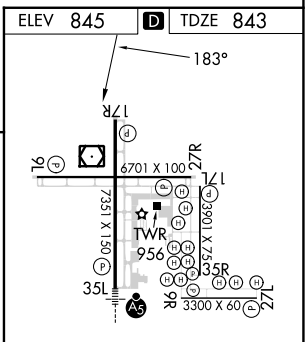
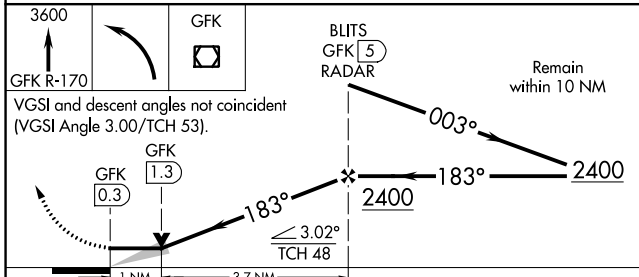
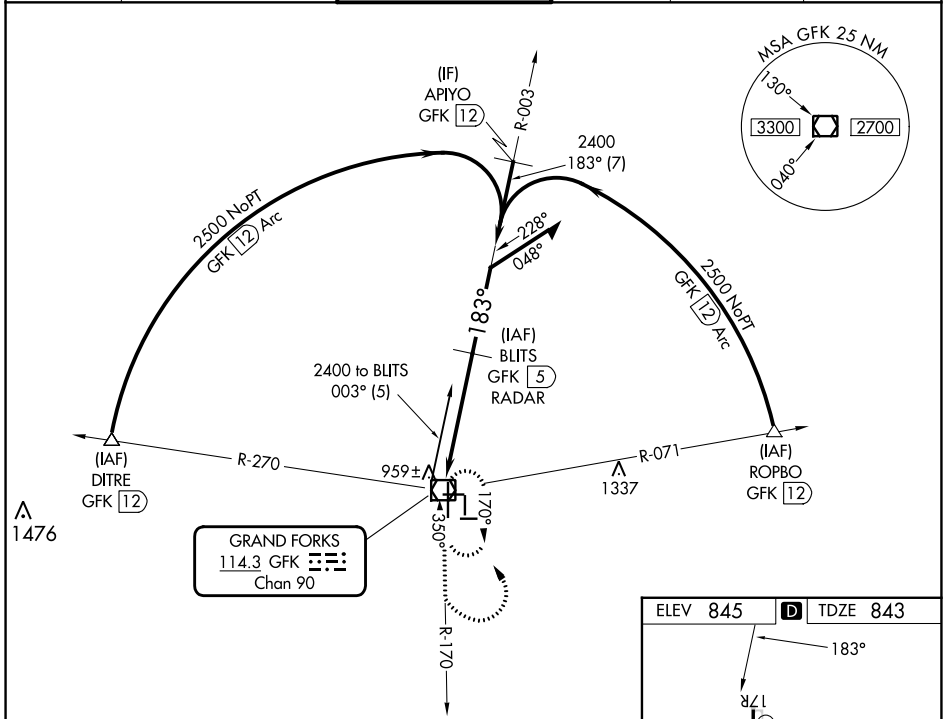
GRAND FORKS INTL (GFK)

DME or RADAR required.

▼ When local altimeter setting not received, use Crookston altimeter setting and increase all MDAs 80 feet; Increase Cat C/D visibility to 1 3/8 SM and Circling Cat C visibility 1/4 SM.
▲ VDP NA with Crookston altimeter setting.

MISSED APPROACH: Climb to 3600 on GFK VOR/DME R-170 then left turn direct GFK VOR/DME and hold.

ATIS 119.4	GRAND FORKS APP CON * 118.1 318.1	GRAND FORKS TOWER* 118.4(CTAF) 350.35	GND CON 124.575	CLNC DEL 135.725	UNICOM 122.95
----------------------	---	---	---------------------------	----------------------------	-------------------------



ELEV 845	D	TDZE 843
MIRL Rwy 9L-27R 1		
MIRL Rwy 9R-27L and 17L-35R 1		
HIRL Rwy 17R-35L 1		
REIL Rwy 17R and 27R 1		
FAF to MAP 4.7 NM		
Knots	60	90 120 150 180
Min:Sec	4:42	3:08 2:21 1:53 1:34

CATEGORY	A	B	C	D
S-17R	1220-1	377 (400-1)		1220-1 1/4 377 (400-1 1/4)
CIRCLING	1280-1 435 (500-1)	1300-1 455 (500-1)	1400-1 1/2 555 (600-1 1/2)	1400-2 555 (600-2)