

| | | | |
|--|------------------------|---|-------------|
| WAAS CH 58104 W09A | APP CRS 084° | Rwy Idg TDZE 843 Apt Elev 845 | 4206 |
|--|------------------------|---|-------------|

RNAV (GPS) RWY 9L

GRAND FORKS INTL (GFK)

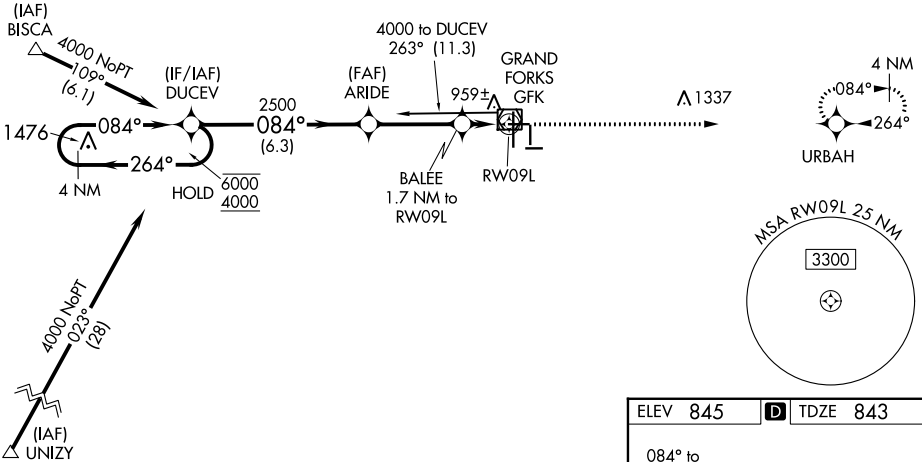
RNP APCH.

Baro-VNAV and VDP NA when using Crookston altimeter setting.
 For uncompensated Baro-VNAV systems, LNAV/VNAV NA below -16°C or above 54°C. When local altimeter setting not received, use Crookston altimeter setting and increase all DA 62 feet and all MDA 80 feet, increase LNAV Cat C visibility $\frac{3}{8}$ SM, Cat D visibility $\frac{1}{8}$ SM and Circling Cat C $\frac{1}{4}$ SM.

MISSED APPROACH: Climb to 2800 direct URBAN and hold.

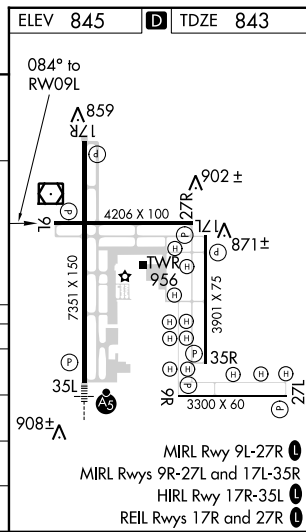
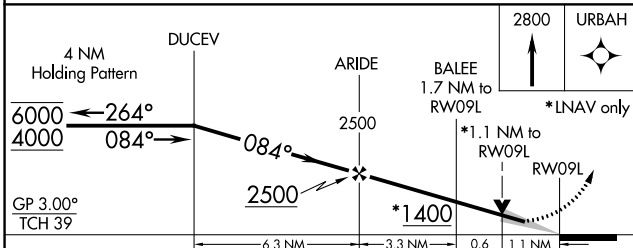
| | | | | | |
|----------------------|---|---|---------------------------|----------------------------|-------------------------|
| ATIS 119.4 | GRAND FORKS APP CON * 118.1 318.1 | GRAND FORKS TOWER * 118.4 (CTAF) 0 350.35 | GND CON 124.575 | CLNC DEL 135.725 | UNICOM 122.95 |
|----------------------|---|---|---------------------------|----------------------------|-------------------------|

Procedure NA for arrivals at GFK VOR/DME on V55 northeast bound.



NC-1, 18 MAY 2023 to 15 JUN 2023

NC-1, 18 MAY 2023 to 15 JUN 2023



| CATEGORY | A | B | C | D |
|--------------|-------------|-------------|-------------------------|-------------|
| LPV DA | 1093-1 | | 250 (300-1) | |
| LNAV/VNAV DA | 1238-1½ | | 395 (400-1½) | |
| LNAV MDA | 1220-1 | | 377 (400-1) | |
| | | | 1220-1¼ 377 (400-1¼) | |
| CIRCLING | 1260-1 | 1300-1 | 1400-1½ | 1400-2 |
| | 415 (500-1) | 455 (500-1) | 555 (600-1½) | 555 (600-2) |

MIRL Rwy 9L-27R
 MIRL Rwys 9R-27L and 17L-35R
 HIRL Rwy 17R-35L
 REIL Rwys 17R and 27R