

WAAS CH <b>63199</b> <b>W17A</b>	APP CRS <b>174°</b>	Rwy Idg TDZE <b>843</b> Apt Elev <b>845</b>	<b>7351</b> <b>843</b> <b>845</b>
--	------------------------	---	---

# RNAV (GPS) RWY 17R

GRAND FORKS INTL (GFK)

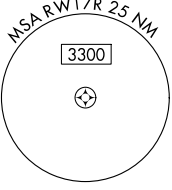
RNP APCH - GPS.

**⚠** Baro-VNAV NA when using Crookston altimeter setting. For uncompensated Baro-VNAV systems, LNAV/VNAV NA below -20°C or above 54°C. VDP NA with Crookston altimeter setting.

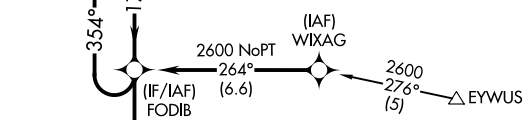
**⚠** When local altimeter setting not received, use Crookston altimeter setting and increase all DA 62 feet and all MDA 80 feet and increase LPV and LNAV/VNAV all Cats visibility  $\frac{1}{8}$  SM, LNAV Cats C/D visibility  $\frac{1}{8}$  SM, and Circling Cat C visibility  $\frac{1}{4}$  SM.

MISSED APPROACH:  
Climb to 2600 direct  
ERIXE and hold.

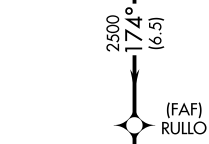
ATIS <b>119.4</b>	GRAND FORKS APP CON* <b>118.1 318.1</b>	GRAND FORKS TOWER* <b>118.4(CTAF) 0 350.35</b>	GND CON <b>124.575</b>	CLNC DEL <b>135.725</b>	UNICOM <b>122.95</b>
----------------------	--	---	---------------------------	----------------------------	-------------------------



Procedure NA for arrivals at WUTSO  
on T407 northbound.



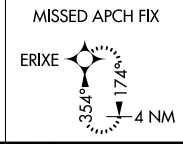
Procedure NA for arrivals at EYWUS  
on V171 northeast bound.



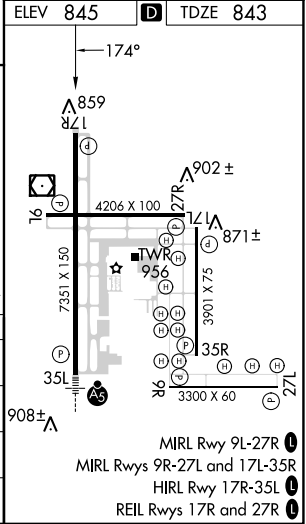
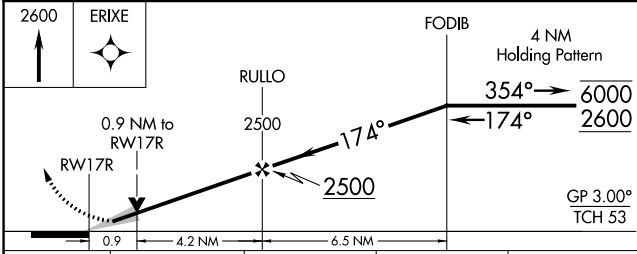
△ 1476



△ 1337



Procedure NA for arrivals on GFK VOR/DME  
airway radial 071 westbound and on  
airway radial 270 eastbound.



CATEGORY	A	B	C	D
LPV DA		1043- $\frac{3}{4}$	200 (200- $\frac{3}{4}$ )	
LNAV/VNAV DA		1093- $\frac{3}{4}$	250 (300- $\frac{3}{4}$ )	
LNAV MDA		1180-1	337 (400-1)	
<b>C</b> CIRCLING	1260-1 415 (500-1)	1300-1 455 (500-1)	1400-1½ 555 (600-1½)	1400-2 555 (600-2)

NC-1, 03 OCT 2024 to 31 OCT 2024

NC-1, 03 OCT 2024 to 31 OCT 2024