

LOC I-TIW <b>109.1</b>	APP CRS <b>167°</b>	Rwy Idg <b>5002</b>
		TDZE <b>294</b>
		Apt Elev <b>295</b>

# ILS or LOC RWY 17

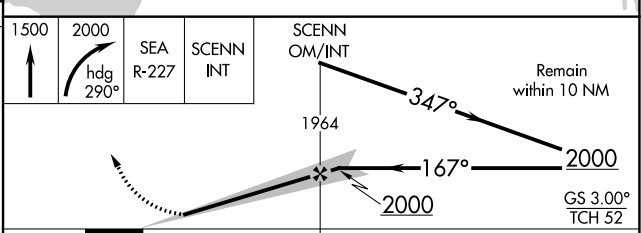
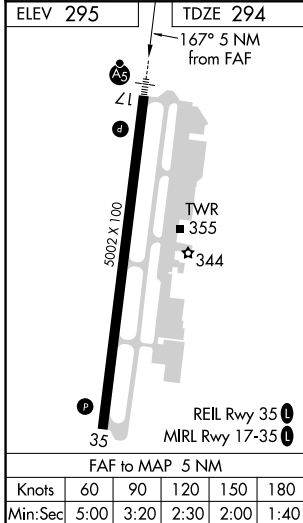
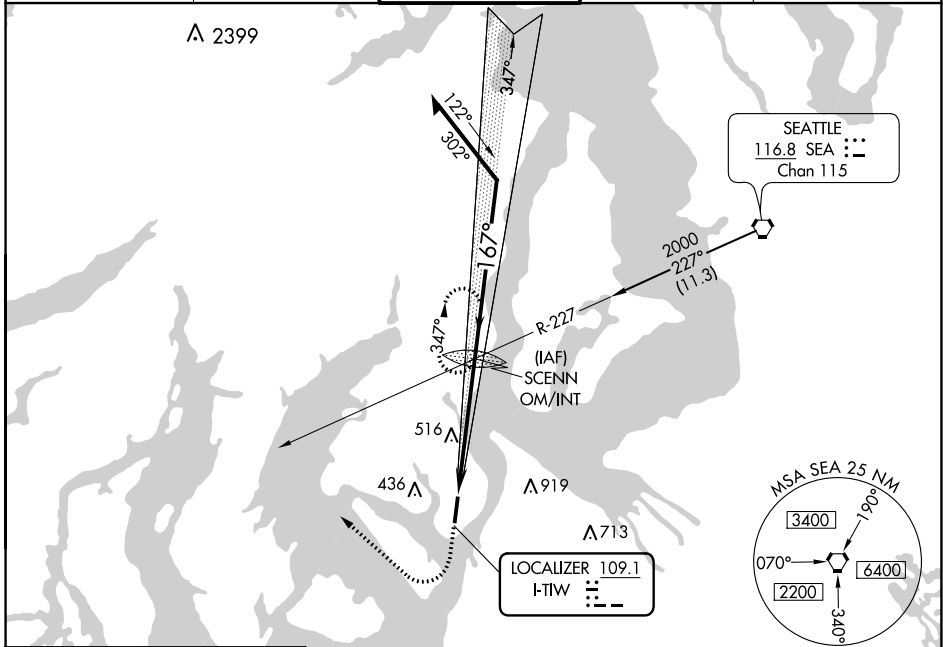
TACOMA NARROWS (TIW)

⚠ When control tower closed, obtain local altimeter setting on UNICOM, when not received, use McChord Fld altimeter setting minimums.  
 ⚠ Circling not authorized east of Rwy 17-35.



MISSED APPROACH: Climb to 1500, then climbing right turn to 2000 via heading 290° and SEA VORTAC R-227 to SCENN INT and hold.

ATIS <b>124.05</b>	SEATTLE APP CON <b>120.1 290.9</b>	TACOMA TOWER* <b>118.5 (CTAF) 0 253.5</b>	GND CON <b>121.8</b>	UNICOM <b>122.95</b>
-----------------------	---------------------------------------	--	-------------------------	-------------------------



CATEGORY	A	B	C	D
S-ILS 17	494-½ 200 (200-½)			
S-LOC 17	760-½	466 (500-½)	466 (500-¾)	760-1
CIRCLING	760-1	465 (500-1)	760-1½	860-2
MCHORD FLD ALTIMETER SETTING MINIMUMS				
S-ILS 17	519-½ 225 (300-½)			
S-LOC 17	780-½	486 (500-½)	780-¾	780-1
CIRCLING	780-1	485 (500-1)	780-1½	860-2

NW-1, 30 DEC 2021 to 27 JAN 2022

NW-1, 30 DEC 2021 to 27 JAN 2022