

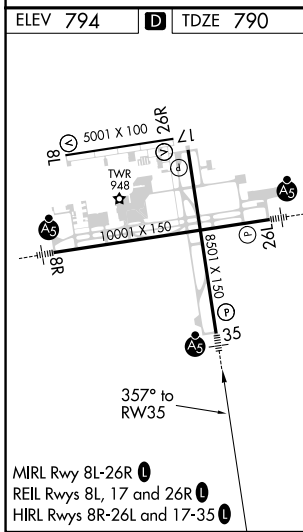
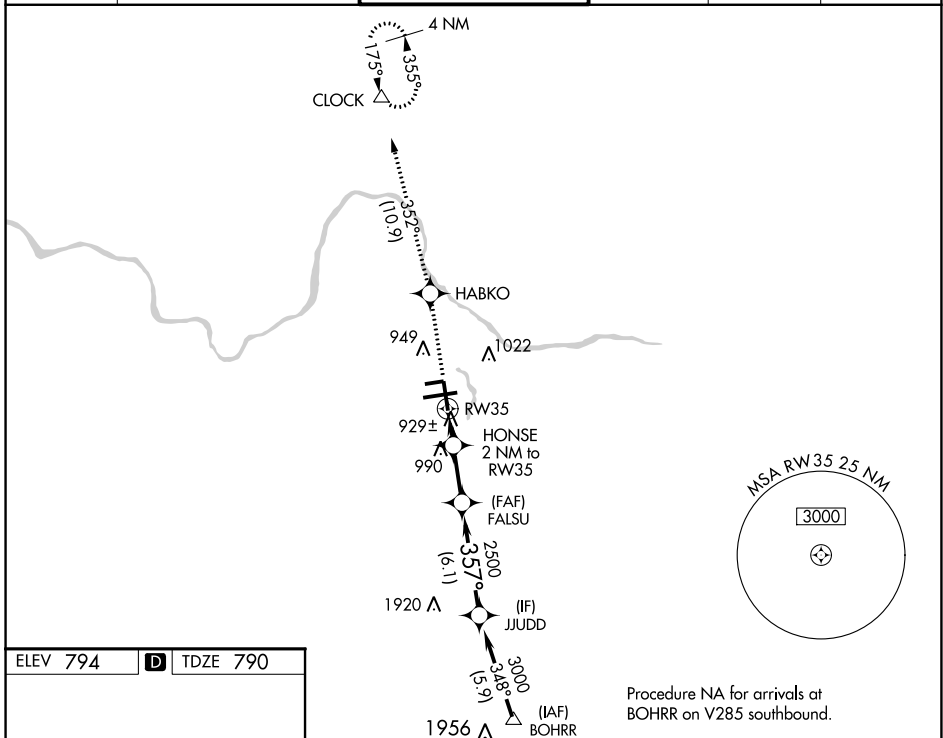
WAAS CH 87112 W35A	APP CRS 357°	Rwy Idg 8501 TDZE 790 Apt Elev 794
--	------------------------	---

RNAV (GPS) RWY 35

GERALD R FORD INTL (G.R.R.)

RNP APCH.	MALSR	MISSED APPROACH: Climb to 3000 direct HABKO and track 352° to CLOCK and hold.
ASR	AS	For uncompensated Baro-VNAV systems, LNAV/VNAV NA below -16°C or above 54°C. For inop ALS, increase LNAV Cat D visibility to RVR 6000. ** RVR 1800 authorized with use of FD or AP or HUD to DA.

ATIS 118.725	GREAT LAKES APP CON * 128.4 257.6	GRAND RAPIDS TOWER * 135.65 (CTAF) 0 339.8	GND CON 121.8	CLNC DEL 119.3	UNICOM 122.95
------------------------	---	--	-------------------------	--------------------------	-------------------------



Procedure NA for arrivals at BOHRR on V285 southbound.	3000	HABKO	CLOCK	VGSI and RNAV glidepath not coincident (VGSI Angle 3.00/TCH 74).	JUDD
	↑	✧	△		
		tr 352°			
* LNAV only.		HONSE 2 NM to RW35	FALSU 2500	3000	GP 3.00° TCH 55
		* 1 NM to RW35		357°	
		* 1480		2500	
	1 NM	1 NM	3.1 NM	6.1 NM	
CATEGORY	A	B	C	D	
LPV DA**		990/24	200 (200-½)		
LNAV/VNAV DA		1236/50	446 (500-1)		
LNAV MDA	1180/24	390 (400-½)	1180/35 390 (400-¾)	1180/50 390 (400-1)	
CIRCLING	1260-1	466 (500-1)	1340-1½ 546 (600-1½)	1360-2 566 (600-2)	

EC-1, 02 DEC 2021 to 30 DEC 2021

EC-1, 02 DEC 2021 to 30 DEC 2021