

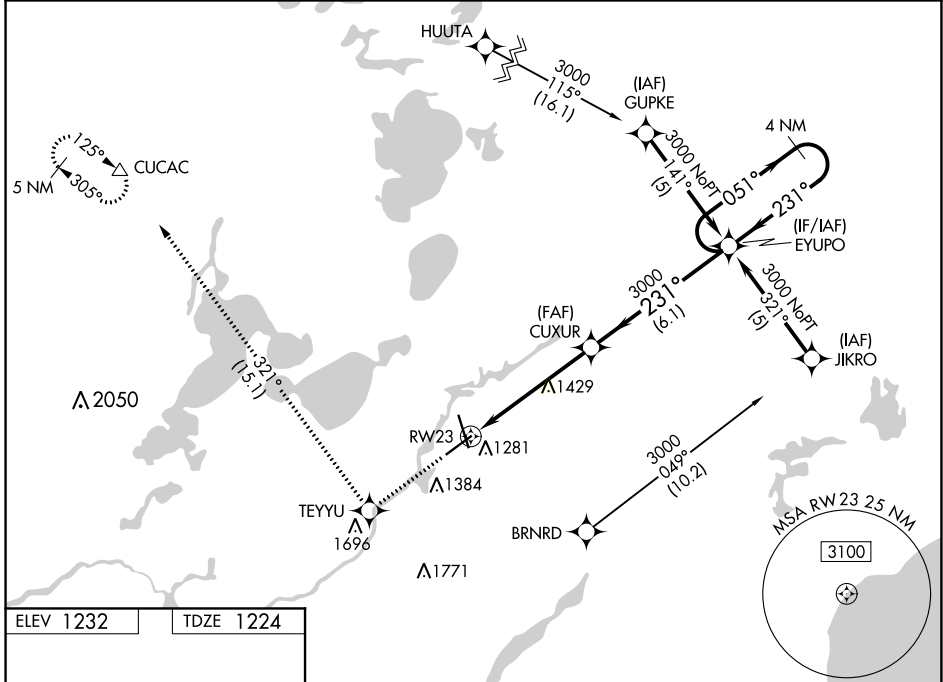
WAAS CH 82502 W23A	APP CRS 231°	Rwy Idg TDZE 1224 Apt Elev 1232
--	------------------------	---

RNAV (GPS) RWY 23

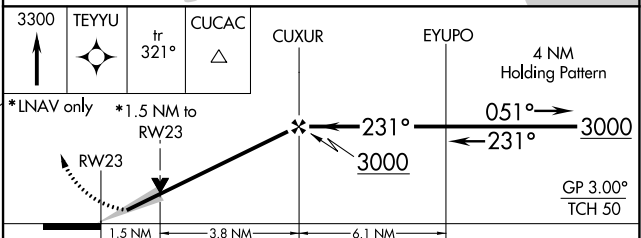
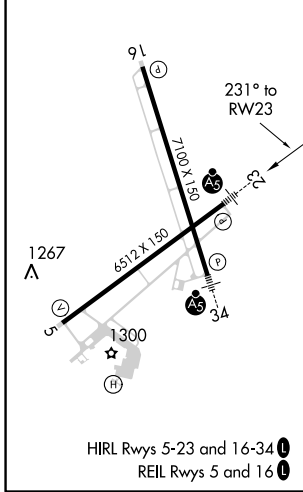
BRainerd LAKES RGNL (BRD)

RNP APCH. ▼ For uncompensated Baro-VNAV systems, LNAV/VNAV NA below -17°C or above 54°C. Baro-VNAV and VDP NA when using Aitkin altimeter setting. When local altimeter setting not received, use Aitkin altimeter setting and increase all DAs 52 feet and all MDAs 60 feet.	MALSR 	MISSED APPROACH: Climb to 3300 direct TEYU and on track 321° to CUCAC and hold.
--	-----------	---

ASOS 126.775	MINNEAPOLIS CENTER 118.05 239.0	UNICOM 122.7 (CTAF)
------------------------	---	-------------------------------



ELEV 1232	TDZE 1224
-----------	-----------



CATEGORY	A	B	C	D
LPV DA		1501-½	277 (300-½)	
LNAV/VNAV DA		1573-¾	349 (400-¾)	
LNAV MDA	1760-½	536 (600-½)	1760-1 536 (600-1)	1760-1½ 536 (600-1¼)
CIRCLING	1760-1	528 (600-1)	1760-1½ 528 (600-1½)	1860-2 628 (700-2)

NC-1, 25 MAR 2021 to 22 APR 2021

NC-1, 25 MAR 2021 to 22 APR 2021