

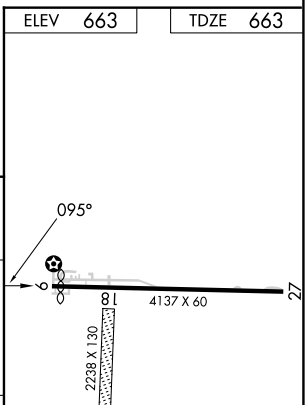
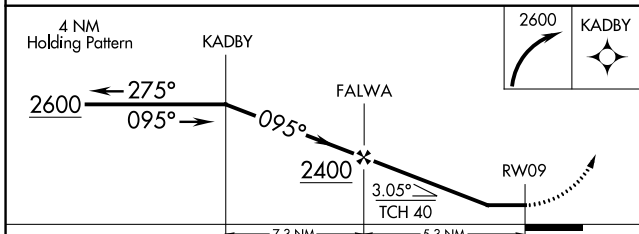
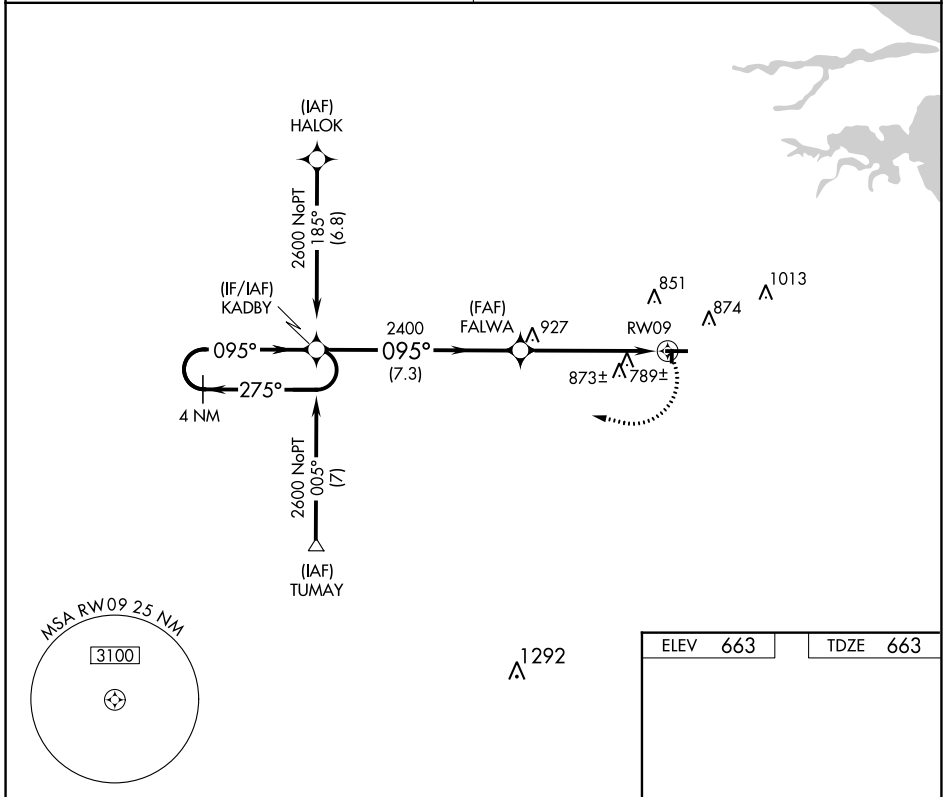
APP CRS	Rwy Idg	<b>4011</b>
<b>095°</b>	TDZE	<b>663</b>
	Apt Elev	<b>663</b>

# RNAV (GPS) RWY 9

FREMONT (14G)

RNP APCH.	MISSED APPROACH: Climbing right turn to 2600 direct KADBY and hold.
<p>Procedure NA at night. Use Sandusky County Rgnl altimeter setting; when not received use Toledo Executive altimeter setting; increase all MDA 40 feet and LNAV Cat D and Circling Cat C and D visibility ¼ SM. Rwy 9 helicopter visibility reduction below 1 SM NA. Circling NA to Rwys 18-36.</p>	

TOLEDO APP CON	UNICOM
<b>126.1 307.0</b>	<b>122.8 (CTAF) 0</b>



CATEGORY	A	B	C	D
LNAV MDA	1080-1	417 (500-1)	1080-1¼	417 (500-1¼)
CIRCLING	1240-1	577 (600-1)	1240-1½	1380-2¼
			577 (600-1½)	717 (800-2¼)

LURL Rwy 9-27 0\*

EC-2, 31 OCT 2024 to 28 NOV 2024

EC-2, 31 OCT 2024 to 28 NOV 2024