

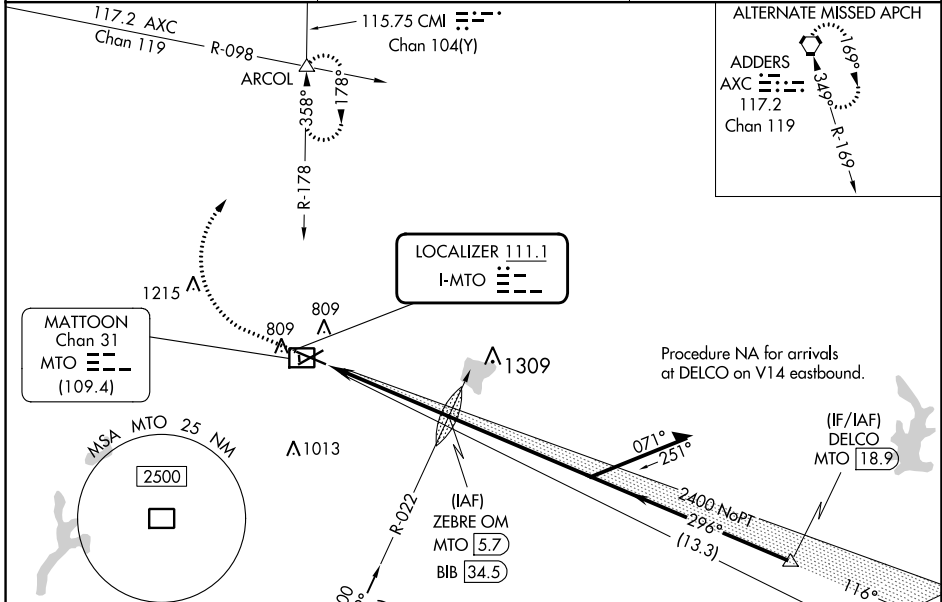
LOC I-MTO 111.1	APP CRS 296°	Rwy Idg TDZE Apt Elev	6501 718 722
---------------------------	------------------------	-----------------------------	---

ILS or LOC RWY 29

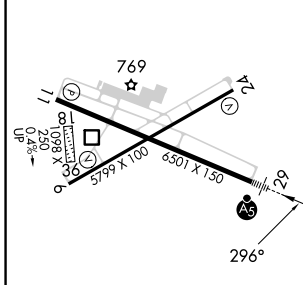
COLES COUNTY MEML (MTO)

DME required for procedure entry from BIB VORTAC.		MALSR 	MISSED APPROACH: Climb to 1200 then climbing right turn to 2500 on CMI R-178 to ARCOL INT and hold.
DME from MTO DME. Simultaneous reception of I-MTO and MTO DME required. Circling NA to Rwy 18 and 36.			

ASOS 118.475	CHAMPAIGN APP CON★ 132.85 290.225	UNICOM 122.7 (CTAF)
------------------------	---	-------------------------------



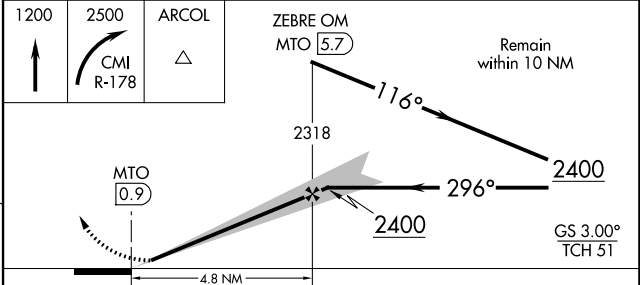
ELEV 722	D	TDZE 718
----------	----------	----------



MIRL Rwy 6-24
HIRL Rwy 11-29
REIL Rwys 6, 11, and 24

FAF to MAP 4.8 NM

Knots	60	90	120	150	180
Min:Sec	4:48	3:12	2:24	1:55	1:36



CATEGORY	A	B	C	D
S-ILS 29		918-1/2	200 (200-1/2)	
S-LOC 29	1160-1/2	442 (500-1/2)	1160-7/8	442 (500-7/8)
C CIRCLING	1160-1 438 (500-1)	1180-1 458 (500-1)	1240-1 1/2 518 (600-1 1/2)	1380-2 658 (700-2)

EC-3, 31 OCT 2024 to 28 NOV 2024

EC-3, 31 OCT 2024 to 28 NOV 2024