

LOC/DME I-DLG <b>111.9</b> Chan <b>56</b>	APP CRS <b>196°</b>	Rwy Idg <b>6400</b> TDZE <b>81</b> Apt Elev <b>82</b>
---	------------------------	---

# LOC RWY 19

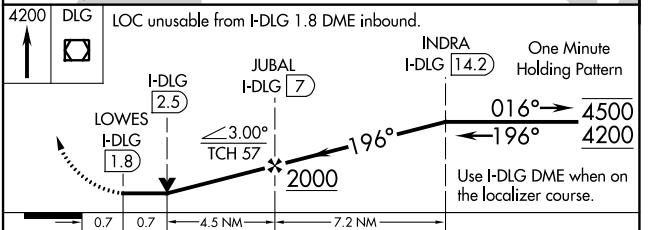
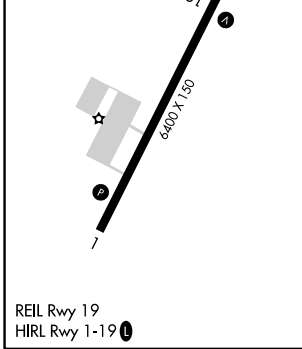
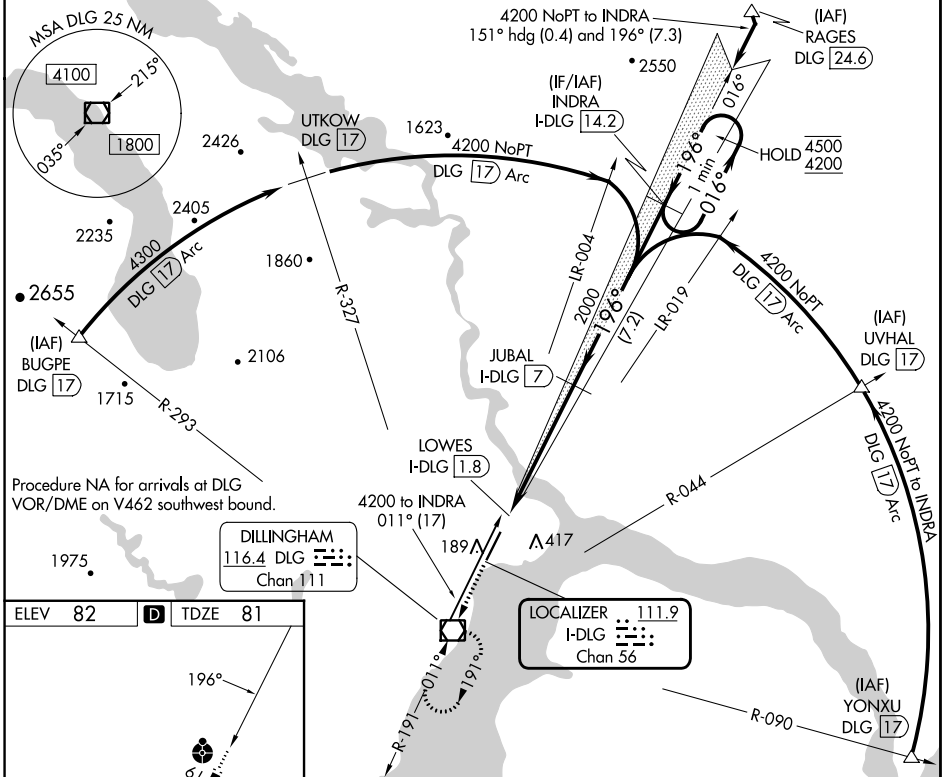
DILLINGHAM (DLG)(PADL)

**DME required.**

**⚠** Circling NA east of Rwy 1-19. VDP NA with Manokotak altimeter setting. When local altimeter setting not received, use Manokotak altimeter setting and increase all MDAs 40 feet and S-LOC 19 visibility Cat C/D 1/8 SM. Inop table does not apply to S-LOC 19 Cats A/B. Inop table does not apply when using Manokotak altimeter setting. Rwy 19 helicopter visibility reduction below 3/4 SM NA.

**ODALS** MISSED APPROACH: Climb to 4200 direct DLG VOR/DME and hold, continue climb-in-hold to 4200.

AFIS <b>125.0</b>	ANCHORAGE CENTER <b>132.75 282.35</b>	DILLINGHAM RADIO <b>123.6 (CTAF)</b>
----------------------	--	---



CATEGORY	A	B	C	D
S-LOC 19	560-1 479 (500-1)		560-1 1/4 479 (500-1 1/4)	
<b>C</b> CIRCLING	560-1 478 (500-1)		700-1 3/4 618 (700-1 3/4)	700-2 618 (700-2)

AK, 31 OCT 2024 to 26 DEC 2024

AK, 31 OCT 2024 to 26 DEC 2024