

VOR/DME ELY <b>113.95</b> Chan 86(Y)	APP CRS <b>179°</b>	Rwy Idg TDZE Apt Elev <b>N/A</b> <b>N/A</b> <b>6260</b>
--	------------------------	--

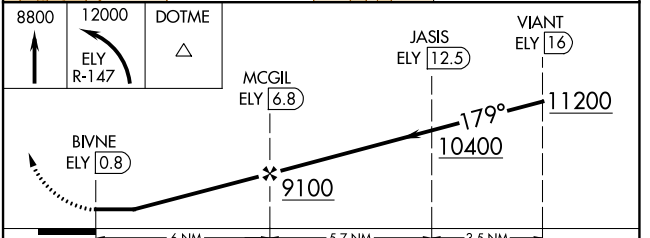
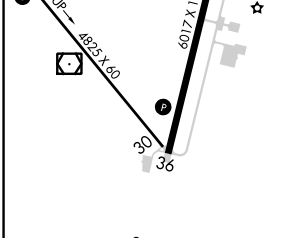
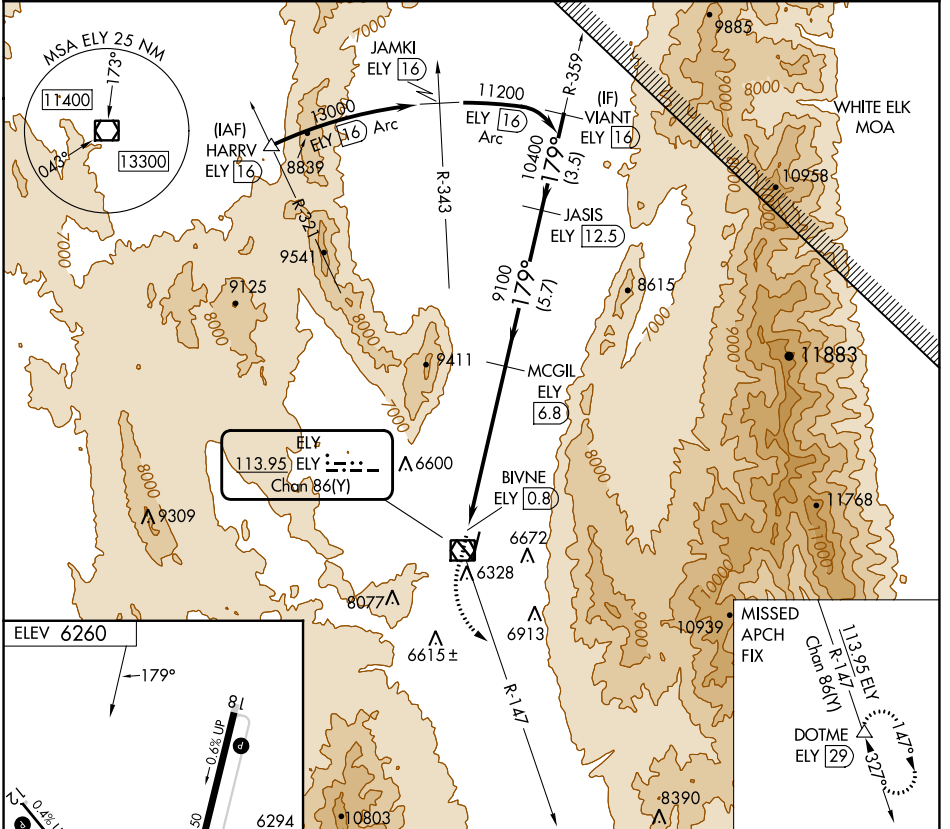
**VOR-C**  
ELY/YELLAND FLD (ELY)

DME required.

**▼** Rwy 30 helicopter visibility reduction below 1 SM NA. Circling Rwy 30 NA at night. Circling NA for Cats A and B southwest of Rwy 12 and west of Rwy 36. Circling NA for Cats C and D southwest of Rwy 12 and east of Rwy 18.

MISSED APPROACH: Climb to 8800 then climbing left turn to 12000 on ELY VOR/DME R-147 to DOTME/ELY 29 DME and hold.

ASOS <b>120.625</b>	SALT LAKE CENTER <b>133.45 317.625</b>	UNICOM <b>122.8 (CTAF) 0</b>
------------------------	---	---------------------------------



MIRL Rwy 12-30 0	HIRL Rwy 18-36 0	REIL Rwys 18 and 36 0		
CATEGORY	A	B	C	D
<b>C</b> CIRCLING	8060-1¼ 1800 (1800-1¼)	8060-1½ 1800 (1800-1½)	8060-3 1800 (1800-3)	8220-3 1960 (2000-3)

SW-4, 03 OCT 2024 to 31 OCT 2024

SW-4, 03 OCT 2024 to 31 OCT 2024