

# TACAN RWY 30

TACAN NSI Chan <b>39</b>	APCH CRS <b>292°</b>	Rwy ldg TDZE Arprt Elev <b>10,002</b> <b>506</b> <b>506</b>
-----------------------------	-------------------------	--

AL-51 62 [USN]

SAN NICOLAS ISLAND NOLF (KNSI)

RADAR required.  
 ▼ \*Circling not authorized W of Rwy 12-30.

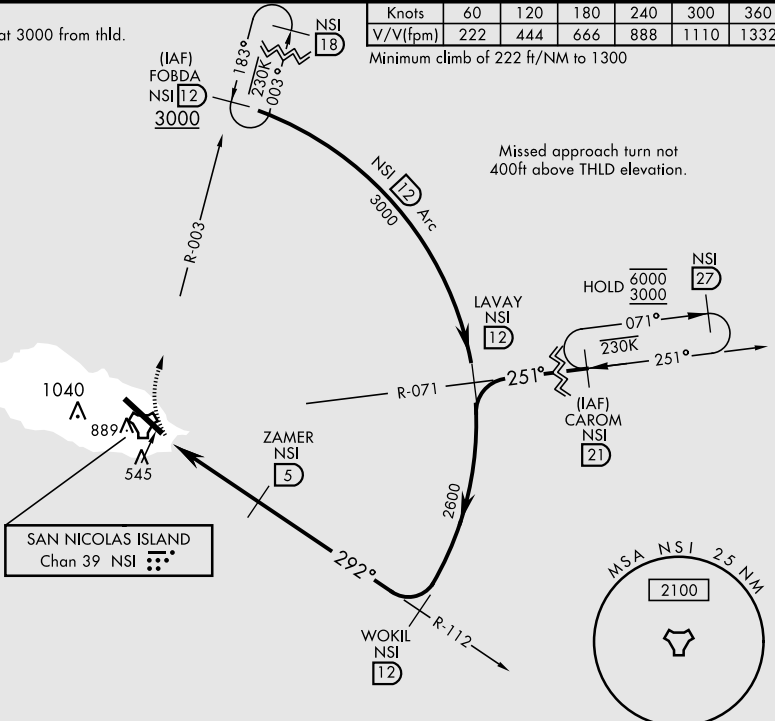
MISSED APPROACH: Climbing right turn to 3000, intcp the NSI TACAN R-003 to FOBDA and hold.

TOWER ★  
**126.85 379.3**

CAUTION:  
FAC 258° from RCL at 3000 from thld.

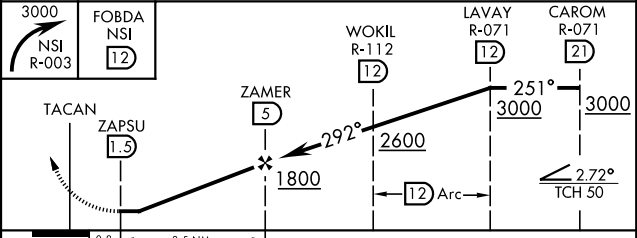
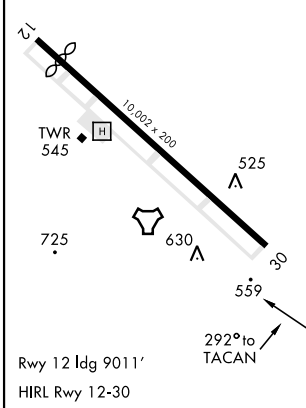
Knots	60	120	180	240	300	360
V/V(fpm)	222	444	666	888	1110	1332

Minimum climb of 222 ft/NM to 1300



ELEV 506	TDZE 506
----------	----------

EMERG SAFE ALT 100 NM 10,900



CATEGORY	A	B	C	D	E
S-30	820-1		314	(400-1)	
CIRCLING*	860-1 354 (400-1)	960-1 454 (500-1)	960-1½ 454 (500-1½)	1060-2 554 (600-2)	

# TACAN RWY 30

SW-3, 31 OCT 2024 to 28 NOV 2024

SW-3, 31 OCT 2024 to 28 NOV 2024