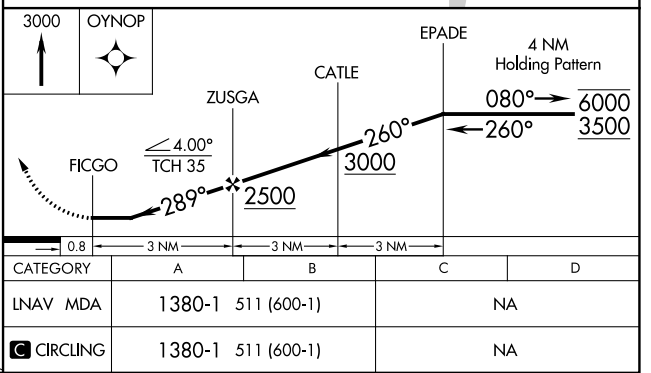
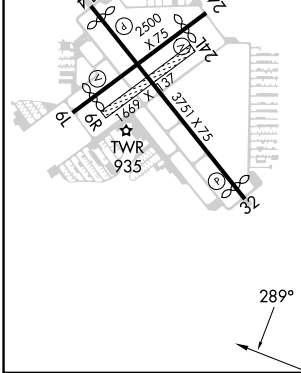
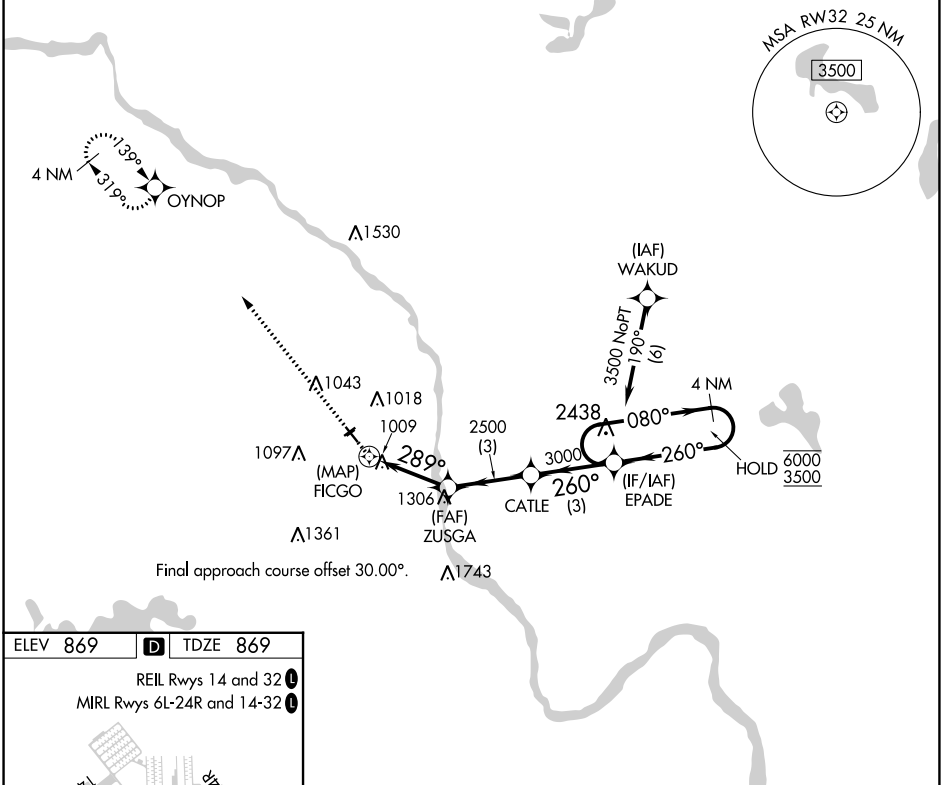


APP CRS	Rwy Idg	<b>3509</b>
<b>289°</b>	TDZE	<b>869</b>
	Apt Elev	<b>869</b>

# RNAV (GPS) RWY 32

CRYSTAL (MIC)

RNP APCH.		MISSED APPROACH: Climb to 3000 direct OYNOP and hold.						
<p><b>▼</b> Circling NA to Rwys 6R and 24L.</p> <p><b>▲</b> Rwy 32 helicopter visibility reduction below 3/4 SM NA.</p>		ATIS	MINNEAPOLIS APP CON	CRYSTAL TOWER*	GND CON	CLNC DEL	CLNC DEL	UNICOM
		<b>124.475</b>	<b>126.5 335.65</b>	<b>120.7 (CTAF) 0</b>	<b>121.6</b>	<b>121.6</b>	<b>121.6</b> (When twr closed)	<b>122.95</b>



NC-1, 03 OCT 2024 to 31 OCT 2024

NC-1, 03 OCT 2024 to 31 OCT 2024