

WAAS CH <b>48911</b> <b>W13A</b>	APP CRS <b>128°</b>	Rwy Idg TDZE Apt Elev	<b>4500</b> <b>1885</b> <b>1915</b>
--	------------------------	-----------------------------	---

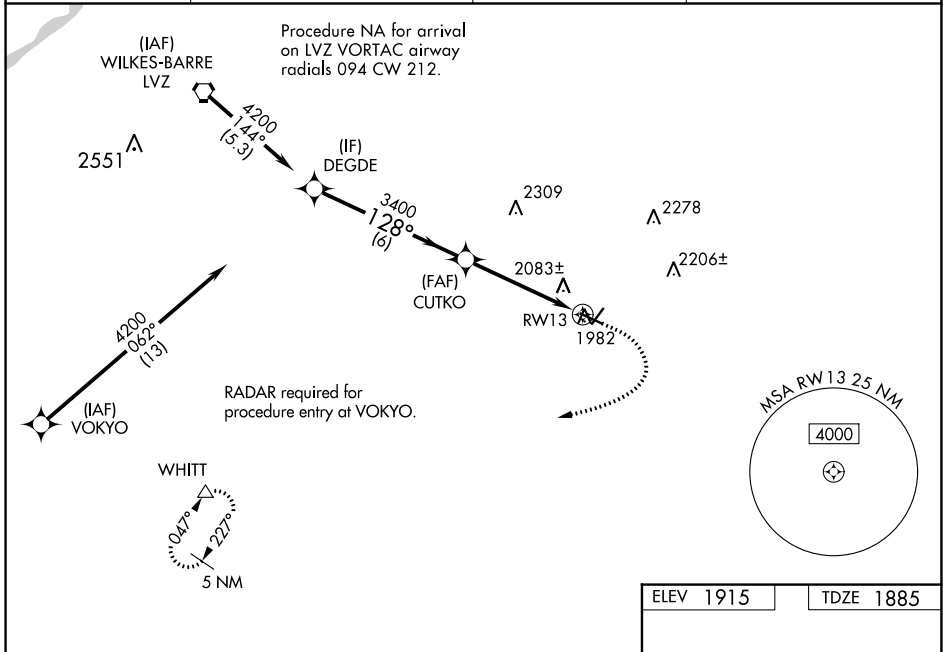
# RNAV (GPS) RWY 13

POCONO MOUNTAINS RGNL (MPO)

**▼** For uncompensated Baro-VNAV systems, LNAV/VNAV NA below -18° C (0° F) or above 54° C (130° F).  
**▲** Baro-VNAV and VDP NA when using Wilkes-Barre/Scranton altimeter setting. Rwy 13 helicopter visibility reduction below 3/4 SM NA. DME/DME RNP-0.3 NA. When local altimeter setting not received, use Wilkes-Barre/Scranton altimeter setting: increase LPV DA to 2450 feet, LNAV/VNAV DA to 2537 feet and all visibilities 1/2 SM; increase all MDAs 180 feet and visibility LNAV Cat C/D 3/8 SM and Circling Cat C/D 1/2 SM. Circling Rwy 23 NA at night.

**MISSED APPROACH:** Climb to 3000 then climbing right turn to 4200 direct WHITT and hold.

ASOS <b>120.275</b>	WILKES-BARRE APP CON <b>126.3 256.7</b>	CLNC DEL <b>125.3</b>	UNICOM <b>122.7 (CTAF) 0</b>
------------------------	--	--------------------------	---------------------------------



NE-4, 31 OCT 2024 to 28 NOV 2024

NE-4, 31 OCT 2024 to 28 NOV 2024

<p>Procedure NA for arrival on LVZ VORTAC airway radials 094 CW 212.</p>		<p>ELEV 1915      TDZE 1885</p>	
<p>GP 3.00° TCH 40</p>		<p>3000    4200    WHITT ↑      ↘      △</p>	
<p>VGSI and RNAV glidepath not coincident (VGSI Angle 3.00/TCH 44).</p>		<p>* LNAV only.</p>	
<p>4200      3400      3000</p> <p>128°</p> <p>6 NM      3.3 NM      1.3 NM</p>		<p>*1.3 NM to RWY 13</p>	
CATEGORY	A	B	C
LPV DA	2271-1 1/4		386 (400-1 1/4)
LNAV/VNAV DA	2358-1 1/2		473 (500-1 1/2)
LNAV MDA	2340-1	455 (500-1)	2340-1 3/8    455 (500-1 3/8)
CIRCLING	2420-1 505 (600-1)	2500-1 585 (600-1)	2600-2 685 (700-2)    2660-2 1/2 745 (800-2 1/2)
<p>REIL Rws 5, 13, 23, and 31 0</p>		<p>MIRL Rws 5-23 and 13-31 0</p>	