

| | | | |
|--|------------------------|-----------------------------|---|
| WAAS CH 50511 W28A | APP CRS 276° | Rwy Idg TDZE Apt Elev | 6000 975 975 |
|--|------------------------|-----------------------------|---|

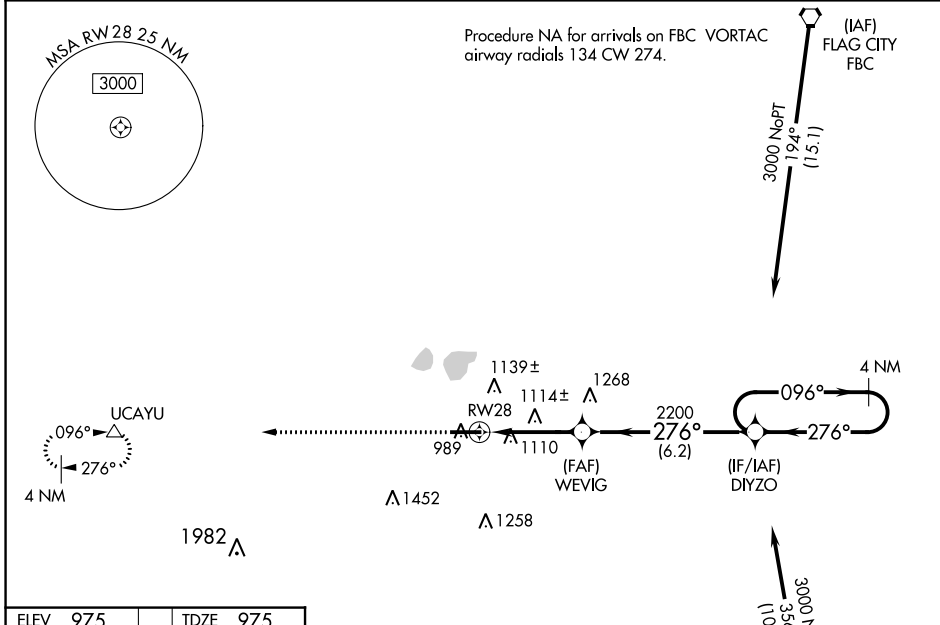
RNAV (GPS) RWY 28

LIMA ALLEN COUNTY (AOH)

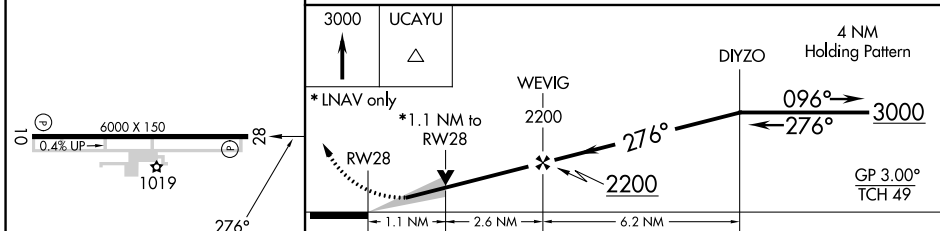
⚠ Baro-VNAV NA when using Findlay altimeter setting. For uncompensated Baro-VNAV systems, LNAV/VNAV NA below -16°C (4°F) or above 37°C (98°F). When local altimeter setting not received, use Findlay altimeter setting and increase LPV DA to 1255, LNAV/VNAV DA to 1477 and all MDAs 80 feet; increase LPV all Cats visibility 1/8 SM, LNAV/VNAV all Cats, LNAV Cats C/D and Circling Cats C/D 1/4 SM. DME/DME RNP-0.3 NA. VDP NA with Findlay altimeter setting.

MISSED APPROACH:
Climb to 3000 direct UCAYU and hold.

| | | |
|------------------------|---|---------------------------------|
| ASOS 128.725 | COLUMBUS APP CON 121.825 323.15 | UNICOM 122.7 (CTAF) 0 |
|------------------------|---|---------------------------------|



| | |
|----------|----------|
| ELEV 975 | TDZE 975 |
|----------|----------|



| CATEGORY | A | B | C | D |
|--------------|-----------------------|-----------------------|-------------------------------|-------------------------------|
| LPV DA | | 1175-3/4 | 200 (200-3/4) | |
| LNAV/VNAV DA | | 1397-1 3/8 | 422 (500-1 3/8) | |
| LNAV MDA | 1380-1 | 405 (500-1) | 1380-1 1/8 | 405 (500-1 1/8) |
| CIRCLING | 1420-1 445 (500-1) | 1440-1 465 (500-1) | 1540-1 1/2 565 (600-1 1/2) | 1820-2 3/4 845 (900-2 3/4) |

LIMA, OHIO
Amdt 2C 02DEC21

40°42'N-84°02'W

RNAV (GPS) RWY 28

EC-2, 31 OCT 2024 to 28 NOV 2024

EC-2, 31 OCT 2024 to 28 NOV 2024