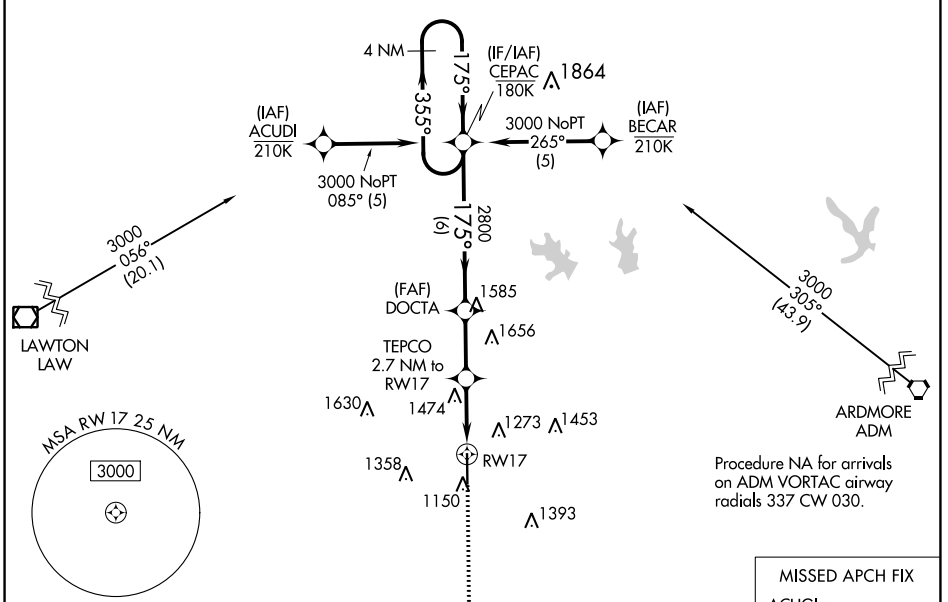


WAAS CH <b>93619</b> <b>W17A</b>	APP CRS <b>175°</b>	Rwy Idg <b>6325</b> TDZE <b>1114</b> Apt Elev <b>1114</b>
--	------------------------	---

# RNAV (GPS) RWY 17

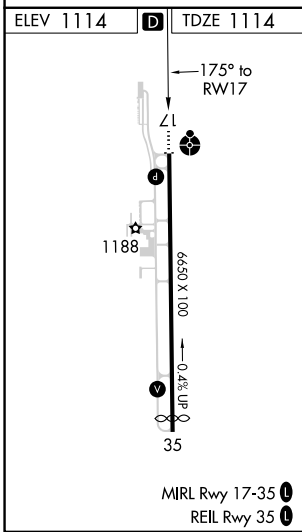
HALLIBURTON FLD (DUC)

<b>RNP APCH.</b> For uncompensated Baro-VNAV systems, LNAV/VNAV NA below -17°C or above 54°C. Inop table does not apply to LPV all Cats, LNAV/VNAV all Cats, LNAV Cats C/D.		<b>ODALS</b> 	<b>MISSED APPROACH:</b> Climb to 3000 direct ACUGI and hold.
AWOS-3 <b>119.075</b>	FORT SILL APP CON <b>118.6 290.375</b>	CLNC DEL <b>118.4</b>	UNICOM <b>122.8 (CTAF) 0</b>



SC-1, 31 OCT 2024 to 28 NOV 2024

SC-1, 31 OCT 2024 to 28 NOV 2024



MISSED APCH FIX ACUGI 	
3000 ACUGI *LNAV only. *1.8 NM to RWY 17 *2020 RWY 17 1.8 NM 0.9 NM 2.4 NM 6 NM	CEPAC 4 NM Holding Pattern DOCTA 2800 TEPCO 2.7 NM to RWY 17 355° 175° 3000 GP 3.00° TCH 53
CATEGORY LPV DA LNAV/VNAV DA LNAV MDA CIRCLING	A B C D
1314-3/4 1806-2 1/2 1740-3/4 626 (700-3/4) 1740-1 626 (700-1)	200 (200-3/4) 692 (700-2/2) 1740-1 3/4 626 (700-1 3/4) 1780-1 3/4 666 (700-1 3/4) 1780-2 666 (700-2)