

LOC I-JAN 110.5	APP CRS 159°	Rwy Idg TDZE Apt Elev	8500 312 346
---------------------------	------------------------	-----------------------------	---

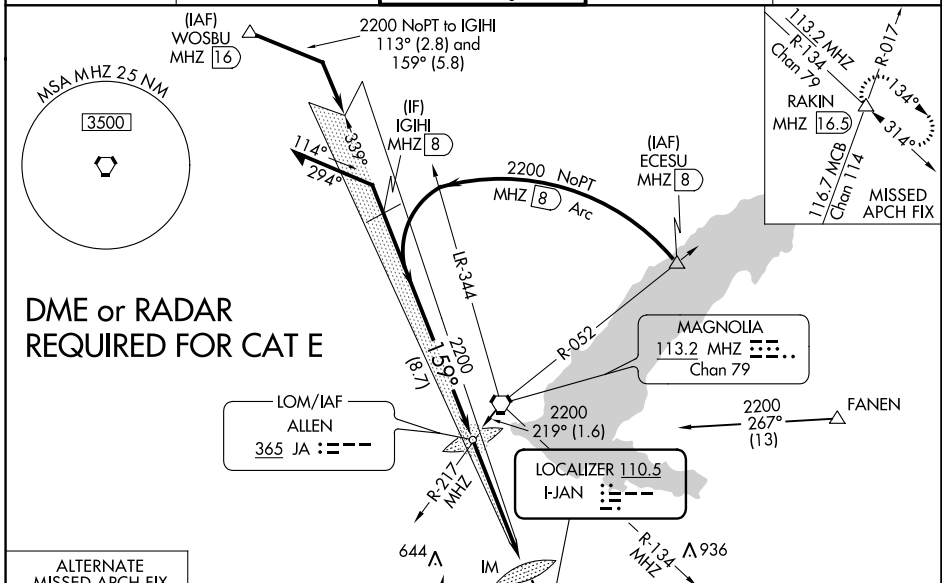
ILS or LOC RWY 16L

JACKSON-MEDGAR WILEY EVERS INTL (JAN)

ASR Circling NA for Cat E southwest of Rwy 16R-34L. When local altimeter setting not received, use Hawkins Fld altimeter setting and increase all DA 19 feet and all MDA 20 feet. For inop ALS, increase S-ILS 16L Cat E visibility to RVR 4000 and increase S-LOC 16L Cats C/D/E visibility to 1 $\frac{3}{8}$ SM. For inop ALS when using Hawkins Fld altimeter setting, increase S-ILS 16L Cat E visibility to RVR 4000 and increase S-LOC 16L Cats C/D/E visibility to 1 $\frac{1}{2}$ SM. Procedure turn NA for Cat E.

ALS-F-2 MISSED APPROACH: Climb to 800 then climbing left turn to 3000 on heading 090° and MHZ VORTAC R-134 to RAKIN INT/16.5 DME and hold.

ATIS 121.05	JACKSON APP CON * 123.9 317.7	JACKSON TOWER * 120.9 (CTAF) 352.0	GND CON 121.7 348.6	UNICOM 122.95
-----------------------	---	--	-------------------------------	-------------------------



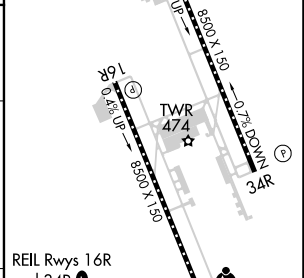
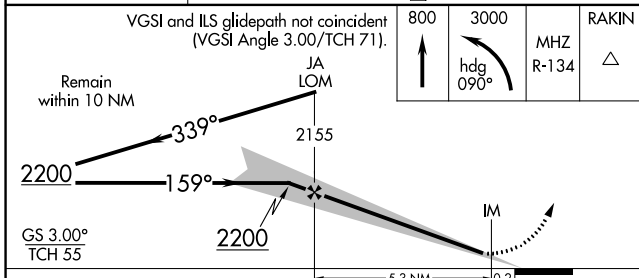
DME or RADAR REQUIRED FOR CAT E

SC-4, 03 OCT 2024 to 31 OCT 2024

SC-4, 03 OCT 2024 to 31 OCT 2024



ELEV	346	TDZE	312
			159° 5.5 NM from FAF



CATEGORY	A	B	C	D	E	
S-ILS 16L	512/18 200 (200- $\frac{1}{2}$)					
S-LOC 16L	820/24	508 (500- $\frac{1}{2}$)	820/55		508 (500-1)	
CIRCLING	880-1	900-1	900-1 $\frac{1}{2}$	960-2	1040-2 $\frac{1}{2}$	
	534 (600-1)	554 (600-1)	554 (600-1 $\frac{1}{2}$)	614 (700-2)	694 (700-2 $\frac{1}{2}$)	
	FAF to MAP 5.5 NM					
	Knots	60	90	120	150	180
	Min:Sec	5:30	3:40	2:45	2:12	1:50