

# BWALL TWO DEPARTURE (RNAV)

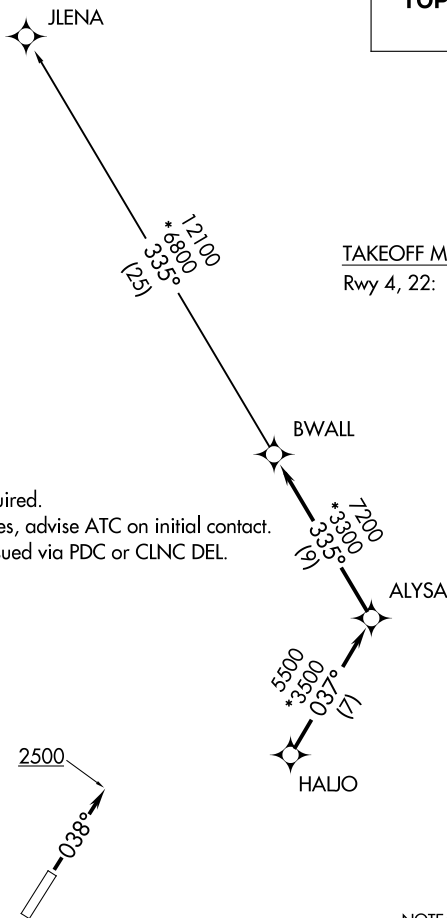
GREENVILLE SPARTANBURG INTL (GSP)  
GREER, SOUTH CAROLINA

ATIS  
134.25  
GND CON  
121.9  
GREER TOWER\*  
120.1 251.15  
UNICOM  
122.95  
GREER DEP CON\*  
119.4 350.2

**TOP ALTITUDE:  
5000**

TAKEOFF MINIMUMS  
Rwy 4, 22: Standard.

- NOTE: For turbojets only.
- NOTE: RNAV 1.
- NOTE: RADAR required.
- NOTE: DME/DME/IRU or GPS required.
- NOTE: If unable to accept climb rates, advise ATC on initial contact.
- NOTE: Transponder code will be issued via PDC or CLNC DEL.



NOTE: Chart not to scale.



## DEPARTURE ROUTE DESCRIPTION

TAKEOFF ALL RUNWAYS: Climb on assigned heading for RADAR vectors to HALJO, then on depicted route to BWALL, thence. . . .

. . . .on JLENA transition. Maintain 5000. Expect clearance to filed altitude within 10 minutes after departure.

TAKEOFF RUNWAY 4: Climb heading 038° to 2500 before turning left.

JLENA TRANSITION (BWALL2.JLENA)