

VOR/DME ESC 113.55 Chan 82 (Y)	APP CRS 351°	Rwy Idg 5015 TDZE 600 Apt Elev 609
--	------------------------	---

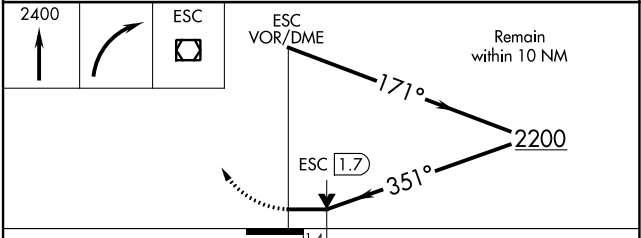
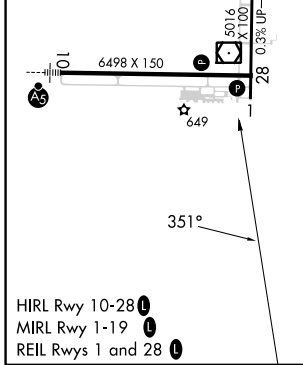
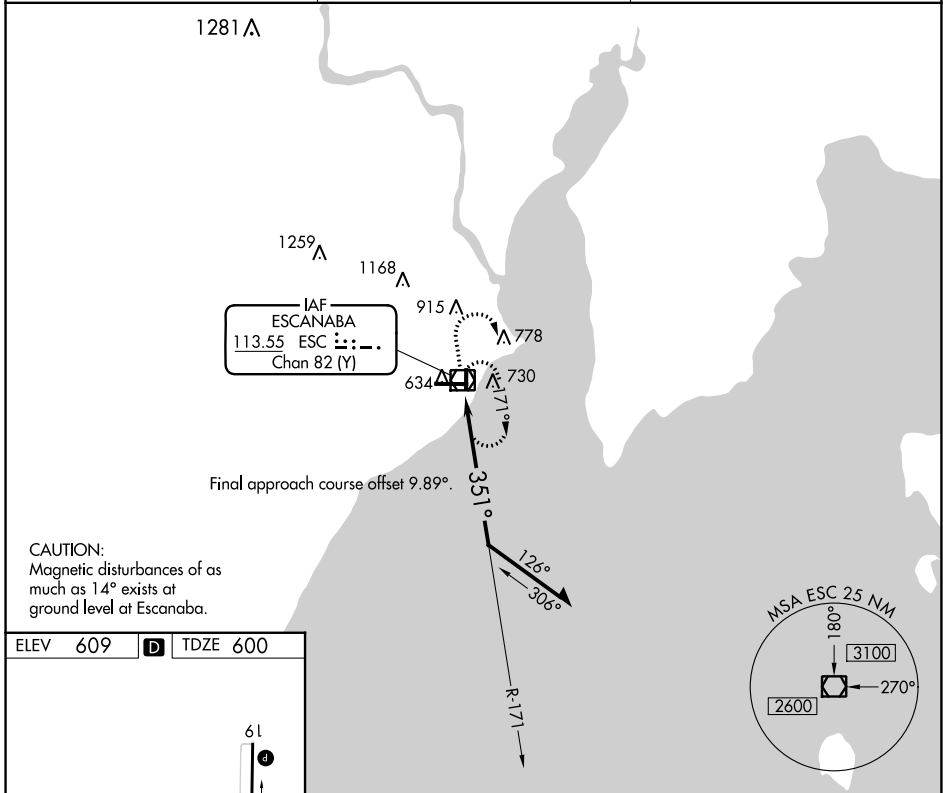
VOR RWY 1

DELTA COUNTY (ESC)

⚠ Rwy 1 helicopter visibility reduction below 3/4 SM NA.

⚠ MISSED APPROACH: Climb to 2400 then right turn direct ESC VOR/DME and hold.

AWOS-3PT 121.425	MINNEAPOLIS CENTER 127.65	UNICOM 122.8 (CTAF)
----------------------------	-------------------------------------	-------------------------------



CATEGORY	A	B	C	D
S-1	1080-1 480 (500-1)		1080-1 ³ / ₈ 480 (500-1 ³ / ₈)	
C CIRCLING	1080-1 471 (500-1)		1280-2 671 (700-2)	1480-2 ³ / ₄ 871 (900-2 ³ / ₄)

EC-1, 31 OCT 2024 to 28 NOV 2024

EC-1, 31 OCT 2024 to 28 NOV 2024