

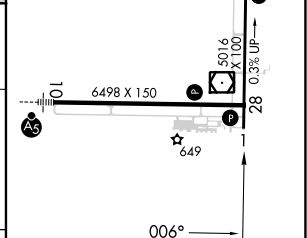
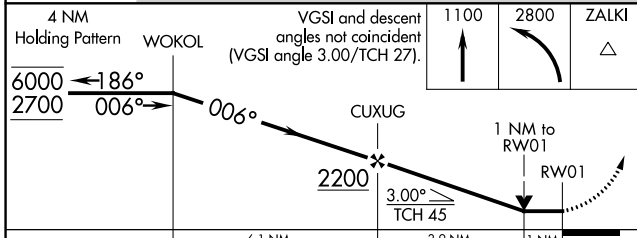
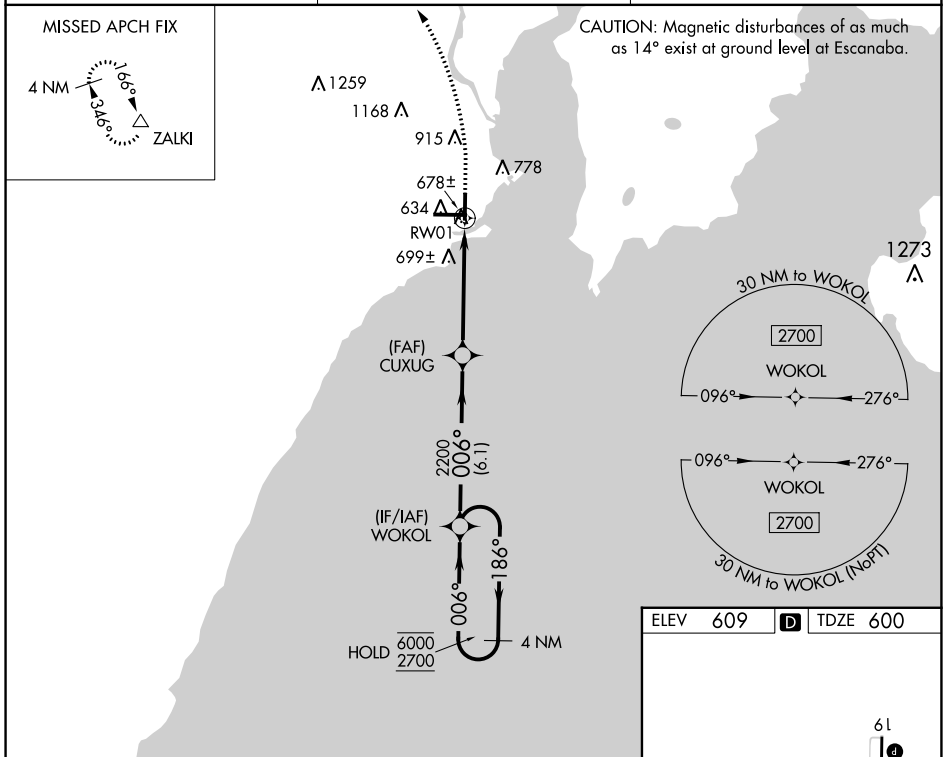
WAAS CH 69333 W01A	APP CRS 006°	Rwy Idg TDZE Apt Elev	5015 600 609
--	------------------------	-----------------------------	---

RNAV (GPS) RWY 1

DELTA COUNTY (E/S C)

RNP APCH - GPS.	MISSED APPROACH: Climb to 1100, then climbing left turn to 2800 direct ZALKI and hold.
<p>▼</p> <p>▲ Rwy 1 helicopter visibility reduction below 3/4 SM NA.</p>	

AWOS-3PT 121.425	MINNEAPOLIS CENTER 127.65	UNICOM 122.8 (CTAF) 0
----------------------------	-------------------------------------	---------------------------------



CATEGORY	A	B	C	D
LP MDA		940-1	340 (400-1)	
LNAV MDA		960-1	360 (400-1)	
CIRCLING	1060-1 451 (500-1)	1080-1 471 (500-1)	1280-2 671 (700-2)	1480-2 3/4 871 (900-2 3/4)

ELEV	609	TDZE	600
HIRL Rwy 10-28	0	MIRL Rwy 1-19	0
REIL Rwy 1 and 28	0		

EC-1, 31 OCT 2024 to 28 NOV 2024

EC-1, 31 OCT 2024 to 28 NOV 2024