

APP CRS	Rwy Idg	4421
315°	TDZE	667
	Apt Elev	674

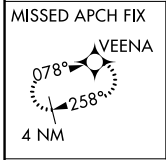
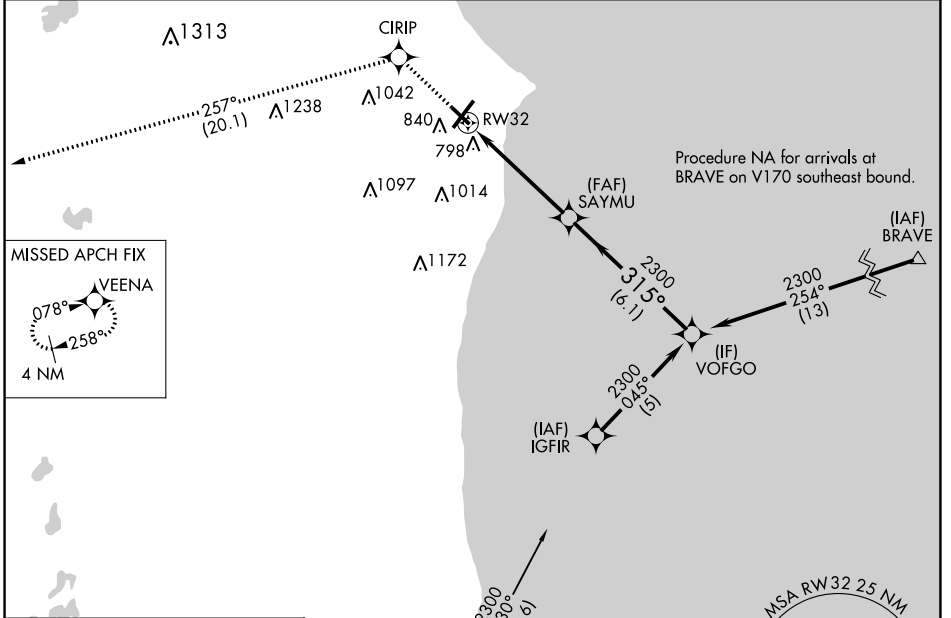
RNAV (GPS) RWY 32

BATTEN INTL (RAC)

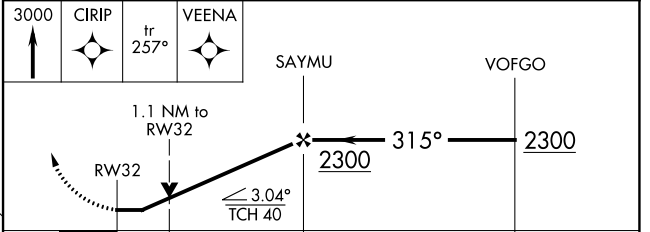
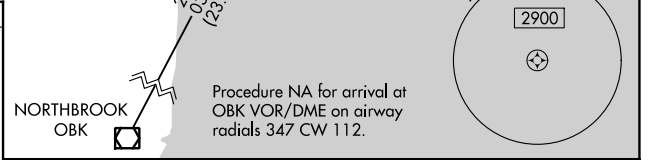
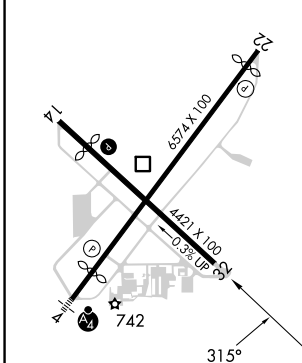
▼ DME/DME RNP-0.3 NA. VDP NA when using General Mitchell Intl altimeter setting.
▲ When local altimeter setting not received, use General Mitchell Intl altimeter setting:
 Increase all MDA 40 feet and visibility Cat C and D ¼ SM. Rwy 32 helicopter
 visibility reduction below ¾ SM NA. Circling Rwy 14 NA at night.

MISSED APPROACH:
 Climb to 3000 direct
 CIRIP and track 257°
 to VEENA and hold.

ASOS 121.425	MILWAUKEE APP CON 135.875 317.725	CLNC DEL 120.15	UNICOM 123.075 (CTAF) 0
------------------------	---	---------------------------	-----------------------------------



ELEV 674	TDZE 667
----------	----------



	A	B	C	D
CATEGORY	A	B	C	D
LNAV MDA	1060-1	393 (400-1)	1060-1½	393 (400-1½)
C CIRCLING	1140-1 466 (500-1)	1160-1 486 (500-1)	1380-2 706 (800-2)	1380-2¼ 706 (800-2¼)

HIRL Rwy 4-22
 MIRL Rwy 14-32
 REIL Rwy 14, 22 and 32

EC-3, 31 OCT 2024 to 28 NOV 2024

EC-3, 31 OCT 2024 to 28 NOV 2024