

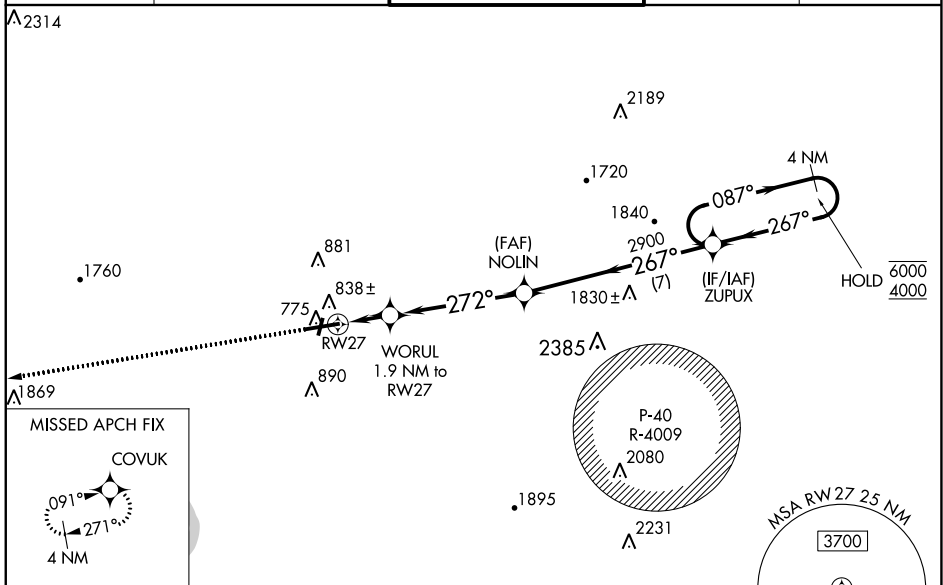
WAAS CH 86911 W27A	APP CRS 272°	Rwy ldg TDZE Apt Elev	7000 701 703
--	------------------------	-----------------------------	---

RNAV (GPS) RWY 27

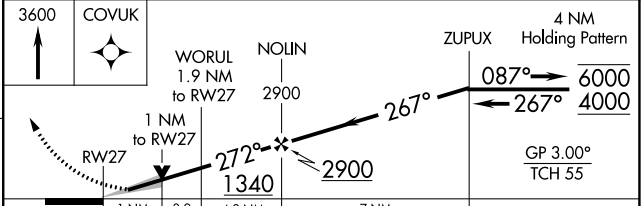
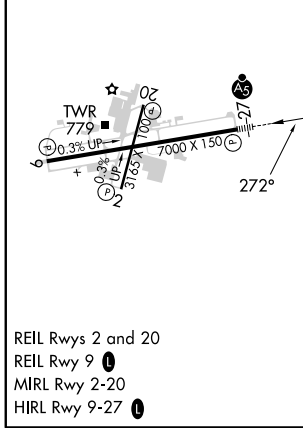
HAGERSTOWN RGNL/RICHARD A HENSON FLD (HGR)

RNP APCH - GPS.		MALSR	MISSED APPROACH: Climb to 3600 direct COVUK and hold, continue climb-in-hold to 3600.
<p>⚠ For uncompensated Baro-VNAV systems, LNAV/VNAV NA below -13°C or above 54°C.</p>			

ASOS 126.375	POTOMAC APP CON 126.825 239.025	HAGERSTOWN TOWER * 120.3 (CTAF) 0 225.4	GND CON 120.8	UNICOM 122.95
------------------------	---	---	-------------------------	-------------------------



ELEV 703	D	TDZE 701
----------	----------	----------



CATEGORY	A	B	C	D
LPV DA	901-1/2		200 (200-1/2)	
LNAV/VNAV DA	986-1/2		285 (300-1/2)	
LNAV MDA	1060-1/2	359 (400-1/2)	1060-5/8	359 (400-5/8)
C CIRCLING	1160-1	457 (500-1)	1200-1 1/2 497 (500-1 1/2)	1300-2 597 (600-2)

NE-3, 08 AUG 2024 to 05 SEP 2024

NE-3, 08 AUG 2024 to 05 SEP 2024