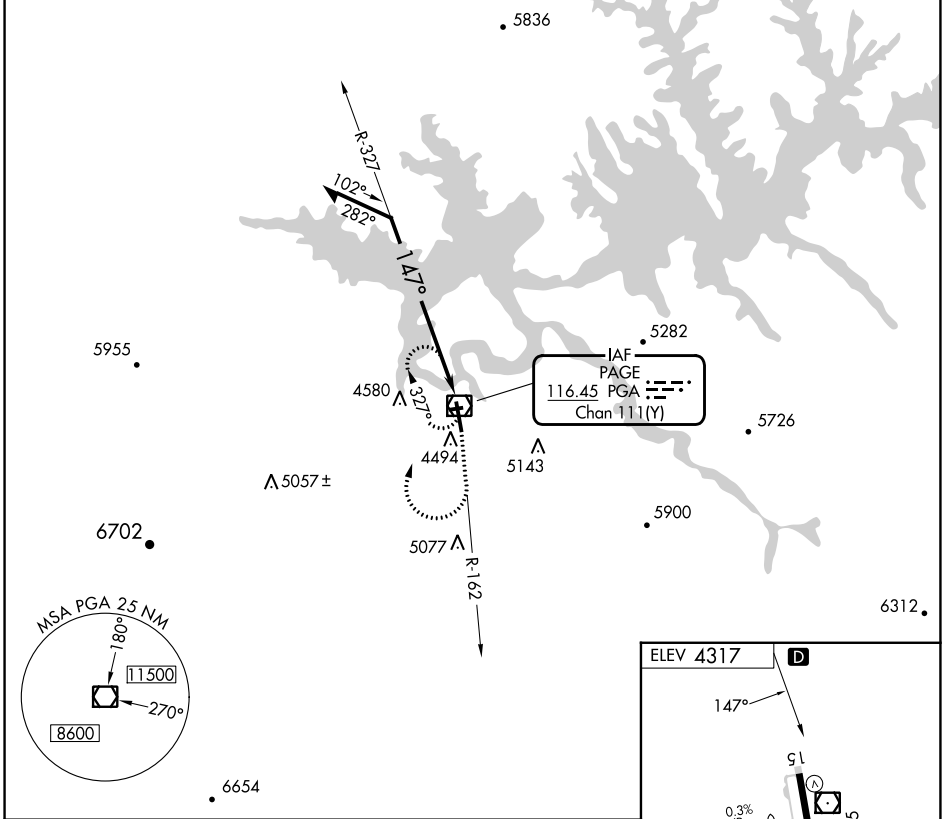


VOR/DME PGA <b>116.45</b> Chan <b>111(Y)</b>	APP CRS <b>147°</b>	Rwy Idg TDZE Apt Elev <b>N/A</b> <b>N/A</b> <b>4317</b>
--	------------------------	--

**VOR-B**  
PAGE MUNI (PGA)

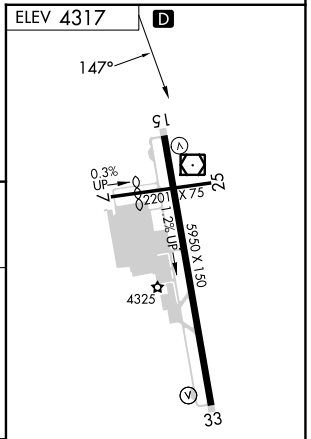
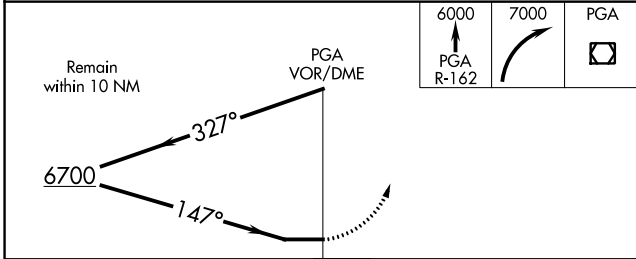
<b>NA</b> Circling NA to Rwy 7-25.	MISSED APPROACH: Climb on the PGA R-162 to 6000, then climbing right turn to 7000 direct PGA VOR/DME and hold.
------------------------------------	--

ASOS <b>120.625</b>	DENVER CENTER <b>127.55 256.875</b>	UNICOM <b>122.8 (CTAF)</b>
------------------------	--	-------------------------------



SW-4, 31 OCT 2024 to 28 NOV 2024

SW-4, 31 OCT 2024 to 28 NOV 2024



CATEGORY	A	B	C	D
CIRCLING	5200-1¼	883 (900-1¼)	5200-2¾ 883 (900-2¾)	5360-3 1043 (1100-3)

REIL Rwy 15 and 33  
MIRL Rwy 15-33