

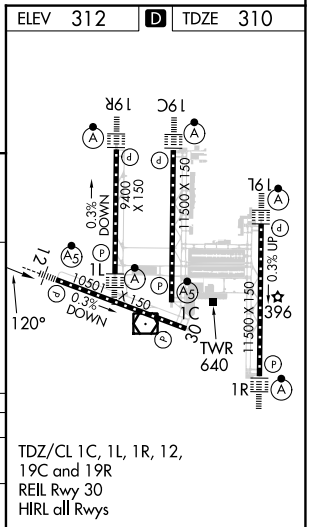
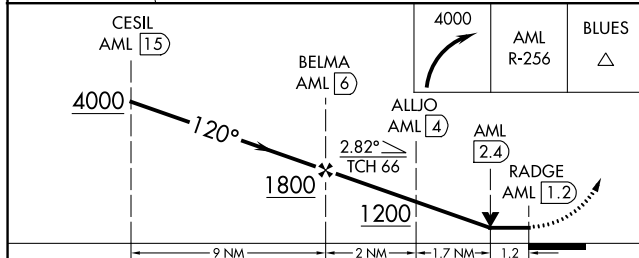
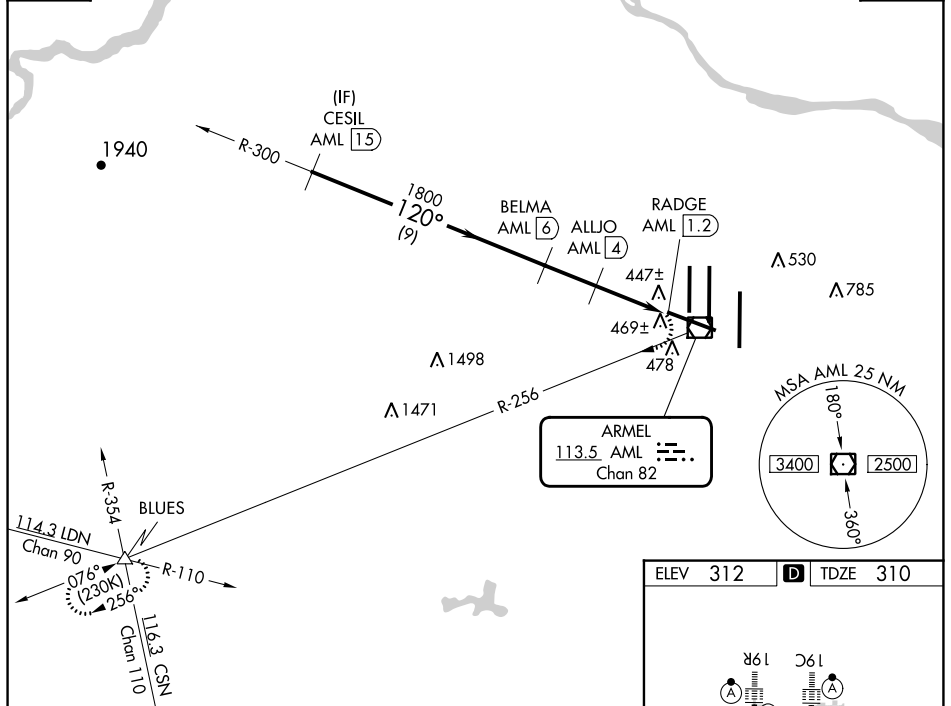
VOR/DME AML 113.5 Chan 82	APP CRS 120°	Rwy Idg TDZE Apt Elev	10501 310 312
-----------------------------------------------	------------------------	-----------------------------	------------------------------------------

VOR/DME RWY 12

WASHINGTON DULLES INTL (IAD)

▼ ▲	MALSR 	MISSED APPROACH: Climbing right turn to 4000 on AML VOR/DME R-256 to BLUES INT and hold.	
		POTOMAC APP CON 120.45 306.925 (241°-330°) 128.525 306.925 (091°-240°) 126.1 338.25 (331°-090°)	DULLES TOWER 120.1 317.8 (Rwy 1R/19L) 120.25 348.6 (Rwy 1C/19C) 134.425 348.6 (Rwys 1L/19R and 12/30)

D-ATIS 134.85	RADAR REQUIRED	CPDLC
-------------------------	-----------------------	-------



CATEGORY	A	B	C	D
S-12	740/24 430 (500-½)		740/40 430 (500-¾)	
CIRCLING	940-1 628 (700-1)		940-1¾ 628 (700-1¾)	1180-2¾ 868 (900-2¾)

NE-3, 08 AUG 2024 to 05 SEP 2024

NE-3, 08 AUG 2024 to 05 SEP 2024