

# SELINGSGROVE SIX ARRIVAL

POTOMAC APP CON  
133.0 288.35  
D-ATIS  
134.85  
DULLES TOWER  
120.1 317.8 (Rwy 1R/19L)  
120.25 348.6 (Rwy 1C/19C)  
134.425 348.6 (1L/19R, 12/30)

WILLIAMSPORT  
114.4 FQM Chan 91

PHILIPSBURG  
115.5 PSB Chan 102

MARTINSBURG  
112.1 MRB Chan 58

FREDERICK  
109.0 (T) FDK

MAA 17500  
6000  
\*4400  
198° (18)

WATSO  
6000  
\*3800  
197° (15)

PRTZL  
6000  
\*3800  
201° (31)

HYPER  
Expect 8000  
210K  
065°

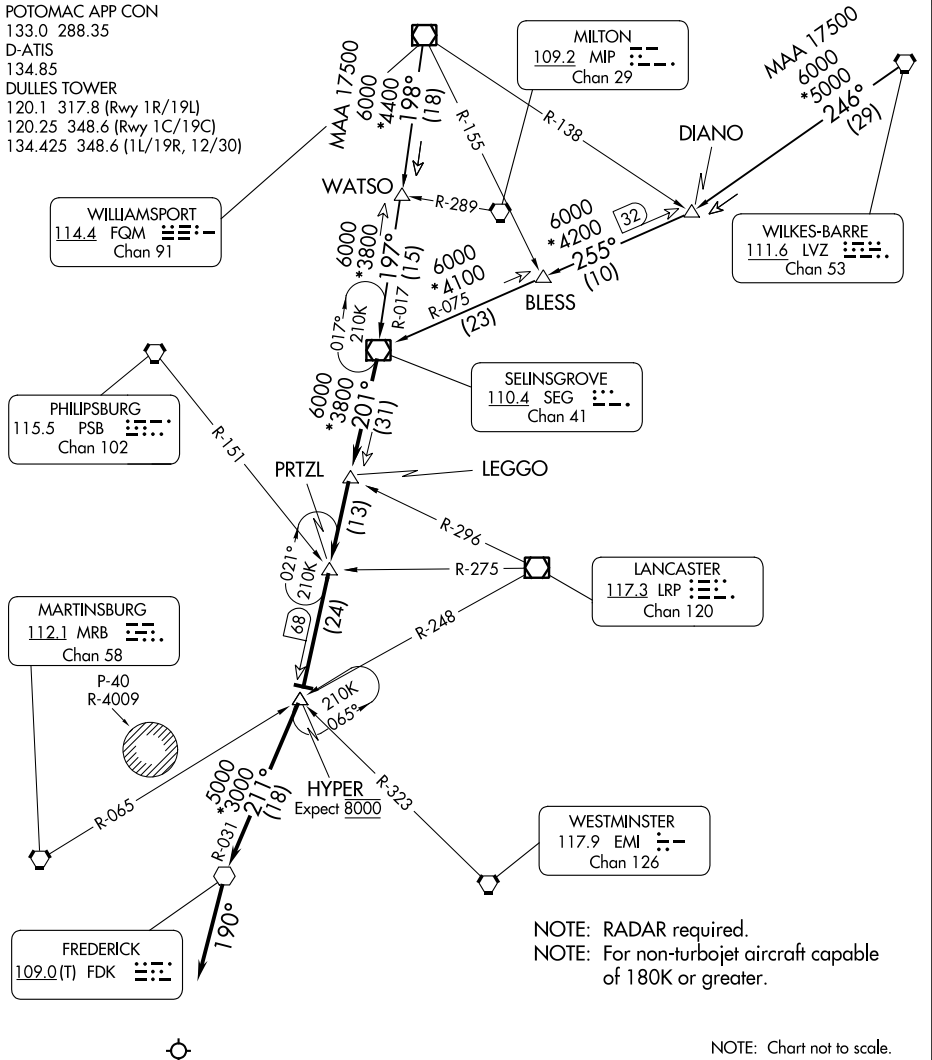
MILTON  
109.2 MIP Chan 29

WILKES-BARRE  
111.6 LVZ Chan 53

SELINGSGROVE  
110.4 SEG Chan 41

LANCASTER  
117.3 LRP Chan 120

WESTMINSTER  
117.9 EMI Chan 126



NOTE: RADAR required.  
NOTE: For non-turbojet aircraft capable of 180K or greater.

NOTE: Chart not to scale.

## ARRIVAL ROUTE DESCRIPTION

**WILKES-BARRE TRANSITION (LVZ.SEG6):**  
From over LVZ VORTAC on LVZ R-246 and SEG R-075 to SEG VOR/DME. Thence....

**WILLIAMSPORT TRANSITION (FQM.SEG6):**  
From over FQM VOR/DME on FQM R-198 and SEG R-017 to SEG VOR/DME. Thence....

....From SEG VOR/DME on SEG R-201 to LEGGO, then on SEG R-201 to PRTZL, then on SEG R-201 to HYPER, then on FDK R-031 to FDK VOR, then on heading 190° or as assigned by ATC. Expect RADAR vectors to final approach course.

# SELINGSGROVE SIX ARRIVAL

NE-3, 03 OCT 2024 to 31 OCT 2024

NE-3, 03 OCT 2024 to 31 OCT 2024