

APP CRS	Rwy Idg	<b>10501</b>
<b>301°</b>	TDZE	<b>288</b>
	Apt Elev	<b>312</b>

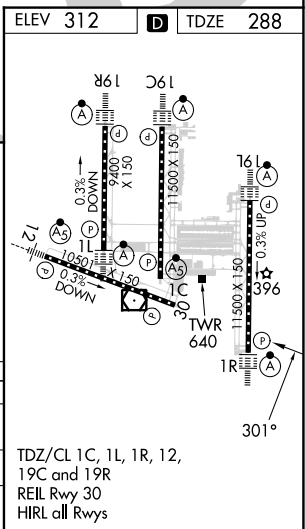
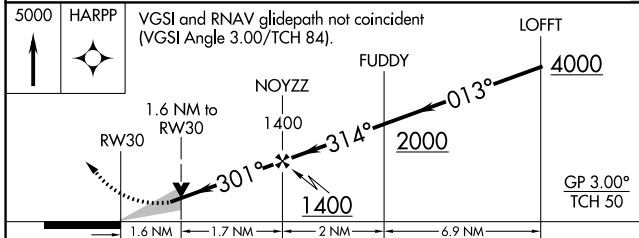
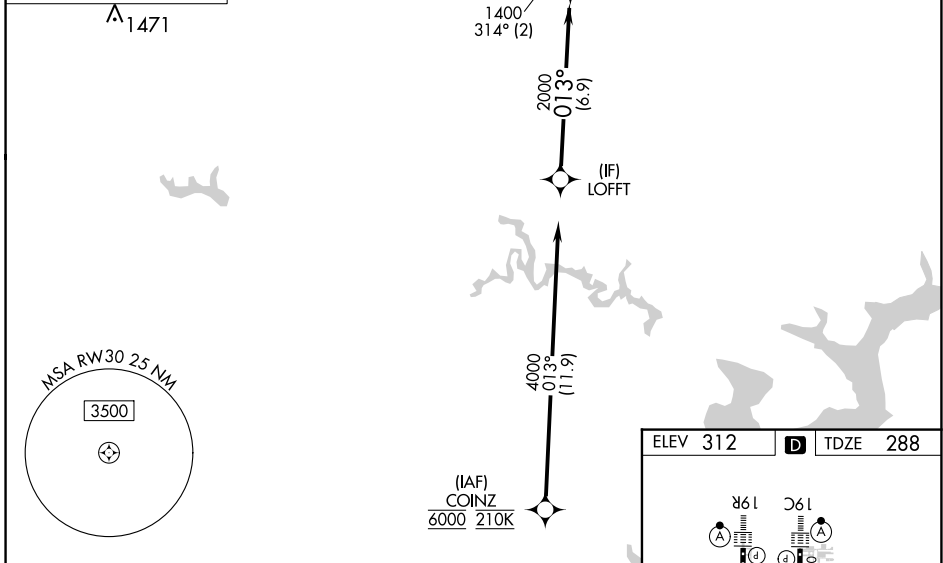
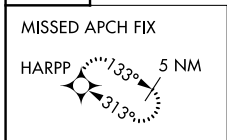
# RNAV (GPS) Y RWY 30

WASHINGTON DULLES INTL (IAD)

RNP APCH - GPS.		MISSED APPROACH: Climb to 5000 direct HARPP and hold.	
<p>▼ For uncompensated Baro-VNAV systems, LNAV/VNAV NA below -13°C or above 54°C.</p>			
POTOMAC APP CON	DULLES TOWER	GND CON	CLNC DEL
<b>120.45 306.925</b> (241°-330°)	<b>120.1 317.8</b> (Rwy 1R/19L)	<b>121.9 317.8</b> (EAST)	<b>135.7 317.8</b>
<b>128.525 306.925</b> (091°-240°)	<b>120.25 348.6</b> (Rwy 1C/19C)	<b>121.625 348.6</b> (WEST)	
<b>126.1 338.25</b> (331°-090°)	<b>134.425 348.6</b> (Rwys 1L/19R and 12/30)		

D-ATIS  
**134.85**

CPDLC



CATEGORY	A		B		C		D
LNAV/VNAV DA	801-1 $\frac{3}{8}$		513 (500-1 $\frac{3}{8}$ )				
LNAV MDA	900/55	612 (600-1)	900-1 $\frac{3}{4}$	612 (600-1 $\frac{3}{4}$ )			
CIRCLING	940-1	628 (700-1)	940-1 $\frac{3}{4}$ 628 (700-1 $\frac{3}{4}$ )	1180-2 $\frac{3}{4}$ 868 (900-2 $\frac{3}{4}$ )			