

WAAS CH 56409 W01A	APP CRS 011°	Rwy ldg 11500 TDZE 312 Apt Elev 312
---------------------------------	------------------------	--

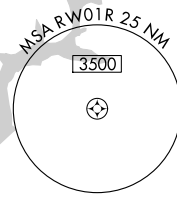
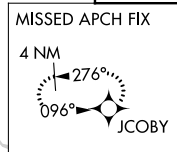
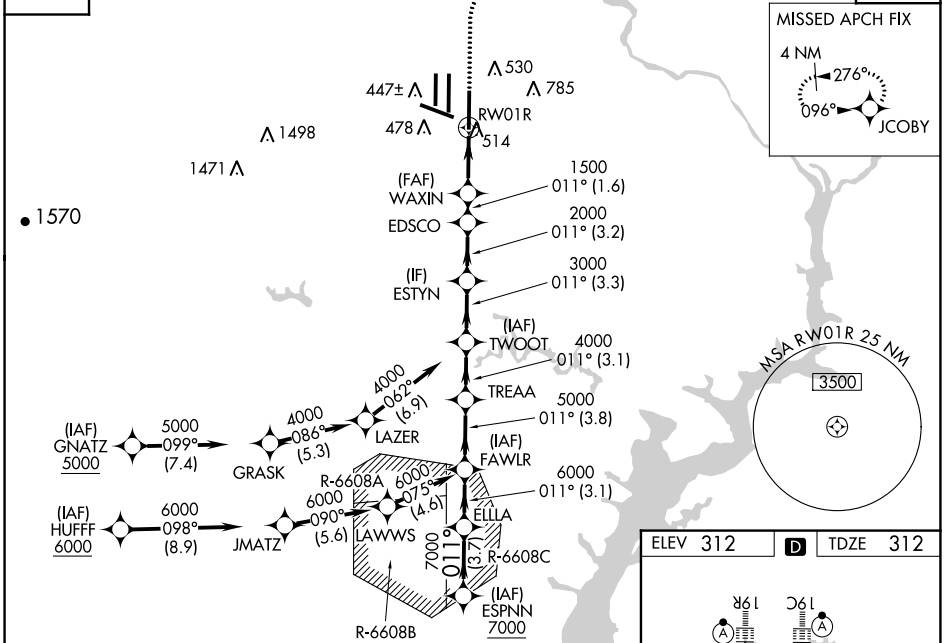
RNAV (GPS) Y RWY 1R

WASHINGTON DULLES INTL (IAD)

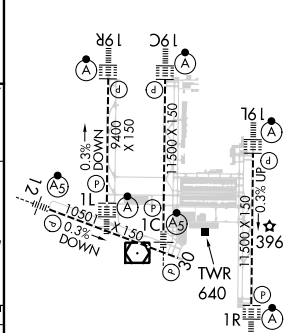
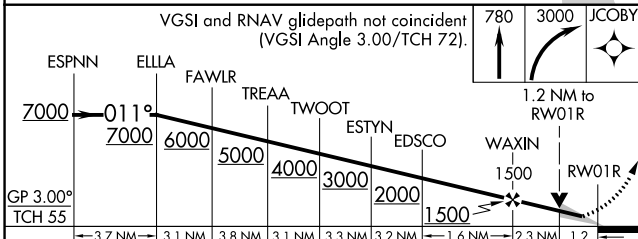
RNP APCH - GPS.	ALSF-2	MISSED APPROACH: Climb to 780, then climbing right turn to 3000 direct JCOBY and hold.
<p>▼ For uncompensated Baro-VNAV systems, LNAV/VNAV NA below -13°C or above 54°C.</p> <p>▲ Simultaneous approach authorized. LNAV procedure NA during simultaneous operations.</p> <p>Use of FD or AP required during simultaneous operations. For inop ALS, increase LNAV/VNAV all Cats visibility to RVR 6000 and LNAV Cat C/D visibility to 1/2 SM.</p>		

POTOMAC APP CON 120.45 306.925 (241°-330°) 128.525 306.925 (091°-240°) 126.1 338.25 (331°-090°)	DULLES TOWER 120.1 317.8 (Rwy 1R/19L) 120.25 348.6 (Rwy 1C/19C) 134.425 348.6 (Rwys 1L/19R and 12/30)	GND CON 121.9 317.8 (EAST) 121.625 348.6 (WEST)	CLNC DEL 135.7 317.8
---	---	---	--------------------------------

D-ATIS 134.85	CPDLC
-------------------------	-------



ELEV 312	D	TDZE 312
----------	---	----------



GP 3.00° TCH 55	3.7 NM	3.1 NM	3.8 NM	3.1 NM	3.3 NM	3.2 NM	1.6 NM	2.3 NM	1.2
CATEGORY	A		B		C		D		
LPV DA	512/18		200 (200-1/2)						
LNAV/VNAV DA	728/40		416 (500-3/4)						
LNAV MDA	780/24		468 (500-1/2)		780/50		468 (500-1)		
CIRCLING	940-1		628 (700-1)		940-1 3/4		1180-2 3/4		
					628 (700-1 3/4)		868 (900-2 3/4)		

TDZ/CL Rwys 1C, 1L, 1R, 12, 19C and 19R
REIL Rwy 30
HIRL all Rwys

NE-3, 31 OCT 2024 to 28 NOV 2024

NE-3, 31 OCT 2024 to 28 NOV 2024