

WAAS CH 99309 W01D	APP CRS 011°	Rwy ldg TDZE 296 Apt Elev 312
--	------------------------	---

RNAV (GPS) Y RWY 1L

WASHINGTON DULLES INTL (IAD)

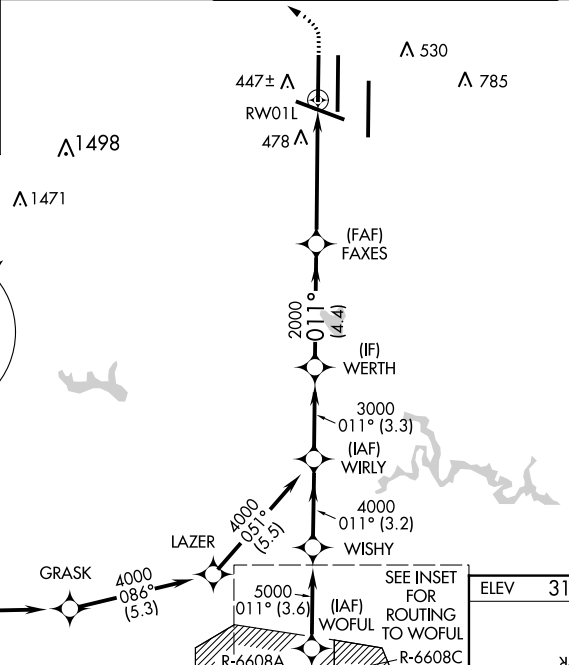
RNP APCH - GPS.

▼ For uncompensated Baro-VNAV systems, LNAV/VNAV NA below -13°C or above 54°C. Use of FD or AP required during simultaneous operations. LNAV procedure NA during simultaneous operations. Simultaneous approach authorized. For inop ALS, increase LNAV/VNAV all Cats visibility to RVR 5500. Increase LNAV Cat C/D visibility to 1 3/8 SM.

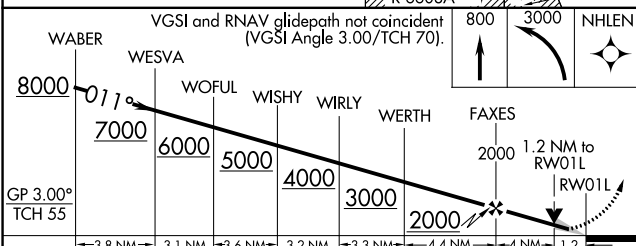
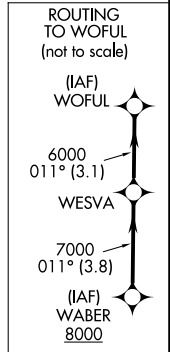
ALSF-2


MISSED APPROACH: Climb to 800 then climbing left turn to 3000 direct NHLEN and hold.

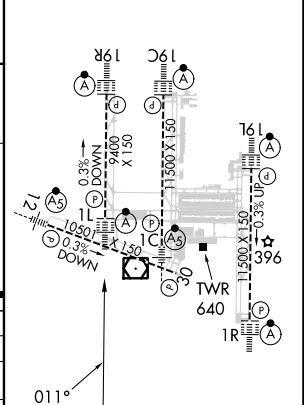
D-ATIS 134.85	POTOMAC APP CON 120.45 306.925 (241°-330°) 128.525 306.925 (091°-240°) 126.1 338.25 (331°-090°)	DULLES TOWER 120.1 317.8 (Rwy 1R/19L) 120.25 348.6 (Rwy 1C/19C) 134.425 348.6 (Rwys 1L/19R and 12/30)	GND CON 121.9 317.8 (EAST) 121.625 348.6 (WEST)
-------------------------	---	---	---



CLNC DEL 135.7 317.8	CPDLC
--------------------------------	-------



ELEV 312	D	TDZE 296
----------	----------	----------



WABER	8000	011°	WESVA	7000	WOFUL	6000	WISHY	5000	WIRLY	4000	WERTH	3000	FAXES	2000	1.2 NM to RWY 1L
GP 3.00° TCH 55															
		-3.8 NM-	3.1 NM	-3.6 NM-	3.2 NM	-3.3 NM-	4.4 NM	-4 NM-	1.2						
CATEGORY		A		B		C		D							
LPV DA				496/18		200 (200-1/2)									
LNAV/VNAV DA				658/35		362 (400-3/8)									
LNAV MDA		760/24	464 (500-1/2)			760/50	464 (500-1)								
CIRCLING		940-1	628 (700-1)			940-1 3/4	628 (700-1 3/4)	1180-2 3/4	868 (900-2 3/4)						

NE-3, 31 OCT 2024 to 28 NOV 2024

NE-3, 31 OCT 2024 to 28 NOV 2024

TDZ/CL Rwys 1C, 1L, 1R, 12, 19C, and 19R
REIL Rwy 30
HIRL all Rwys