

WAAS CH 97509 W01B	APP CRS 011°	Rwy ldg 11500 TDZE 286 Apt Elev 312
--	------------------------	--

RNAV (GPS) Y RWY 1C

WASHINGTON DULLES INTL (IAD)

RNP APCH - GPS.

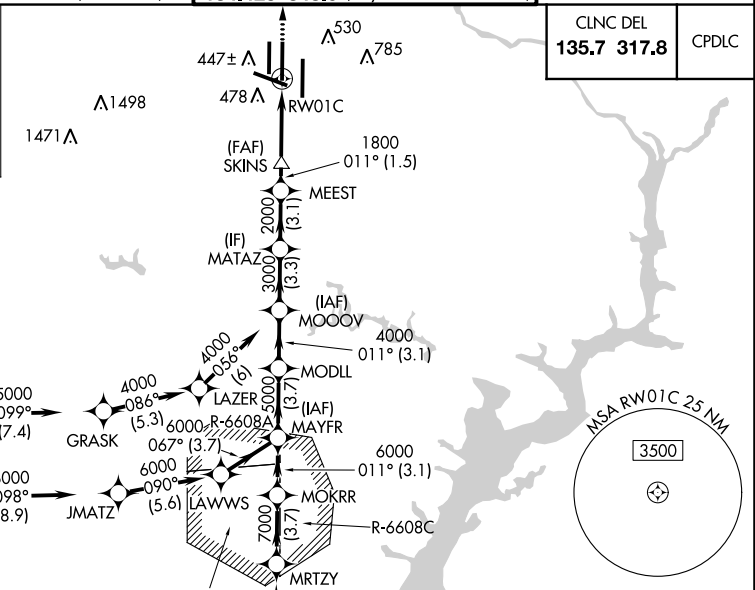
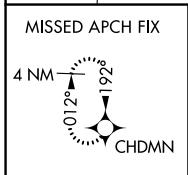
⚠ For uncompensated Baro-VNAV systems, LNAV/VNAV NA below -13°C or above 54°C.
⚠ Use of FD or AP required during simultaneous operations. LNAV procedure NA during simultaneous operations. Simultaneous approach authorized. For inop ALR, increase LNAV/VNAV all Cats visibility to 1 1/2 SM. Increase LNAV Cat C/D visibility to 1 1/4 SM.

MALSR

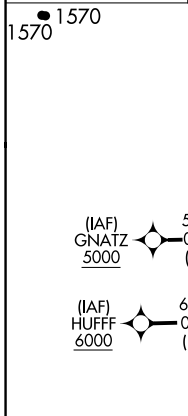


MISSED APPROACH:
Climb to 4000 direct CHDMN and hold, continue climb-in-hold to 4000.

D-ATIS 134.85	POTOMAC APP CON 120.45 306.925 (241°-330°) 128.525 306.925 (091°-240°) 126.1 338.25 (331°-090°)	DULLES TOWER 120.1 317.8 (Rwy 1R/19L) 120.25 348.6 (Rwy 1C/19C) 134.425 348.6 (Rwys 1L/19R and 12/30)	GND CON 121.9 317.8 (EAST) 121.625 348.6 (WEST)
-------------------------	---	---	---

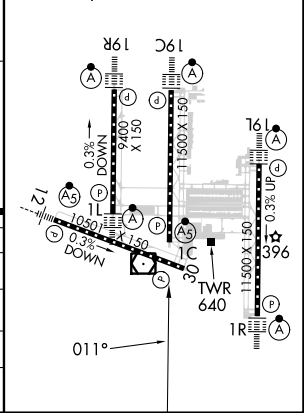
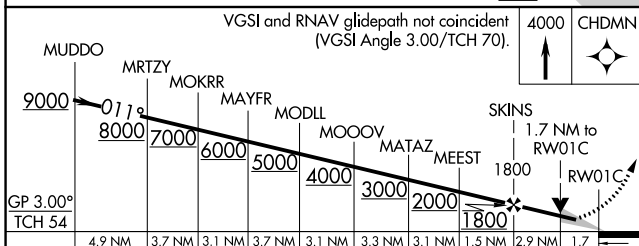


CLNC DEL 135.7 317.8	CPDLC
--------------------------------	-------



ELEV 312	D	TDZE 286
----------	----------	----------

TDZ/CL Rwys 1C, 1L, 1R, 12, 19C, and 19R
 REIL Rwy 30
 HIRL all Rwys



CATEGORY	A	B	C	D
LPV DA	486/18		200 (200-1/2)	
LNAV/VNAV DA	801/55		515 (500-1 1/4)	
LNAV MDA	900/24 614 (600-1/2)		900-1 3/8 614 (600-1 1/8)	
CIRCLING	940-1 628 (700-1)		940-1 3/4 628 (700-1 1/4) 1180-2 3/4 868 (900-2 1/4)	

NE-3, 08 AUG 2024 to 05 SEP 2024

NE-3, 08 AUG 2024 to 05 SEP 2024