

WAAS CH <b>86709</b> <b>W19D</b>	APP CRS <b>191°</b>	Rwy Idg TDZE <b>278</b> Apt Elev <b>312</b>	<b>9400</b>
--	------------------------	---	-------------

# RNAV (GPS) Y RWY 19R

WASHINGTON DULLES INTL (IAD)

RNP APCH - GPS.

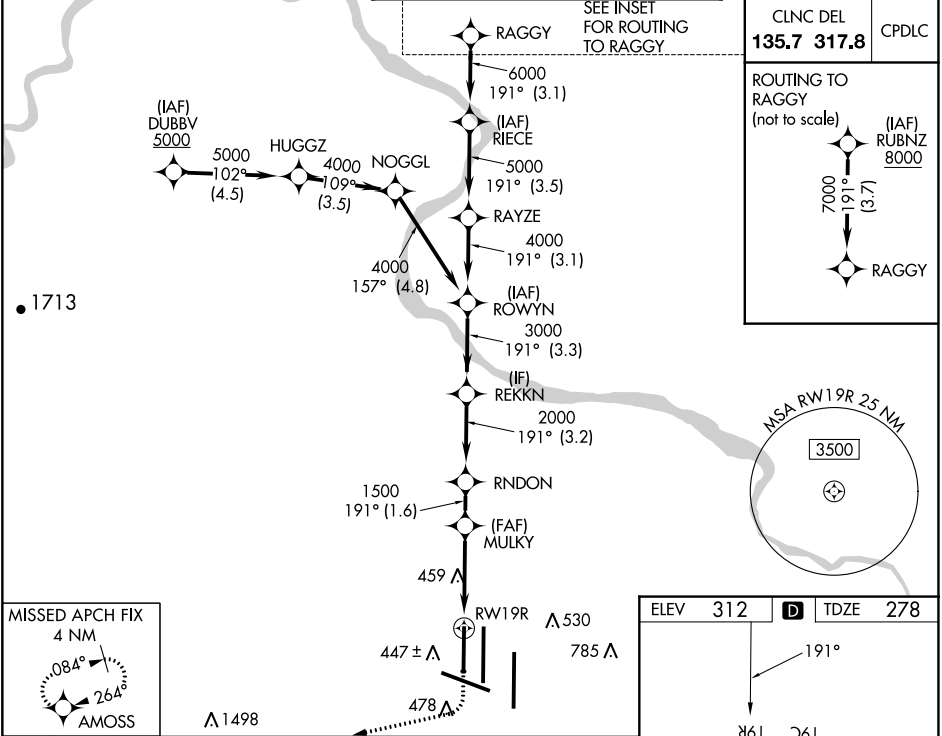
**▼** For uncompensated Baro-VNAV systems, LNAV/VNAV NA below -13°C or above 54°C. Simultaneous approach authorized. LNAV procedure NA during simultaneous operations. Use of FD or AP required during simultaneous operations.

ALSf-2



**MISSED APPROACH:** Climb to 800 then climbing right turn to 3000 direct AMOSS and hold.

D-ATIS <b>134.85</b>	POTOMAC APP CON	DULLES TOWER	GND CON
	<b>120.45 306.925</b> (241°-330°)	<b>120.1 317.8</b> (Rwy 1R/19L)	<b>121.9 317.8</b> (EAST)
	<b>128.525 306.925</b> (091°-240°)	<b>120.25 348.6</b> (Rwy 1C/19C)	<b>121.625 348.6</b> (WEST)
	<b>126.1 338.25</b> (331°-090°)	<b>134.425 348.6</b> (Rwy 1L/19R and 12/30)	



NE-3, 08 AUG 2024 to 05 SEP 2024

NE-3, 08 AUG 2024 to 05 SEP 2024

800	3000	AMOSS	VGSI and RNAV glidepath not coincident (VGSI Angle 3.00°/TCH 70°).	RUBNZ	8000
-----	------	-------	--	-------	------

	MULKY	RNDON	REKKN	ROWYN	RAYZE	RIECE	RAGGY
1.2	2.5	1.6	3.2	3.3	3.1	3.5	3.1
1.2	2.5	1.6	3.2	3.3	3.1	3.5	3.1

CATEGORY	A	B	C	D
LPV DA		478/18	200 (200-1/2)	
LNAV/VNAV DA		708/40	430 (400-3/4)	
LNAV MDA	720/24	442 (500-1/2)	720/45	442 (500-7/8)
CIRCLING	940-1	628 (700-1)	940-1 3/4 628 (700-1 3/4)	1180-2 3/4 868 (900-2 3/4)

